


# Anti-Density Regulated Protein antibody ab108221

[1 References](#) [画像数 1](#)

### 製品の概要

---

製品名	Anti-Density Regulated Protein antibody
製品の詳細	Rabbit polyclonal to Density Regulated Protein
由来種	Rabbit
アプリケーション	<b>適用あり:</b> WB
種交差性	<b>交差種:</b> Mouse, Human <b>交差が予測される動物種:</b> Rat, Rabbit, Goat, Horse, Chicken, Guinea pig, Cow, Dog, Turkey, Pig, Xenopus laevis, Chimpanzee, Rhesus monkey, Gorilla, Rainbow trout, Orangutan, Xenopus tropicalis 
免疫原	Synthetic peptide corresponding to a region between amino acids 148 - 198 of Human Density Regulated Protein (NP_003668.2).
ポジティブ・コントロール	HeLa, 293T or NIH 3T3 whole cell lysate.
特記事項	<p>The Life Science industry has been in the grips of a reproducibility crisis for a number of years. Abcam is leading the way in addressing this with our range of recombinant monoclonal antibodies and knockout edited cell lines for gold-standard validation. Please check that this product meets your needs before purchasing.</p> <p>If you have any questions, special requirements or concerns, please send us an inquiry and/or contact our Support team ahead of purchase. Recommended alternatives for this product can be found below, along with publications, customer reviews and Q&amp;As</p>

### 製品の特性

---

製品の状態	Liquid
保存方法	Shipped at 4°C. Upon delivery aliquot and store at -20°C. Avoid freeze / thaw cycles.
バッファー	pH: 7 Preservative: 0.09% Sodium azide Constituent: Tris citrate/phosphate
精製度	Immunogen affinity purified
ポリ/モノ	ポリクローナル
アイソタイプ	IgG

## アプリケーション

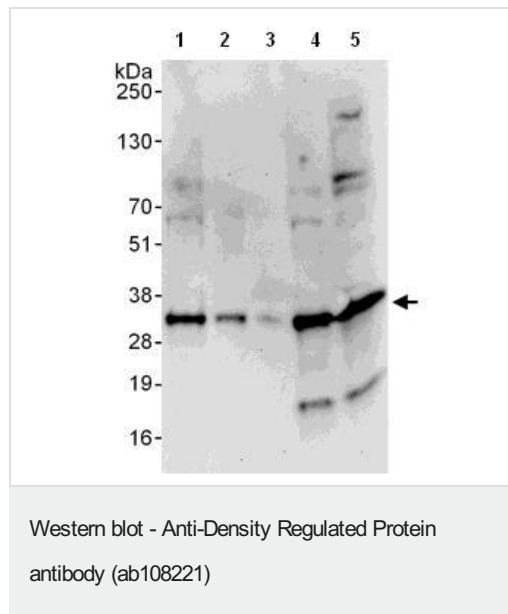
**The Abpromise guarantee** Abpromise保証は、次のテスト済みアプリケーションにおけるab108221の使用に適用されます  
アプリケーションノートには、推奨の開始希釈率がありますが、適切な希釈率につきましてはご検討ください。

アプリケーション	Abreviews	特記事項
WB		1/2000 - 1/10000. Predicted molecular weight: 22 kDa.

## ターゲット情報

<b>機能</b>	May be involved in the translation of target mRNAs by scanning and recognition of the initiation codon. Plays a role in the modulation of the translational profile of a subset of cancer-related mRNAs when recruited to the translational initiation complex by the oncogene MCTS1.
<b>組織特異性</b>	Highly expressed in heart and skeletal muscle and moderately expressed in the brain, placenta, liver and pancreas. Weakly expressed in the lung and kidney.
<b>配列類似性</b>	Belongs to the DENR family. Contains 1 SU1 domain.

## 画像



**All lanes** : Anti-Density Regulated Protein antibody (ab108221) at 0.1 µg/ml

**Lane 1** : HeLa whole cell lysate at 50 µg

**Lane 2** : HeLa whole cell lysate at 15 µg

**Lane 3** : HeLa whole cell lysate at 5 µg

**Lane 4** : 293T whole cell lysate at 50 µg

**Lane 5** : NIH 3T3 whole cell lysate at 50 µg

Developed using the ECL technique.

**Predicted band size:** 22 kDa

**Exposure time:** 30 seconds

**Please note:** All products are "FOR RESEARCH USE ONLY. NOT FOR USE IN DIAGNOSTIC PROCEDURES"

## Our Abpromise to you: Quality guaranteed and expert technical support

- Replacement or refund for products not performing as stated on the datasheet
- Valid for 12 months from date of delivery
- Response to your inquiry within 24 hours

- We provide support in Chinese, English, French, German, Japanese and Spanish
- Extensive multi-media technical resources to help you
- We investigate all quality concerns to ensure our products perform to the highest standards

If the product does not perform as described on this datasheet, we will offer a refund or replacement. For full details of the Abpromise, please visit <https://www.abcam.co.jp/abpromise> or contact our technical team.

### **Terms and conditions**

---

- Guarantee only valid for products bought direct from Abcam or one of our authorized distributors