


Anti-delta Sarcoglycan antibody ab115019

画像数 1

製品の概要

製品名	Anti-delta Sarcoglycan antibody
製品の詳細	Goat polyclonal to delta Sarcoglycan
由来種	Goat
アプリケーション	適用あり: IHC-P, WB
種交差性	交差種: Human 交差が予測される動物種: Mouse, Cow, Dog, Pig 
免疫原	Synthetic peptide: C-RLPHGSYPTGTR , corresponding to internal sequence amino acids 245-257 of Human delta Sarcoglycan(NP_000328.2; NP_758447.1; NP_001121681.1). Run BLAST with Run BLAST with
ポジティブ・コントロール	Human and Rat heart lysates
特記事項	<p>The Life Science industry has been in the grips of a reproducibility crisis for a number of years. Abcam is leading the way in addressing this with our range of recombinant monoclonal antibodies and knockout edited cell lines for gold-standard validation. Please check that this product meets your needs before purchasing.</p> <p>If you have any questions, special requirements or concerns, please send us an inquiry and/or contact our Support team ahead of purchase. Recommended alternatives for this product can be found below, along with publications, customer reviews and Q&As</p>

製品の特性

製品の状態	Liquid
保存方法	Shipped at 4°C. Upon delivery aliquot. Store at -20°C or -80°C. Avoid freeze / thaw cycle.
バッファー	pH: 7.30 Preservative: 0.02% Sodium azide Constituents: 99% Tris buffered saline, 0.5% BSA
精製度	Immunogen affinity purified
特記事項 (精製)	ab115019 was purified from goat serum by ammonium sulphate precipitation followed by antigen affinity chromatography using the immunizing peptide.
ポリ/モノ	ポリクローナル

アプリケーション

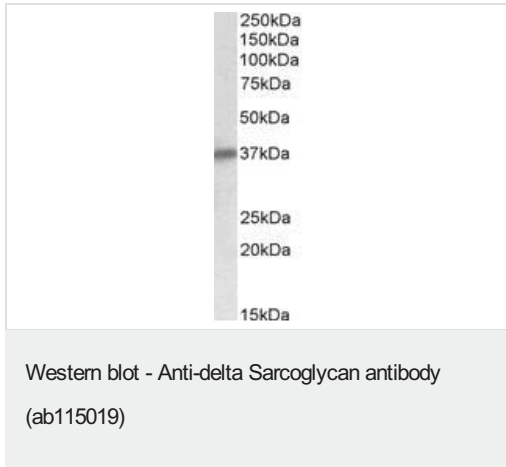
The Abpromise guarantee **Abpromise保証は、次のテスト済みアプリケーションにおけるab115019の使用に適用されます**
アプリケーションノートには、推奨の開始希釈率がありますが、適切な希釈率につきましてはご確認ください。

アプリケーション	Abreviews	特記事項
IHC-P		Use a concentration of 3 - 5 µg/ml. Perform heat mediated antigen retrieval with citrate buffer pH 6 before commencing with IHC staining protocol.
WB		Use a concentration of 0.1 - 0.3 µg/ml. Detects a band of approximately 37 kDa (predicted molecular weight: 32 kDa). 1 hour primary incubation is recommended for this product.

ターゲット情報

機能	Component of the sarcoglycan complex, a subcomplex of the dystrophin-glycoprotein complex which forms a link between the F-actin cytoskeleton and the extracellular matrix.
組織特異性	Most strongly expressed in skeletal and cardiac muscle. Also detected in smooth muscle. Weak expression in brain and lung.
関連疾患	Defects in SGCD are the cause of limb-girdle muscular dystrophy type 2F (LGMD2F) [MIM:601287]. LGMD2F is an autosomal recessive disorder. Defects in SGCD are the cause of cardiomyopathy dilated type 1L (CMD1L) [MIM:606685]. Dilated cardiomyopathy is a disorder characterized by ventricular dilation and impaired systolic function, resulting in congestive heart failure and arrhythmia. Patients are at risk of premature death.
配列類似性	Belongs to the sarcoglycan beta/delta/gamma/zeta family.
翻訳後修飾	Glycosylated. Disulfide bonds are present.
細胞内局在	Cell membrane > sarcolemma. Cytoplasm > cytoskeleton.

画像



Anti-delta Sarcoglycan antibody (ab115019) at 0.1 µg/ml + Human heart lysate (in RIPA buffer) at 35 µg

Developed using the ECL technique.

Predicted band size: 32 kDa

Observed band size: 37 kDa

Exposure time: 1 hour

Please note: All products are "FOR RESEARCH USE ONLY. NOT FOR USE IN DIAGNOSTIC PROCEDURES"

Our Abpromise to you: Quality guaranteed and expert technical support

- Replacement or refund for products not performing as stated on the datasheet
- Valid for 12 months from date of delivery
- Response to your inquiry within 24 hours
- We provide support in Chinese, English, French, German, Japanese and Spanish
- Extensive multi-media technical resources to help you
- We investigate all quality concerns to ensure our products perform to the highest standards

If the product does not perform as described on this datasheet, we will offer a refund or replacement. For full details of the Abpromise, please visit <https://www.abcam.co.jp/abpromise> or contact our technical team.

Terms and conditions

- Guarantee only valid for products bought direct from Abcam or one of our authorized distributors