

Anti-delta 1 Catenin/CAS (phospho S268) antibody [EPR2380] ab79545

リコンビナント **RabMAb**

1 References [画像数 4](#)

製品の概要

製品名	Anti-delta 1 Catenin/CAS (phospho S268) antibody [EPR2380]
製品の詳細	Rabbit monoclonal [EPR2380] to delta 1 Catenin/CAS (phospho S268)
由来種	Rabbit
アプリケーション	適用あり: WB, IHC-P, ICC/IF 適用なし: Flow Cyt or IP
種交差性	交差種: Human
免疫原	Synthetic peptide corresponding to Human delta 1 Catenin/CAS (phospho S268).
ポジティブ・コントロール	HeLa cell lysate treated with Calyculin A. A431 cells. Human breast carcinoma tissue.
特記事項	<p>This product is a recombinant monoclonal antibody, which offers several advantages including:</p> <ul style="list-style-type: none"> - High batch-to-batch consistency and reproducibility - Improved sensitivity and specificity - Long-term security of supply - Animal-free production <p>For more information see here.</p> <p>Our RabMAb[®] technology is a patented hybridoma-based technology for making rabbit monoclonal antibodies. For details on our patents, please refer to RabMAb[®] patents.</p> <p>Mouse, Rat: We have preliminary internal testing data to indicate this antibody may not react with these species. Please contact us for more information.</p>

製品の特性

製品の状態	Liquid
保存方法	Shipped at 4°C. Store at -20°C. Stable for 12 months at -20°C.
バッファー	<p>pH: 7.20</p> <p>Preservative: 0.05% Sodium azide</p> <p>Constituents: 0.1% BSA, 40% Glycerol (glycerin, glycerine), 9.85% Tris glycine, 50% Tissue culture supernatant</p>
精製度	Protein A purified

ポリ/モノ	モノクローナル
クローン名	EPR2380
アイソタイプ	IgG

アプリケーション

The Abpromise guarantee **Abpromise保証は、** 次のテスト済みアプリケーションにおけるab79545の使用に適用されます
アプリケーションノートには、推奨の開始希釈率がありますが、適切な希釈率につきましてはご検討ください。

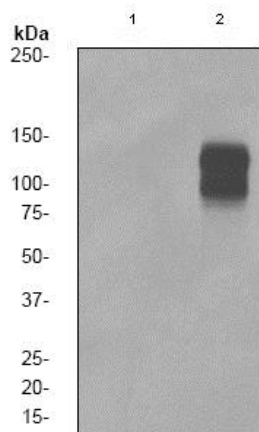
アプリケーション	Abreviews	特記事項
WB		1/2500 - 1/5000. Detects a band of approximately 90-120 kDa (predicted molecular weight: 108 kDa).
IHC-P		1/100 - 1/250. Perform heat mediated antigen retrieval before commencing with IHC staining protocol.
ICC/IF		1/100 - 1/250.

追加情報 Is unsuitable for Flow Cyt or IP.

ターゲット情報

機能	Binds to and inhibits the transcriptional repressor ZBTB33, which may lead to activation of target genes of the Wnt signaling pathway (By similarity). May associate with and regulate the cell adhesion properties of both C- and E-cadherins. Implicated both in cell transformation by SRC and in ligand-induced receptor signaling through the EGF, PDGF, CSF-1 and ERBB2 receptors. Promotes GLIS2 C-terminal cleavage.
組織特異性	Expressed in vascular endothelium.
配列類似性	Belongs to the beta-catenin family. Contains 10 ARM repeats.
ドメイン	A possible nuclear localization signal exists in all isoforms where Asp-626--631-Arg are deleted.
翻訳後修飾	Phosphorylated by protein-tyrosine kinases. Dephosphorylated by PTPRJ.
細胞内局在	Cytoplasm. Nucleus. Cell membrane. Interaction with GLIS2 promotes nuclear translocation (By similarity). NANOS1 induces its translocation from sites of cell-cell contact to the cytoplasm.

画像



Western blot - Anti-delta 1 Catenin/CAS (phospho S268) antibody [EPR2380] (ab79545)

All lanes : Anti-delta 1 Catenin/CAS (phospho S268) antibody [EPR2380] (ab79545) at 1/5000 dilution

Lane 1 : HeLa cell lysate

Lane 2 : HeLa cell lysate treated with Calyculin A

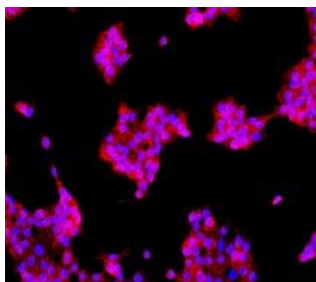
Lysates/proteins at 10 µg per lane.

Secondary

All lanes : HRP labelled goat anti-rabbit at 1/2000 dilution

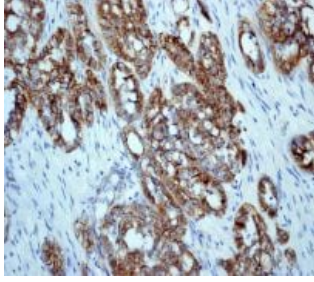
Predicted band size: 108 kDa

Observed band size: 90-120 kDa



Immunocytochemistry/ Immunofluorescence - Anti-delta 1 Catenin/CAS (phospho S268) antibody [EPR2380] (ab79545)

Immunofluorescent staining of delta 1 Catenin/CAS in A431 cells using ab79545 at 1/100 dilution.



Immunohistochemistry (Formalin/PFA-fixed paraffin-embedded sections) - Anti-delta 1 Catenin/CAS (phospho S268) antibody [EPR2380] (ab79545)

ab79545 at 1/100 dilution staining delta 1 Catenin/CAS in paraffin-embedded human breast carcinoma tissue by Immunohistochemistry.

Perform heat mediated antigen retrieval before commencing with IHC staining protocol.

Why choose a recombinant antibody?



Anti-delta 1 Catenin/CAS (phospho S268) antibody [EPR2380] (ab79545)

Please note: All products are "FOR RESEARCH USE ONLY. NOT FOR USE IN DIAGNOSTIC PROCEDURES"

Our Abpromise to you: Quality guaranteed and expert technical support

- Replacement or refund for products not performing as stated on the datasheet
- Valid for 12 months from date of delivery
- Response to your inquiry within 24 hours
- We provide support in Chinese, English, French, German, Japanese and Spanish
- Extensive multi-media technical resources to help you
- We investigate all quality concerns to ensure our products perform to the highest standards

If the product does not perform as described on this datasheet, we will offer a refund or replacement. For full details of the Abpromise, please visit <https://www.abcam.co.jp/abpromise> or contact our technical team.

Terms and conditions

- Guarantee only valid for products bought direct from Abcam or one of our authorized distributors