

Anti-DEGA antibody ab84416

★★★★★ 2 Abreviews 1 References 画像数 1

医薬用外毒物

製品の概要

製品名	Anti-DEGA antibody
製品の詳細	Rabbit polyclonal to DEGA
由来種	Rabbit
アプリケーション	適用あり: IHC-P
種交差性	交差種: Human
免疫原	Synthetic peptide corresponding to Human DEGA (C terminal). Database link: NM_181847
特記事項	<p>The Life Science industry has been in the grips of a reproducibility crisis for a number of years. Abcam is leading the way in addressing this with our range of recombinant monoclonal antibodies and knockout edited cell lines for gold-standard validation. Please check that this product meets your needs before purchasing.</p> <p>If you have any questions, special requirements or concerns, please send us an inquiry and/or contact our Support team ahead of purchase. Recommended alternatives for this product can be found below, along with publications, customer reviews and Q&As</p>

製品の特性

製品の状態	Lyophilized:Reconstitute in 200ul sterile H ₂ O.
保存方法	Shipped at 4°C. Upon delivery aliquot and store at -20°C. Avoid repeated freeze / thaw cycles.
バッファー	Preservative: 0.02% Sodium azide Constituent: 2% BSA
精製度	Immunogen affinity purified
特記事項(精製)	ab84416 is by a peptide affinity column.
ポリ/モノ	ポリクローナル
アイソタイプ	IgG

アプリケーション

The Abpromise guarantee

Abpromise保証は、 次のテスト済みアプリケーションにおけるab84416の使用に適用されます

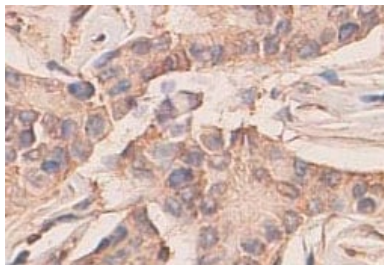
アプリケーションノートには、推奨の開始希釈率がありますが、適切な希釈率につきましてはご確認ください。

アプリケーション	Abreviews	特記事項
IHC-P		1/100 - 1/500.

ターゲット情報

機能	Required for depolarization-dependent survival of cultured cerebellar granule neurons. May mediate homophilic as well as heterophilic cell-cell interaction with AMIGO1 or AMIGO3. May contribute to signal transduction through its intracellular domain. May be required for tumorigenesis of a subset of gastric adenocarcinomas.
組織特異性	Highest levels in breast, ovary, cervix, and uterus. Lower levels in lung, colon, and rectum. Differentially expressed in 56% of thyroid, 57% of pancreatic and 45% of stomach cancers.
配列類似性	Belongs to the immunoglobulin superfamily. AMIGO family. Contains 1 Ig-like C2-type (immunoglobulin-like) domain. Contains 6 LRR (leucine-rich) repeats. Contains 1 LRRCT domain. Contains 1 LRRNT domain.
細胞内局在	Cell membrane. Nucleus. Associated with nucleus as well as plasma membrane. Restricted to somata of cerebellar as well as hippocampal neurons.

画像



ab84416 at 1/100 dilution staining DEGA in human breast carcinoma by Immunohistochemistry, Formalin-fixed, Paraffin-embedded tissue.

Immunohistochemistry (Formalin/PFA-fixed paraffin-embedded sections) - Anti-DEGA antibody (ab84416)

Please note: All products are "FOR RESEARCH USE ONLY. NOT FOR USE IN DIAGNOSTIC PROCEDURES"

Our Abpromise to you: Quality guaranteed and expert technical support

- Replacement or refund for products not performing as stated on the datasheet
- Valid for 12 months from date of delivery
- Response to your inquiry within 24 hours
- We provide support in Chinese, English, French, German, Japanese and Spanish
- Extensive multi-media technical resources to help you

- We investigate all quality concerns to ensure our products perform to the highest standards

If the product does not perform as described on this datasheet, we will offer a refund or replacement. For full details of the Abpromise, please visit <https://www.abcam.co.jp/abpromise> or contact our technical team.

Terms and conditions

- Guarantee only valid for products bought direct from Abcam or one of our authorized distributors