


Anti-DECR1 antibody ab95965

画像検索

医薬用外劇物

製品の概要

| | |
|--------------|---|
| 製品名 | Anti-DECR1 antibody |
| 製品の詳細 | Rabbit polyclonal to DECR1 |
| 由来種 | Rabbit |
| アプリケーション | 適用あり: WB, ICC/IF |
| 種交差性 | 交差種: Human 交差が予測される動物種: Cow  |
| 免疫原 | Recombinant fragment, corresponding to a region within amino acids 1-305 of Human DECR1 (NP_001350). |
| ポジティブ・コントロール | 293T, A431, H1299, HeLa, MOLT4 and Raji cell lysates. HepG2 whole cell lysate (ab7900). HeLa cells. |
| 特記事項 | <p>The Life Science industry has been in the grips of a reproducibility crisis for a number of years. Abcam is leading the way in addressing this with our range of recombinant monoclonal antibodies and knockout edited cell lines for gold-standard validation. Please check that this product meets your needs before purchasing.</p> <p>If you have any questions, special requirements or concerns, please send us an inquiry and/or contact our Support team ahead of purchase. Recommended alternatives for this product can be found below, along with publications, customer reviews and Q&As</p> |

製品の特性

| | |
|--------|---|
| 製品の状態 | Liquid |
| 保存方法 | Shipped at 4°C. Upon delivery aliquot. Store at -20°C or -80°C. Avoid freeze / thaw cycle. |
| バッファー | pH: 7.00 Preservative: 0.01% Thimerosal (merthiolate) Constituents: 1.21% Tris, 0.75% Glycine, 10% Glycerol (glycerin, glycerine) |
| 精製度 | Immunogen affinity purified |
| ポリ/モノ | ポリクローナル |
| アイソタイプ | IgG |

アプリケーション

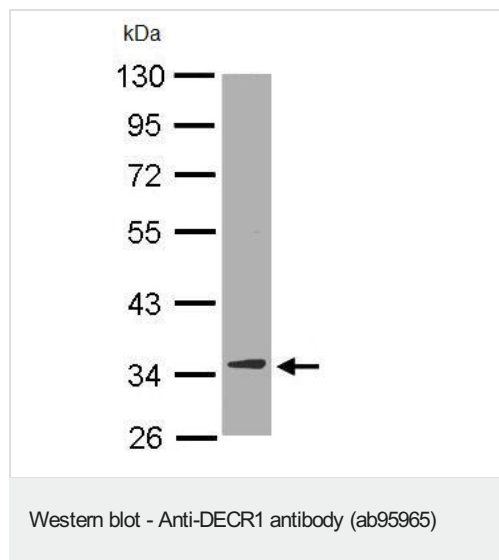
The Abpromise guarantee Abpromise保証は、次のテスト済みアプリケーションにおけるab95965の使用に適用されます
アプリケーションノートには、推奨の開始希釈率がありますが、適切な希釈率につきましてはご検討ください。

| アプリケーション | Abreviews | 特記事項 |
|----------|-----------|---|
| WB | | 1/500 - 1/3000. Predicted molecular weight: 36 kDa. |
| ICC/IF | | 1/100 - 1/200. |

ターゲット情報

| | |
|-------|---|
| 機能 | Auxiliary enzyme of beta-oxidation. It participates in the metabolism of unsaturated fatty enoyl-CoA esters having double bonds in both even- and odd-numbered positions. Catalyzes the NADP-dependent reduction of 2,4-dienoyl-CoA to yield trans-3-enoyl-CoA. |
| 組織特異性 | Heart = liver = pancreas > kidney >> skeletal muscle = lung. |
| 配列類似性 | Belongs to the short-chain dehydrogenases/reductases (SDR) family. 2,4-dienoyl-CoA reductase subfamily. |
| 細胞内局在 | Mitochondrion. |

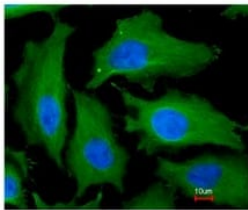
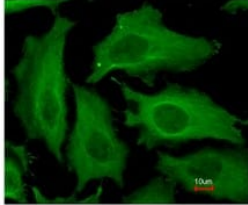
画像



Anti-DECR1 antibody (ab95965) at 1/10000 dilution + HepG2 whole cell lysate at 30 µg

Predicted band size: 36 kDa

10% SDS PAGE



ab95965 at 1/200 dilution staining DEC1 in paraformaldehyde-fixed HeLa cells by immunofluorescence. ab95965 was merged with a DNA probe in the lower image.

Immunocytochemistry/ Immunofluorescence - Anti-DEC1 antibody (ab95965)

Please note: All products are "FOR RESEARCH USE ONLY. NOT FOR USE IN DIAGNOSTIC PROCEDURES"

Our Abpromise to you: Quality guaranteed and expert technical support

- Replacement or refund for products not performing as stated on the datasheet
- Valid for 12 months from date of delivery
- Response to your inquiry within 24 hours
- We provide support in Chinese, English, French, German, Japanese and Spanish
- Extensive multi-media technical resources to help you
- We investigate all quality concerns to ensure our products perform to the highest standards

If the product does not perform as described on this datasheet, we will offer a refund or replacement. For full details of the Abpromise, please visit <https://www.abcam.co.jp/abpromise> or contact our technical team.

Terms and conditions

- Guarantee only valid for products bought direct from Abcam or one of our authorized distributors