

Anti-DECR1 antibody [8B1AD10] ab110287

画像数 4

製品の概要

製品名	Anti-DECR1 antibody [8B1AD10]
製品の詳細	Mouse monoclonal [8B1AD10] to DECR1
由来種	Mouse
アプリケーション	適用あり: IP, ICC/IF, IHC-P, Flow Cyt
種交差性	交差種: Human
免疫原	Tissue, cells or virus. This information is considered to be commercially sensitive.
ポジティブ・コントロール	MRC5 fibroblasts; Human cerebellum tissue; Human liver mitochondria; HeLa cells.
特記事項	<p>This antibody clone is manufactured by Abcam. If you require a custom buffer formulation or conjugation for your experiments, please contact orders@abcam.com.</p> <p>The Life Science industry has been in the grips of a reproducibility crisis for a number of years. Abcam is leading the way in addressing this with our range of recombinant monoclonal antibodies and knockout edited cell lines for gold-standard validation. Please check that this product meets your needs before purchasing.</p> <p>If you have any questions, special requirements or concerns, please send us an inquiry and/or contact our Support team ahead of purchase. Recommended alternatives for this product can be found below, along with publications, customer reviews and Q&As</p> <p>Product was previously marketed under the MitoSciences sub-brand.</p>

製品の特性

製品の状態	Liquid
保存方法	Shipped at 4°C. Store at +4°C. Do Not Freeze.
バッファー	pH: 7.5 Preservative: 0.02% Sodium azide Constituent: HEPES buffered saline
精製度	Ammonium Sulphate Precipitation
特記事項(精製)	Purity near homogeneity as judge by SDS-PAGE. The antibody was produced in-vitro using hybridomas grown in serum-free medium and then purified by biochemical fractionation.
ポリ/モノ	モノクローナル

クローン名	8B1AD10
アイソタイプ	IgG1
軽鎖の種類	kappa

アプリケーション

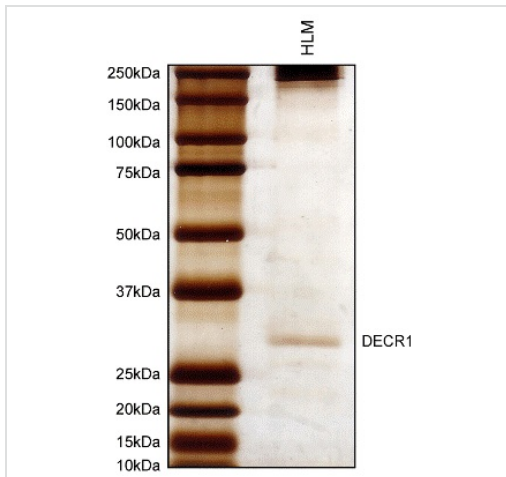
The Abpromise guarantee **Abpromise保証は、次のテスト済みアプリケーションにおけるab110287の使用に適用されず**
 アプリケーションノートには、推奨の開始希釈率がありますが、適切な希釈率につきましてはご検討ください。

アプリケーション	Abreviews	特記事項
IP		Use at an assay dependent concentration. This antibody will only immunoprecipitate DECR1 from isolated mitochondria.
ICC/IF		Use a concentration of 1 µg/ml.
IHC-P		Use at an assay dependent concentration. Perform heat mediated antigen retrieval - 1 min pressure cook in 1mmol EDTA pH8.
Flow Cyt		Use a concentration of 1 µg/ml. ab170190 - Mouse monoclonal IgG1, is suitable for use as an isotype control with this antibody.

ターゲット情報

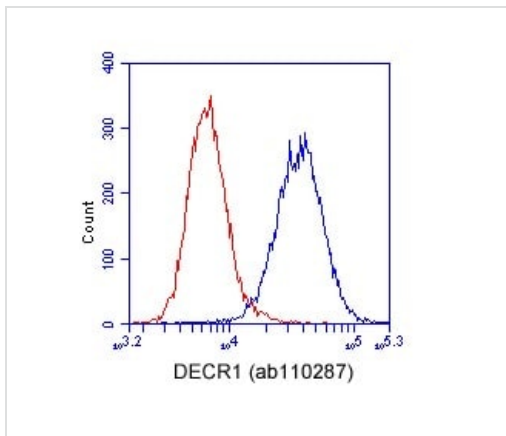
機能	Auxiliary enzyme of beta-oxidation. It participates in the metabolism of unsaturated fatty enoyl-CoA esters having double bonds in both even- and odd-numbered positions. Catalyzes the NADP-dependent reduction of 2,4-dienoyl-CoA to yield trans-3-enoyl-CoA.
組織特異性	Heart = liver = pancreas > kidney >> skeletal muscle = lung.
配列類似性	Belongs to the short-chain dehydrogenases/reductases (SDR) family. 2,4-dienoyl-CoA reductase subfamily.
細胞内局在	Mitochondrion.

画像



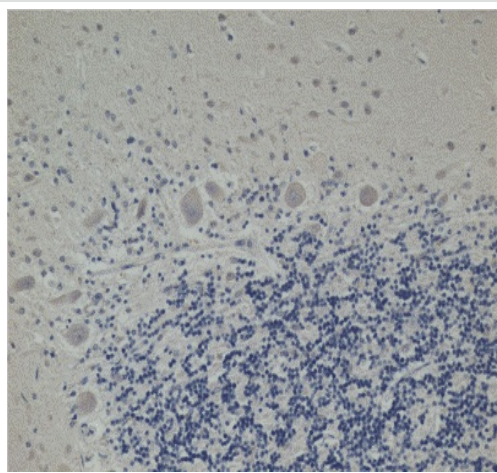
Immunoprecipitation - Anti-DEC1 antibody [8B1AD10] (ab110287)

DEC1 immunocaptured from human liver mitochondria using ab110287.



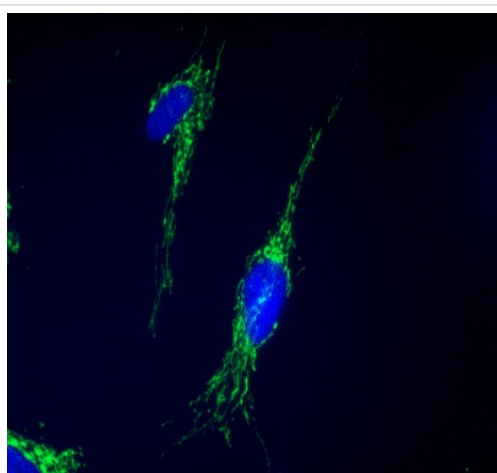
Flow Cytometry - Anti-DEC1 antibody [8B1AD10] (ab110287)

HeLa cells were stained with 1 µg/mL ab110287 (blue) or an equal amount of an isotype control antibody (red) and analyzed by flow cytometry.



ab110287 staining DEC1 in formalin-fixed, paraffin-embedded Human cerebellum tissue by Immunohistochemistry. DEC1 immunoactivity is most intense in neuronal cell bodies, most notably in the large Purkinje cells.

Immunohistochemistry (Formalin/PFA-fixed paraffin-embedded sections) - Anti-DEC1 antibody [8B1AD10] (ab110287)



MRC5 fibroblasts labeled with 1 µg/ml ab110287 and detected with goat anti-mouse secondary conjugated to FITC.

Immunocytochemistry/ Immunofluorescence - Anti-DEC1 antibody [8B1AD10] (ab110287)

Please note: All products are "FOR RESEARCH USE ONLY. NOT FOR USE IN DIAGNOSTIC PROCEDURES"

Our Promise to you: Quality guaranteed and expert technical support

- Replacement or refund for products not performing as stated on the datasheet
- Valid for 12 months from date of delivery

- Response to your inquiry within 24 hours
- We provide support in Chinese, English, French, German, Japanese and Spanish
- Extensive multi-media technical resources to help you
- We investigate all quality concerns to ensure our products perform to the highest standards

If the product does not perform as described on this datasheet, we will offer a refund or replacement. For full details of the Abpromise, please visit <https://www.abcam.co.jp/abpromise> or contact our technical team.

Terms and conditions

- Guarantee only valid for products bought direct from Abcam or one of our authorized distributors