


Anti-DDX4 / MVH antibody [mAbcam27591] ab27591

★★★★★ [7 Abreviews](#) [83 References](#) [画像数 6](#)

製品の概要

製品名	Anti-DDX4 / MVH antibody [mAbcam27591]
製品の詳細	Mouse monoclonal [mAbcam27591] to DDX4 / MVH
由来種	Mouse
アプリケーション	適用あり: ICC/IF, IHC-P, IHC-Fr, WB
種交差性	交差種: Mouse, Human, Common marmoset 交差が予測される動物種: Rabbit, Pig 
免疫原	Synthetic peptide corresponding to Human DDX4/ MVH aa 700 to the C-terminus (C terminal) conjugated to keyhole limpet haemocyanin.
ポジティブ・コントロール	WB: Mouse testis tissue lysate and mouse EG whole cell lysate. IHC-P: Human normal testis tissue and adult marmoset testis tissue. ICC/IF: mES cells.
特記事項	<p>This antibody clone is manufactured by Abcam. If you require a custom buffer formulation or conjugation for your experiments, please contact orders@abcam.com.</p> <p>The Life Science industry has been in the grips of a reproducibility crisis for a number of years. Abcam is leading the way in addressing this with our range of recombinant monoclonal antibodies and knockout edited cell lines for gold-standard validation. Please check that this product meets your needs before purchasing.</p> <p>If you have any questions, special requirements or concerns, please send us an inquiry and/or contact our Support team ahead of purchase. Recommended alternatives for this product can be found below, along with publications, customer reviews and Q&As</p>

製品の特性

製品の状態	Liquid
保存方法	Shipped at 4°C. Upon delivery aliquot and store at -20°C or -80°C. Avoid repeated freeze / thaw cycles.
バッファー	pH: 7.40 Preservative: 0.02% Sodium azide Constituents: PBS, 6.97% L-Arginine
	Some batches contain 6.97% L-Arginine as a stabilizing agent. For lot-specific buffer information, please contact our Scientific Support team.

精製度	IgG fraction
ポリ/モノ	モノクローナル
クローン名	mAbcam27591
ミエローマ	Sp2/0-Ag14
アイソタイプ	IgG1
軽鎖の種類	kappa

アプリケーション

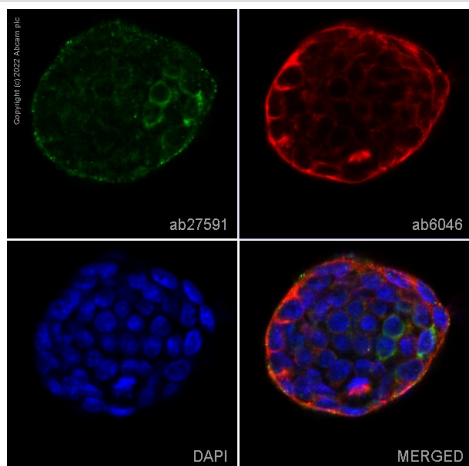
The Abpromise guarantee **Abpromise保証は、次のテスト済みアプリケーションにおけるab27591の使用に適用されます**
 アプリケーションノートには、推奨の開始希釈率がありますが、適切な希釈率につきましてはご検討ください。

アプリケーション	Abreviews	特記事項
ICC/IF		Use a concentration of 5 - 10 µg/ml.
IHC-P	★★★★★ (3)	Use a concentration of 0.1 - 1 µg/ml.
IHC-Fr	★★★★★ (4)	Use at an assay dependent concentration.
WB		Use a concentration of 1 - 5 µg/ml. Detects a band of approximately 80 kDa (predicted molecular weight: 76 kDa).

ターゲット情報

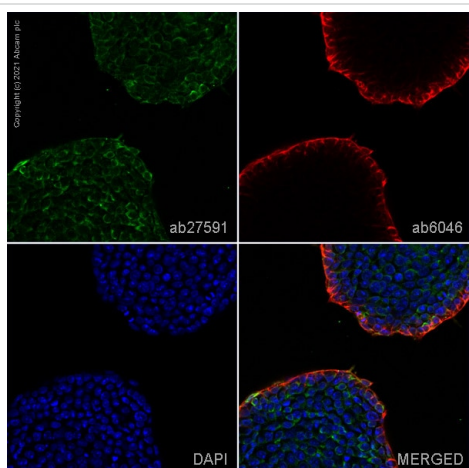
機能	Probable ATP-dependent RNA helicase required during spermatogenesis (PubMed:10920202, PubMed:21034600). Required to repress transposable elements and preventing their mobilization, which is essential for the germline integrity. Acts via the piRNA metabolic process, which mediates the repression of transposable elements during meiosis by forming complexes composed of piRNAs and Piwi proteins and governs the methylation and subsequent repression of transposons. Involved in the secondary piRNAs metabolic process, the production of piRNAs in fetal male germ cells through a ping-pong amplification cycle.
組織特異性	Expressed only in ovary and testis. Expressed in migratory primordial germ cells in the region of the gonadal ridge in both sexes.
配列類似性	Belongs to the DEAD box helicase family. DDX4/VASA subfamily. Contains 1 helicase ATP-binding domain. Contains 1 helicase C-terminal domain.
細胞内局在	Cytoplasm. Cytoplasm, perinuclear region. Component of the meiotic nuage, also named P granule, a germ-cell-specific organelle required to repress transposon activity during meiosis.

画像



Immunocytochemistry/ Immunofluorescence - Anti-DDX4 / MVH antibody [mAbcam27591] (ab27591)

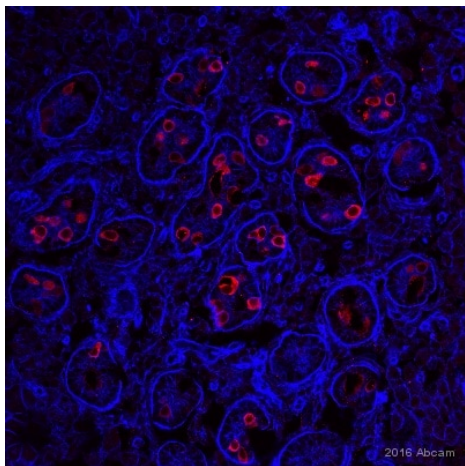
ab27591 staining DDX4/MVH in mES cells. The cells were fixed with 100% methanol (5 min) then permeabilized with 0.1% Triton X-100 for 5 minutes and then blocked with 1% BSA/10% normal goat serum/0.3M glycine in 0.1% PBS-Tween for 1h. The cells were then incubated with ab27591 at 10µg/ml concentration and **ab6046** (Rabbit polyclonal to beta Tubulin) at 1/1000 dilution overnight at 4°C followed by a further incubation at room temperature for 1h with a goat secondary antibody to mouse IgG (Alexa Fluor® 488) (**ab150117**) at 2 µg/ml (shown in green) and a goat secondary antibody to rabbit IgG (Alexa Fluor® 594) (**ab150080**) at 2 µg/ml (shown in red). Nuclear DNA was labelled in blue with DAPI. Image was taken with a confocal microscope (Leica-Microsystems TCS SP8).



Immunocytochemistry/ Immunofluorescence - Anti-DDX4 / MVH antibody [mAbcam27591] (ab27591)

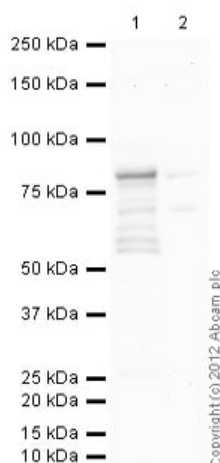
ab27591 staining DDX4/MVH in mES cells. The cells were fixed with 100% methanol (5 min), permeabilized with 0.1% PBS-Triton X-100 for 5 minutes and then blocked with 1% BSA/10% normal goat serum/0.3M glycine in 0.1% PBS-Tween for 1h. The cells were then incubated overnight at 4°C with ab27591 at 1µg/ml and **ab6046**, Rabbit polyclonal to beta Tubulin - Loading Control. Cells were then incubated with **ab150117**, Goat polyclonal Secondary Antibody to Mouse IgG H&L (Alexa Fluor® 488) preadsorbed at 1/1000 dilution (shown in green) and **ab150080**, Goat polyclonal Secondary Antibody to Rabbit IgG - H&L (Alexa Fluor® 594) at 1/1000 dilution (shown in pseudocolour red). Nuclear DNA was labelled with DAPI (shown in blue).

Image was acquired with a confocal microscope (Leica-Microsystems TCS SP8) and a single confocal section is shown.



Immunohistochemistry (Frozen sections) - Anti-DDX4 / MVH antibody [mAbcam27591] (ab27591)

This image is courtesy of an Abreview by Bryan Niedenberger.



Western blot - Anti-DDX4 / MVH antibody [mAbcam27591] (ab27591)

ab27591 staining DDX4 / MVH antibody in pig tissue sections (testis, postnatal day 42) by Immunohistochemistry (IHC-Fr - frozen sections). Tissue was fixed with paraformaldehyde, permeabilized with 0.1% 0.1% Triton X-100 in PBS and blocked with 3% BSA for 30 minutes at 20°C. Samples were incubated with primary antibody (1/200 in PBS) for 1 hour at 20°C. Ab150110I at a dilution of 1/500 was used as the secondary antibody.

All lanes : Anti-DDX4 / MVH antibody [mAbcam27591] (ab27591) at 5 µg/ml (Blocked with 3% Milk)

Lane 1 : Mouse Testis Tissue Lysate

Lane 2 : Mouse EG (TMAS Embryonic Germ Cells) Whole Cell Lysate

Lysates/proteins at 20 µg per lane.

Secondary

All lanes : Goat Anti-Mouse IgG H&L (HRP) preadsorbed (**ab97040**) at 1/5000 dilution

Developed using the ECL technique.

Performed under reducing conditions.

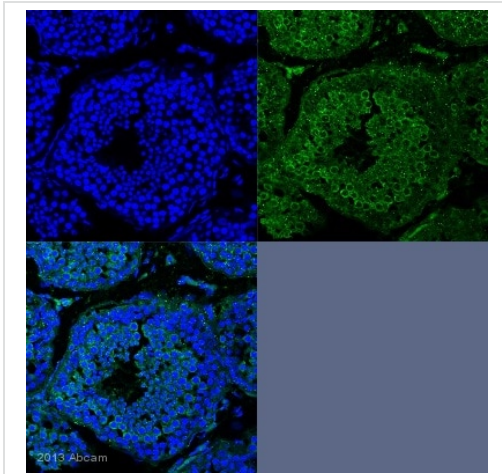
Predicted band size: 76 kDa

Observed band size: 80 kDa

Additional bands at: 70 kDa. We are unsure as to the identity of these extra bands.

Exposure time: 1 minute

Abcam recommends using milk as the blocking agent. Abcam welcomes customer feedback and would appreciate any comments regarding this product and the data presented above.

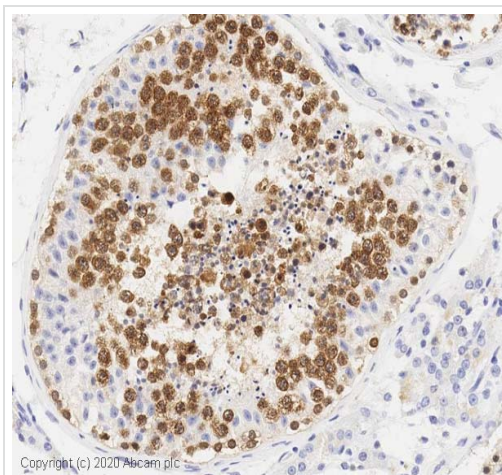


Immunohistochemistry (Formalin/PFA-fixed paraffin-embedded sections) - Anti-DDX4 / MVH antibody

[mAbcam27591] (ab27591)

This image is courtesy of an abreview from Zachary Yu-Ching Lin.

IHC-P image of DDX4 / MVH (ab27591) on adult marmoset testis. The sections were fixed with Formaldehyde and blocked in 5% milk for 30 minutes, before incubation with the DDX4 antibody (1/50 dilution) for 18 hours at 4°C. Cytoplasmic staining is seen with ab27591 (green), DAPI was used to stain nuclei (blue).



Immunohistochemistry (Formalin/PFA-fixed paraffin-embedded sections) - Anti-DDX4 / MVH antibody

[mAbcam27591] (ab27591)

IHC image of DDX4/MVH antibody staining in a section of formalin-fixed paraffin-embedded normal human testis* performed on a Leica BOND™ system using the standard protocol. The section was pre-treated using heat mediated antigen retrieval with sodium citrate buffer (pH6, epitope retrieval solution 1) for 20mins. The section was then incubated with [ab27561](#), 1ug/ml, for 15 mins at room temperature and detected using an HRP conjugated compact polymer system. DAB was used as the chromogen. The section was then counterstained with haematoxylin and mounted with DPX.

For other IHC staining systems (automated and non-automated) customers should optimize variable parameters such as antigen retrieval conditions, primary antibody concentration and antibody incubation times.

**Tissue obtained from the Human Research Tissue Bank, supported by the NIHR Cambridge Biomedical Research Centre*

Please note: All products are "FOR RESEARCH USE ONLY. NOT FOR USE IN DIAGNOSTIC PROCEDURES"

Our Abpromise to you: Quality guaranteed and expert technical support

- Replacement or refund for products not performing as stated on the datasheet
- Valid for 12 months from date of delivery
- Response to your inquiry within 24 hours
- We provide support in Chinese, English, French, German, Japanese and Spanish

- Extensive multi-media technical resources to help you
- We investigate all quality concerns to ensure our products perform to the highest standards

If the product does not perform as described on this datasheet, we will offer a refund or replacement. For full details of the Abpromise, please visit <https://www.abcam.co.jp/abpromise> or contact our technical team.

Terms and conditions

- Guarantee only valid for products bought direct from Abcam or one of our authorized distributors