


### Anti-DDX24 antibody ab70463

[1 References](#) [画像数 2](#)

#### 製品の概要

<b>製品名</b>	Anti-DDX24 antibody
<b>製品の詳細</b>	Rabbit polyclonal to DDX24
<b>由来種</b>	Rabbit
<b>アプリケーション</b>	<b>適用あり:</b> IP, WB
<b>種交差性</b>	<b>交差種:</b> Mouse, Human <b>交差が予測される動物種:</b> Chimpanzee, Rhesus monkey, Gorilla, Orangutan 
<b>免疫原</b>	Synthetic peptide corresponding to a region between residue 325 and 375 of Human DDX24 (NP_065147.1)
<b>ポジティブ・コントロール</b>	WB: HeLa, HEK293T, NIH/3T3 whole cell lysates. IP: HeLa
<b>特記事項</b>	The Life Science industry has been in the grips of a reproducibility crisis for a number of years. Abcam is leading the way in addressing this with our range of recombinant monoclonal antibodies and knockout edited cell lines for gold-standard validation. Please check that this product meets your needs before purchasing.  If you have any questions, special requirements or concerns, please send us an inquiry and/or contact our Support team ahead of purchase. Recommended alternatives for this product can be found below, along with publications, customer reviews and Q&As

#### 製品の特性

<b>製品の状態</b>	Liquid
<b>保存方法</b>	Shipped at 4°C. Upon delivery aliquot and store at -20°C. Avoid freeze / thaw cycles.
<b>バッファー</b>	pH: 7 Preservative: 0.09% Sodium azide Constituents: 1.815% Tris, 1.764% Sodium citrate, 0.021% PBS
<b>精製度</b>	Immunogen affinity purified
<b>特記事項(精製)</b>	Antibody was affinity purified using an epitope specific to DDX24 immobilized on solid support
<b>ポリ/モノ</b>	ポリクローナル
<b>アイソタイプ</b>	IgG

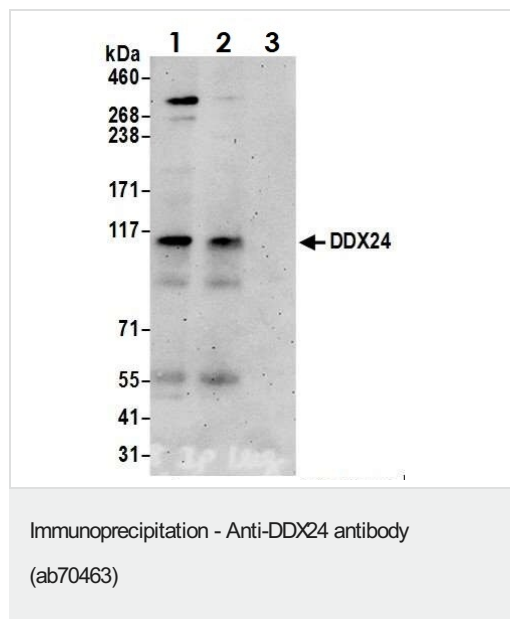
**The Abpromise guarantee** **Abpromise保証は、** 次のテスト済みアプリケーションにおけるab70463の使用に適用されません  
 アプリケーションノートには、推奨の開始希釈率がありますが、適切な希釈率につきましてはご検討ください。

アプリケーション	Abreviews	特記事項
IP		Use at 2-5 µg/mg of lysate.
WB		1/1000 - 1/5000. Detects a band of approximately 120 kDa (predicted molecular weight: 97 kDa).

ターゲット情報

機能	ATP-dependent RNA helicase.
組織特異性	Ubiquitous. Most abundant in heart and brain, but with lowest levels in thymus and small intestine.
配列類似性	Belongs to the DEAD box helicase family. DDX24/MAK5 subfamily. Contains 1 helicase ATP-binding domain. Contains 1 helicase C-terminal domain.
翻訳後修飾	Phosphorylated upon DNA damage, probably by ATM or ATR.

画像



DDX24 was immunoprecipitated from HeLa whole cell lysate (1 mg per IP reaction, 20% loaded) with ab70463 at 6 µg per reaction.

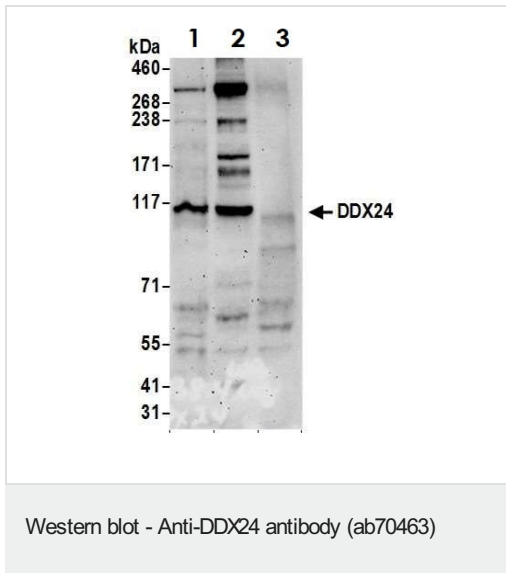
Western blot was performed on the immunoprecipitate using ab70463 at 1 µg/mL.

Lane 1: ab70463 IP in HeLa whole cell lysate.

Lane 2: ab70463 IP in HeLa whole cell lysate.

Lane 3: Control IgG in HeLa whole cell lysate.

Detection: Chemiluminescence with an exposure time of 3 minutes



**All lanes :** Anti-DDX24 antibody (ab70463) at 0.4 µg/ml

**Lane 1 :** HeLa whole cell lysate

**Lane 2 :** HEK293T whole cell lysate

**Lane 3 :** NIH/3T3 whole cell lysate

Lysates/proteins at 50 µg per lane.

**Predicted band size:** 97 kDa

**Exposure time:** 3 minutes

**Please note:** All products are "FOR RESEARCH USE ONLY. NOT FOR USE IN DIAGNOSTIC PROCEDURES"

### Our Abpromise to you: Quality guaranteed and expert technical support

- Replacement or refund for products not performing as stated on the datasheet
- Valid for 12 months from date of delivery
- Response to your inquiry within 24 hours
- We provide support in Chinese, English, French, German, Japanese and Spanish
- Extensive multi-media technical resources to help you
- We investigate all quality concerns to ensure our products perform to the highest standards

If the product does not perform as described on this datasheet, we will offer a refund or replacement. For full details of the Abpromise, please visit <https://www.abcam.co.jp/abpromise> or contact our technical team.

### Terms and conditions

- Guarantee only valid for products bought direct from Abcam or one of our authorized distributors