


Anti-DDX1 antibody ab70252

★★★★★ [4 Abreviews](#) [2 References](#) [画像数 4](#)

製品の概要

製品名	Anti-DDX1 antibody
製品の詳細	Rabbit polyclonal to DDX1
由来種	Rabbit
アプリケーション	適用あり: WB, IHC-P, IP
種交差性	交差種: Mouse, Human 交差が予測される動物種: Rat, Rabbit, Horse, Chicken, Guinea pig, Cow, Dog, Turkey, Pig, Chimpanzee, Rhesus monkey, Gorilla, Orangutan 
免疫原	Synthetic peptide corresponding to Human DDX1 (C terminal). Synthetic peptide corresponding to a region between residue 650 and the C-terminus (residue 697) of human DDX1. (AAH12739.1) Database link: Q92499
ポジティブ・コントロール	Whole cell lysate from Hela cells
特記事項	<p>The Life Science industry has been in the grips of a reproducibility crisis for a number of years. Abcam is leading the way in addressing this with our range of recombinant monoclonal antibodies and knockout edited cell lines for gold-standard validation. Please check that this product meets your needs before purchasing.</p> <p>If you have any questions, special requirements or concerns, please send us an inquiry and/or contact our Support team ahead of purchase. Recommended alternatives for this product can be found below, along with publications, customer reviews and Q&As</p>

製品の特性

製品の状態	Liquid
保存方法	Shipped at 4°C. Upon delivery aliquot and store at -20°C. Avoid freeze / thaw cycles.
バッファー	pH: 6.8 Preservative: 0.09% Sodium azide Constituents: 0.1% BSA, Tris buffered saline
精製度	Immunogen affinity purified
ポリ/モノ	ポリクローナル
アイソタイプ	IgG

アプリケーション

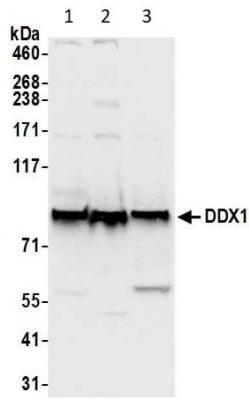
The Abpromise guarantee Abpromise保証は、次のテスト済みアプリケーションにおけるab70252の使用に適用されます
アプリケーションノートには、推奨の開始希釈率がありますが、適切な希釈率につきましてはご検討ください。

アプリケーション	Abreviews	特記事項
WB	★★★★★ (1)	1/1000 - 1/10000. Detects a band of approximately 90 kDa (predicted molecular weight: 83 kDa).
IHC-P		1/100 - 1/500. Perform heat mediated antigen retrieval with citrate buffer pH 6 before commencing with IHC staining protocol.
IP	★★★★★ (1)	Use at 3-5 µg/mg of lysate.

ターゲット情報

機能	Acts as an ATP-dependent RNA helicase, able to unwind both RNA-RNA and RNA-DNA duplexes. Possesses 5' single-stranded RNA overhang nuclease activity. Possesses ATPase activity on various RNA, but not DNA polynucleotides. May play a role in RNA clearance at DNA double-strand breaks (DSBs), thereby facilitating the template-guided repair of transcriptionally active regions of the genome. Together with RELA, acts as a coactivator to enhance NF-kappa-B-mediated transcriptional activation. Acts as a positive transcriptional regulator of cyclin CCND2 expression. Binds to the cyclin CCND2 promoter region. Associates with chromatin at the NF-kappa-B promoter region via association with RELA. Binds to poly(A) RNA. May be involved in 3'-end cleavage and polyadenylation of pre-mRNAs. Required for HIV-1 Rev function as well as for HIV-1 replication. Binds to the RRE sequence of HIV-1 mRNAs.
組織特異性	Highest levels of transcription in 2 retinoblastoma cell lines and in tissues of neuroectodermal origin including the retina, brain, and spinal cord.
配列類似性	Belongs to the DEAD box helicase family. DDX1 subfamily. Contains 1 B30.2/SPRY domain. Contains 1 helicase ATP-binding domain. Contains 1 helicase C-terminal domain.
ドメイン	The helicase domain is involved in the stimulation of RELA transcriptional activity.
翻訳後修飾	Phosphorylated. Phosphorylated by ATM kinase; phosphorylation is increased in response to ionizing radiation (IR).
細胞内局在	Nucleus. Cytoplasm. Cytoplasmic granule. Localized with MBNL1, TIAL1 and YBX1 in stress granules upon stress. Localized with CSTF2 in cleavage bodies. Forms large aggregates called DDX1 bodies. Relocalized into multiple foci (IR-induced foci or IRIF) after IR treatment, a process that depends on the presence of chromosomal DNA and/or RNA-DNA duplexes. Relocalized at sites of DNA double-strand breaks (DSBs) in an ATM-dependent manner after IR treatment. Colocalized with RELA in the nucleus upon TNF-alpha induction. Relocalized to the cytoplasm with a perinuclear staining pattern in avian infectious bronchitis virus (IBV)-infected cells. Required for proper localization of HIV-1 Rev.

画像



Western blot - Anti-DDX1 antibody (ab70252)

All lanes : Anti-DDX1 antibody (ab70252) at 0.1 µg/ml

Lane 1 : HeLa cell lysate

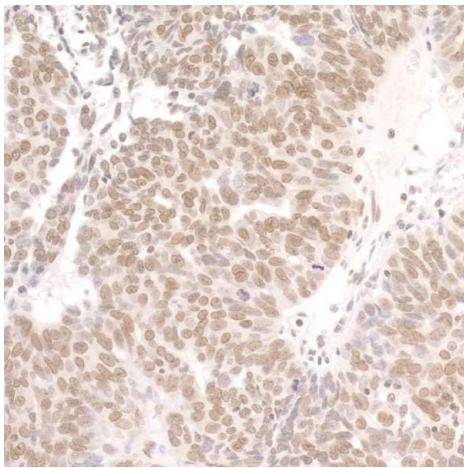
Lane 2 : HEK293T cell lysate

Lane 3 : NIH3T3 cell lysate

Lysates/proteins at 50 µg per lane.

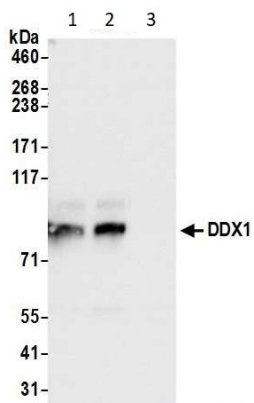
Predicted band size: 83 kDa

Exposure time: 1 second

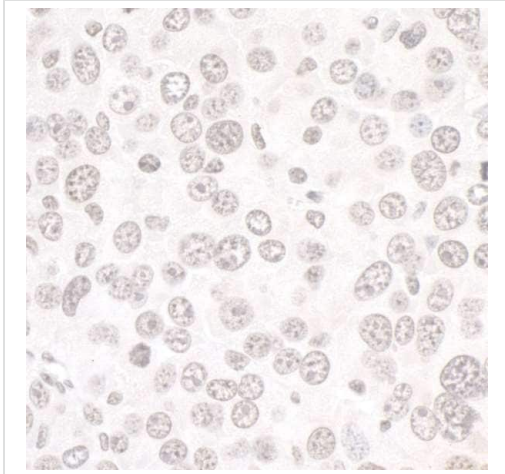


Immunohistochemistry (Formalin/PFA-fixed paraffin-embedded sections) - Anti-DDX1 antibody (ab70252)

Immunohistochemistry (Formalin/PFA-fixed paraffin-embedded sections) analysis of human ovarian seminoma tissue labelling DDX1 with ab70252 at 1/200 (1µg/ml). Detection: DAB.



Immunoprecipitation - Anti-DDX1 antibody (ab70252)



Immunohistochemistry (Formalin/PFA-fixed paraffin-embedded sections) analysis of mouse renal seminoma tissue labelling DDX1 with ab70252 at 1/200 (1 µg/ml). Detection: DAB.

Immunohistochemistry (Formalin/PFA-fixed paraffin-embedded sections) - Anti-DDX1 antibody (ab70252)

Please note: All products are "FOR RESEARCH USE ONLY. NOT FOR USE IN DIAGNOSTIC PROCEDURES"

Our Abpromise to you: Quality guaranteed and expert technical support

- Replacement or refund for products not performing as stated on the datasheet
- Valid for 12 months from date of delivery
- Response to your inquiry within 24 hours

- We provide support in Chinese, English, French, German, Japanese and Spanish
- Extensive multi-media technical resources to help you
- We investigate all quality concerns to ensure our products perform to the highest standards

If the product does not perform as described on this datasheet, we will offer a refund or replacement. For full details of the Abpromise, please visit <https://www.abcam.co.jp/abpromise> or contact our technical team.

Terms and conditions

- Guarantee only valid for products bought direct from Abcam or one of our authorized distributors