

Anti-DDR2 antibody [3B11E4] ab63337

★★★★★ [2 Abreviews](#) [6 References](#) [画像数 4](#)

製品の概要

製品名	Anti-DDR2 antibody [3B11E4]
製品の詳細	Mouse monoclonal [3B11E4] to DDR2
由来種	Mouse
アプリケーション	適用あり: Flow Cyt, WB, ICC/IF, IHC-P
種交差性	交差種: Human, Recombinant fragment
免疫原	Recombinant fragment corresponding to Human DDR2. Purified truncated recombinant Human DDR2 expressed in E. Coli strain BL21 (DE3)
ポジティブ・コントロール	ICC/IF: A549 cells Flow Cyt: A549 cells Gc-7901 cells
特記事項	<p>The Life Science industry has been in the grips of a reproducibility crisis for a number of years. Abcam is leading the way in addressing this with our range of recombinant monoclonal antibodies and knockout edited cell lines for gold-standard validation. Please check that this product meets your needs before purchasing.</p> <p>If you have any questions, special requirements or concerns, please send us an inquiry and/or contact our Support team ahead of purchase. Recommended alternatives for this product can be found below, along with publications, customer reviews and Q&As</p>

製品の特性

製品の状態	Liquid
保存方法	Shipped at 4°C. Upon delivery aliquot and store at -20°C. Avoid freeze / thaw cycles.
バッファー	Preservative: 0.05% Sodium azide Constituent: PBS
精製度	Protein G purified
特記事項 (精製)	Purified from tissue culture supernatant.
ポリ/モノ	モノクローナル
クローン名	3B11E4
アイソタイプ	IgG2a

アプリケーション

The Abpromise guarantee

Abpromise保証は、次のテスト済みアプリケーションにおけるab63337の使用に適用されます

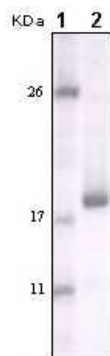
アプリケーションノートには、推奨の開始希釈率がありますが、適切な希釈率につきましてはご確認ください。

アプリケーション	Abreviews	特記事項
Flow Cyt		1/100 - 1/200. ab170191 - Mouse monoclonal IgG2a, is suitable for use as an isotype control with this antibody.
WB		1/500 - 1/2000. Predicted molecular weight: 97 kDa.
ICC/IF	★★★★★ (1)	1/500 - 1/2000.
IHC-P	★★★☆☆ (1)	1/500 - 1/2000.

ターゲット情報

機能	This tyrosine kinase receptor for fibrillar collagen mediates fibroblast migration and proliferation. Contributes to cutaneous wound healing.
組織特異性	The major 10 kDa transcript is expressed in high levels in heart and lung, less in brain, placenta, liver, skeletal muscle, pancreas, and kidney.
関連疾患	Defects in DDR2 are the cause of spondyloepimetaphyseal dysplasia short limb-hand type (SEMD-SL) [MIM:271665]. A bone disease characterized by short-limbed dwarfism, a narrow chest with pectus excavatum, brachydactyly in the hands and feet, a characteristic craniofacial appearance and premature calcifications. The radiological findings are distinctive and comprise short long bones throughout the skeleton with striking epiphyses that are stippled, flattened and fragmented and flared, irregular metaphyses. Platyspondyly in the spine with wide intervertebral spaces is observed and some vertebral bodies are pear-shaped with central humps, anterior protrusions and posterior scalloping.
配列類似性	Belongs to the protein kinase superfamily. Tyr protein kinase family. Insulin receptor subfamily. Contains 1 F5/8 type C domain. Contains 1 protein kinase domain.
細胞内局在	Membrane.

画像



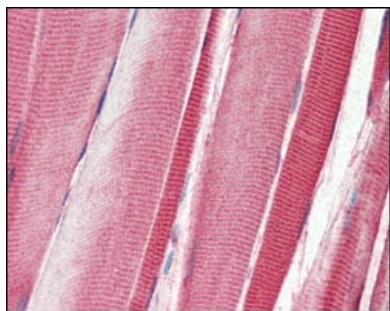
Western blot - Anti-DDR2 antibody [3B11E4]
(ab63337)

All lanes : Anti-DDR2 antibody [3B11E4] (ab63337) at 1/500 dilution

Lane 1 : molecular weight markers

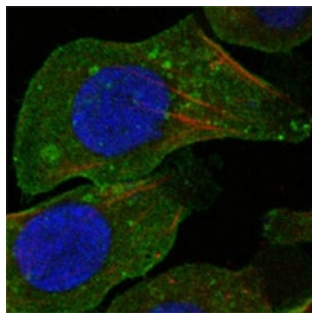
Lane 2 : truncated recombinant DDR2 (immunizing peptide)

Predicted band size: 97 kDa



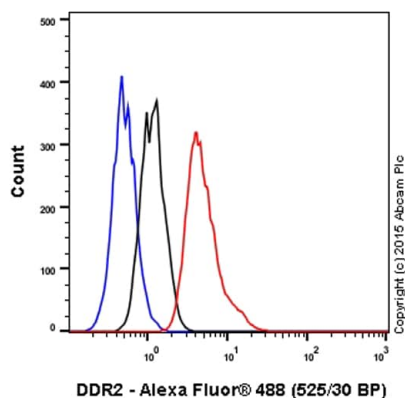
Immunohistochemistry (Formalin/PFA-fixed paraffin-embedded sections) - Anti-DDR2 antibody [3B11E4]
(ab63337)

ab63337 at 1/1000 dilution staining DDR2 in human skeletal muscle tissue section by Immunohistochemistry (Formalin/ PFA-fixed paraffin-embedded tissue sections).



Immunocytochemistry/ Immunofluorescence - Anti-DDR2 antibody [3B11E4] (ab63337)

ab63337 at 1/1000 dilution staining DDR2 in human A549 cells by Immunocytochemistry/ Immunofluorescence. An Alexa Fluor® conjugated Goat anti-mouse was used as secondary. The actin filaments were labeled red with DY-554 phalloidin whilst nuclei were stained blue with DRAQ5 fluorescent DNA dye.



Flow Cytometry - Anti-DDR2 antibody [3B11E4]
(ab63337)

Overlay histogram showing A549 cells stained with ab63337 (red line). The cells were fixed with 80% methanol (5 min) and then permeabilized with 0.1% PBS-Tween for 20 min. The cells were then incubated in 1x PBS / 10% normal goat serum / 0.3M glycine to block non-specific protein-protein interactions followed by the antibody (ab63337, 1/200 dilution) for 30 min at 22°C. The secondary antibody used was Alexa Fluor® 488 goat anti-mouse IgG (H&L) preadsorbed (**ab150117**) at 1/2000 dilution for 30 min at 22°C. Isotype control antibody (black line) was mouse IgG2a (**ab170191**, 0.5µg/1x10⁶ cells) used under the same conditions. Unlabelled sample (blue line) was also used as a control. Acquisition of >5,000 events were collected using a 20mW Argon ion laser (488nm) and 525/30 bandpass filter.

Please note: All products are "FOR RESEARCH USE ONLY. NOT FOR USE IN DIAGNOSTIC PROCEDURES"

Our Abpromise to you: Quality guaranteed and expert technical support

- Replacement or refund for products not performing as stated on the datasheet
- Valid for 12 months from date of delivery
- Response to your inquiry within 24 hours
- We provide support in Chinese, English, French, German, Japanese and Spanish
- Extensive multi-media technical resources to help you
- We investigate all quality concerns to ensure our products perform to the highest standards

If the product does not perform as described on this datasheet, we will offer a refund or replacement. For full details of the Abpromise, please visit <https://www.abcam.co.jp/abpromise> or contact our technical team.

Terms and conditions

- Guarantee only valid for products bought direct from Abcam or one of our authorized distributors