


Anti-DDAH1 antibody ab108088

KO 評価済

1 References 画像数 3

製品の概要

製品名	Anti-DDAH1 antibody
製品の詳細	Rabbit polyclonal to DDAH1
由来種	Rabbit
アプリケーション	適用あり: WB, IHC-P
種交差性	<p>交差種: Human</p> <p>交差が予測される動物種: Mouse, Rat, Horse, Cow, Dog, Pig, Macaque monkey, Chinese hamster </p>
免疫原	Synthetic peptide conjugated to KLH derived from within residues 200 to the C-terminus of Human DDAH1. Immunogen の所有権に関して
ポジティブ・コントロール	WB: Wild-type A431 cell lysate. A431, HUVEC, HepG2 and HEK293 cell lysates; Human fetal liver, liver, kidney, brain and pancreas cell lysates. IHC-P: Human kidney tissue.
特記事項	<p>The Life Science industry has been in the grips of a reproducibility crisis for a number of years. Abcam is leading the way in addressing this with our range of recombinant monoclonal antibodies and knockout edited cell lines for gold-standard validation. Please check that this product meets your needs before purchasing.</p> <p>If you have any questions, special requirements or concerns, please send us an inquiry and/or contact our Support team ahead of purchase. Recommended alternatives for this product can be found below, along with publications, customer reviews and Q&As</p>

製品の特性

製品の状態	Liquid
保存方法	Shipped at 4°C. Store at +4°C short term (1-2 weeks). Upon delivery aliquot. Store at -20°C or -80°C. Avoid freeze / thaw cycle.
バッファー	<p>pH: 7.4</p> <p>Preservative: 0.02% Sodium azide</p> <p>Constituent: PBS</p>

Batches of this product that have a concentration < 1mg/ml may have BSA added as a stabilising agent. If you would like information about the formulation of a specific lot, please contact our

scientific support team who will be happy to help.

精製度

Immunogen affinity purified

ポリ/モノ

ポリクローナル

アイソタイプ

IgG

アプリケーション

The Abpromise guarantee

Abpromise保証は、次のテスト済みアプリケーションにおけるab108088の使用に適用されます

アプリケーションノートには、推奨の開始希釈率がありますが、適切な希釈率につきましてはご確認ください。

アプリケーション	Abreviews	特記事項
WB		Use a concentration of 1 µg/ml. Detects a band of approximately 37 kDa (predicted molecular weight: 31 kDa).
IHC-P		Use a concentration of 1 µg/ml. Perform heat mediated antigen retrieval before commencing with IHC staining protocol.

ターゲット情報

機能

Hydrolyzes N(G),N(G)-dimethyl-L-arginine (ADMA) and N(G)-monomethyl-L-arginine (MMA) which act as inhibitors of NOS. Has therefore a role in the regulation of nitric oxide generation.

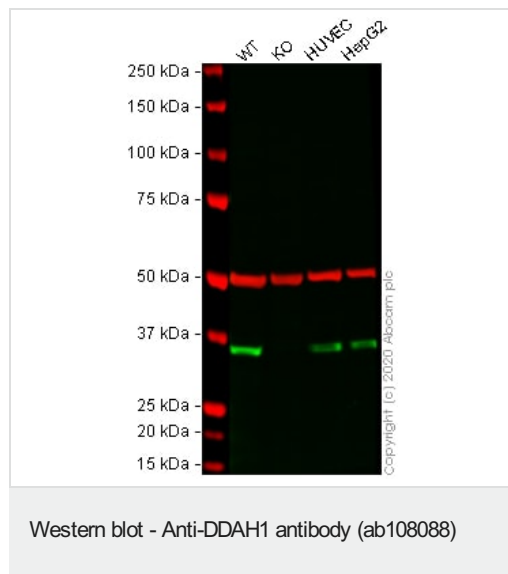
組織特異性

Detected in brain, liver, kidney and pancreas, and at low levels in skeletal muscle.

配列類似性

Belongs to the DDAH family.

画像



All lanes : Anti-DDAH1 antibody (ab108088) at 1 µg/ml

Lane 1 : Wild-type A431 cell lysate

Lane 2 : DDAH1 knockout A431 cell lysate

Lane 3 : HUVEC (Human umbilical vein endothelial cell line) whole cell lysate

Lane 4 : Hep G2 (Human liver hepatocellular carcinoma cell line) whole cell lysate

Lysates/proteins at 40 µg per lane.

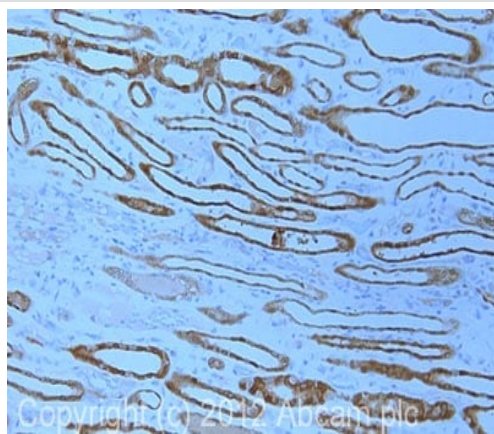
Performed under reducing conditions.

Predicted band size: 31 kDa

Observed band size: 35 kDa

Lanes 1 - 4: Merged signal (red and green). Green - ab108088 observed at 35 kDa. Red - loading control, **ab7291** (Mouse anti-Alpha Tubulin [DM1A]) observed at 55kDa.

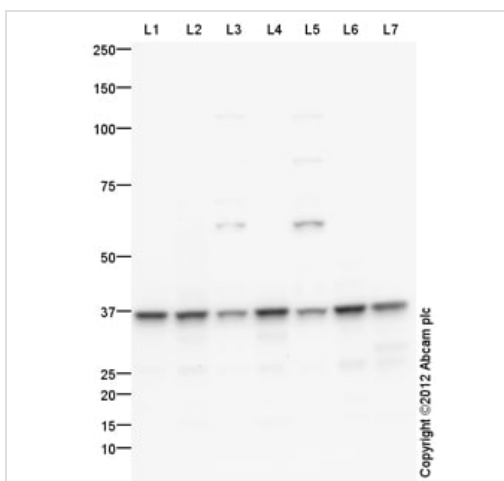
ab108088 was shown to react with DDAH1 in wild-type A431 cells in western blot. Loss of signal was observed when DDAH1 knockout sample was used. Wild-type and DDAH1 knockout A431 cell lysates were subjected to SDS-PAGE. Membranes were blocked in 3% milk in TBS-T (0.1% Tween®) before incubation with ab108088 and **ab7291** (Mouse anti-Alpha Tubulin [DM1A]) overnight at 4°C at 1 µg/ml and a 1 in 20000 dilution respectively. Blots were incubated with Goat anti-Rabbit IgG H&L (IRDye® 800CW) preabsorbed (**ab216773**) and Goat anti-Mouse IgG H&L (IRDye® 680RD) preabsorbed (**ab216776**) secondary antibodies at 1 in 20000 dilution for 1 hour at room temperature before imaging.



Immunohistochemistry (Formalin/PFA-fixed paraffin-embedded sections) - Anti-DDAH1 antibody (ab108088)

IHC image of DDAH1 staining in human kidney formalin fixed paraffin embedded tissue section, performed on a Leica Bond™ system using the standard protocol F. The section was pre-treated using heat mediated antigen retrieval with sodium citrate buffer (pH6, epitope retrieval solution 1) for 20 mins. The section was then incubated with ab108088, 1µg/ml, for 15 mins at room temperature and detected using an HRP conjugated compact polymer system. DAB was used as the chromogen. The section was then counterstained with haematoxylin and mounted with DPX.

For other IHC staining systems (automated and non-automated) customers should optimize variable parameters such as antigen retrieval conditions, primary antibody concentration and antibody incubation times.



Western blot - Anti-DDAH1 antibody (ab108088)

All lanes : Anti-DDAH1 antibody (ab108088) at 1 µg/ml

Lane 1 : Lung (Human) Whole Cell Lysate - fetal normal tissue (**ab30282**)

Lane 2 : Human liver tissue lysate - total protein (**ab29889**)

Lane 3 : HepG2 (Human hepatocellular liver carcinoma cell line) Whole Cell Lysate

Lane 4 : Human kidney tissue lysate - total protein (**ab30203**)

Lane 5 : HEK293 (Human embryonic kidney cell line) Whole Cell Lysate

Lane 6 : Human brain tissue lysate - total protein (**ab29466**)

Lane 7 : Human pancreas tissue lysate - total protein (**ab29816**)

Lysates/proteins at 10 µg per lane.

Secondary

All lanes : Goat Anti-Rabbit IgG H&L (HRP) preadsorbed (**ab97080**) at 1/5000 dilution

Developed using the ECL technique.

Performed under reducing conditions.

Predicted band size: 31 kDa

Observed band size: 37 kDa

Additional bands at: 62 kDa. We are unsure as to the identity of these extra bands.

Exposure time: 1 minute

Please note: All products are "FOR RESEARCH USE ONLY. NOT FOR USE IN DIAGNOSTIC PROCEDURES"

Our Abpromise to you: Quality guaranteed and expert technical support

- Replacement or refund for products not performing as stated on the datasheet
- Valid for 12 months from date of delivery
- Response to your inquiry within 24 hours
- We provide support in Chinese, English, French, German, Japanese and Spanish
- Extensive multi-media technical resources to help you
- We investigate all quality concerns to ensure our products perform to the highest standards

If the product does not perform as described on this datasheet, we will offer a refund or replacement. For full details of the Abpromise, please visit <https://www.abcam.co.jp/abpromise> or contact our technical team.

Terms and conditions

- Guarantee only valid for products bought direct from Abcam or one of our authorized distributors