


Anti-DCLK2 antibody ab106639

3 References [画像数 3](#)

製品の概要

製品名	Anti-DCLK2 antibody
製品の詳細	Rabbit polyclonal to DCLK2
由来種	Rabbit
特異性	Based on analysis of the immunogen sequence, we would expect this antibody to react with all three described isoforms of human DCLK2 (Q8N568-1, -2,-3) isoforms 1 and 3 of rat DCLK2 (Q5MPA9-1,-3) but not isoform 2 (Q5MPA9-2), and isoforms 1, 2, and 3 (Q6PGN3-1,-2,-3) of mouse DCLK2 but not isoform 4, 5, and 6 (Q6PGN3-4,-5,-6).
アプリケーション	適用あり: IHC-P, WB
種交差性	交差種: Rat 交差が予測される動物種: Mouse 
免疫原	Synthetic peptide corresponding to Human DCLK2 (C terminal). Database link: NP_001035350
ポジティブ・コントロール	Rat brain tissue and tissue lysate.
特記事項	<p>The Life Science industry has been in the grips of a reproducibility crisis for a number of years. Abcam is leading the way in addressing this with our range of recombinant monoclonal antibodies and knockout edited cell lines for gold-standard validation. Please check that this product meets your needs before purchasing.</p> <p>If you have any questions, special requirements or concerns, please send us an inquiry and/or contact our Support team ahead of purchase. Recommended alternatives for this product can be found below, along with publications, customer reviews and Q&As</p>

製品の特性

製品の状態	Liquid
保存方法	Shipped at 4°C. Store at 4°C (stable for up to 12 months).
バッファー	pH: 7.2 Preservative: 0.02% Sodium azide Constituent: PBS
精製度	Protein A purified
特記事項 (精製)	ab106639 is purified by affinity chromatography via a peptide column.

ポリ/モノ
アイソタイプ

ポリクローナル
IgG

アプリケーション

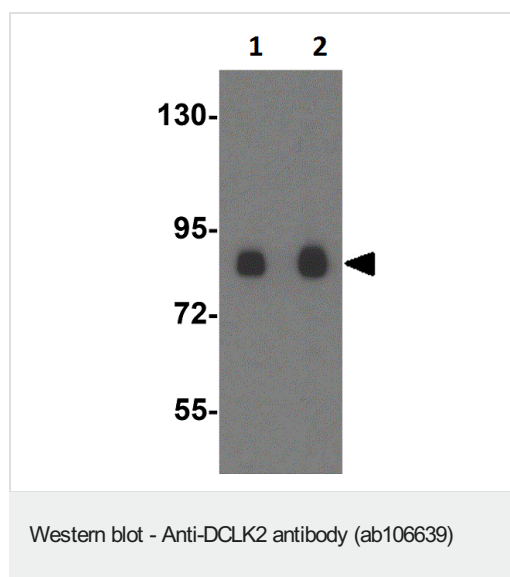
The Abpromise guarantee Abpromise保証は、 次のテスト済みアプリケーションにおけるab106639の使用に適用されます
アプリケーションノートには、推奨の開始希釈率がありますが、適切な希釈率につきましてはご検討ください。

アプリケーション	Abreviews	特記事項
IHC-P		Use a concentration of 5 µg/ml.
WB		Use a concentration of 1 - 2 µg/ml. Predicted molecular weight: 84 kDa.

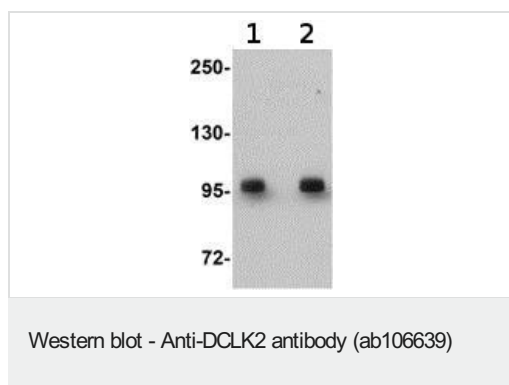
ターゲット情報

機能	Protein kinase with a significantly reduced Ca ²⁺ /CAM affinity and dependence compared to other members of the CaMK family. May play a role in the down-regulation of CRE-dependent gene activation probably by phosphorylation of the CREB coactivator CRTC2/TORC2 and the resulting retention of TORC2 in the cytoplasm.
配列類似性	Belongs to the protein kinase superfamily. CAMK Ser/Thr protein kinase family. CaMK subfamily. Contains 2 doublecortin domains. Contains 1 protein kinase domain.
ドメイン	The doublecortin domains are involved in the colocalization with microtubules.
細胞内局在	Cytoplasm > cytoskeleton. Colocalizes with microtubules.

画像



Western Blot of rat brain tissue lysate labeling DCLK2 with Anti-DCLK2 antibody (ab106639) at (1) 1 and (2) 2µg/ml.



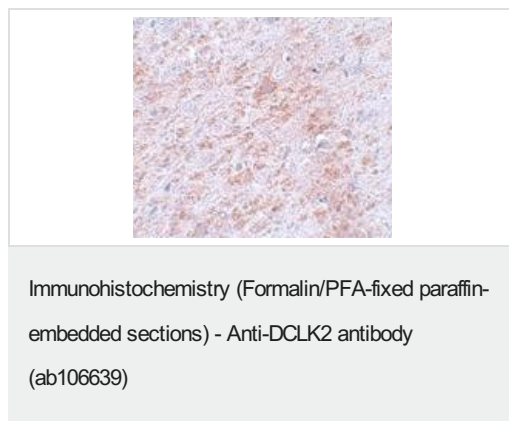
Lane 1 : Anti-DCLK2 antibody (ab106639) at 1 µg/ml

Lane 2 : Anti-DCLK2 antibody (ab106639) at 2 µg/ml

All lanes : Rat brain tissue lysate

Lysates/proteins at 15 µg per lane.

Predicted band size: 84 kDa



ab106639 at 5µg/ml, staining DCLK2 in Rat brain, using Immunohistochemistry, Formalin-fixed, Paraffin-embedded tissue.

Please note: All products are "FOR RESEARCH USE ONLY. NOT FOR USE IN DIAGNOSTIC PROCEDURES"

Our Abpromise to you: Quality guaranteed and expert technical support

- Replacement or refund for products not performing as stated on the datasheet
- Valid for 12 months from date of delivery
- Response to your inquiry within 24 hours
- We provide support in Chinese, English, French, German, Japanese and Spanish
- Extensive multi-media technical resources to help you
- We investigate all quality concerns to ensure our products perform to the highest standards

If the product does not perform as described on this datasheet, we will offer a refund or replacement. For full details of the Abpromise, please visit <https://www.abcam.co.jp/abpromise> or contact our technical team.

Terms and conditions

- Guarantee only valid for products bought direct from Abcam or one of our authorized distributors