

# Anti-DC-SIGN antibody ab5715

**4 References** [画像数 4](#)

### 製品の概要

製品名	Anti-DC-SIGN antibody
製品の詳細	Rabbit polyclonal to DC-SIGN
由来種	Rabbit
アプリケーション	<b>適用あり:</b> ICC/IF, IHC-P, WB
種交差性	<b>交差種:</b> Human
免疫原	Synthetic peptide corresponding to Human DC-SIGN aa 384-404. (Peptide available as <b>ab6091</b> )
ポジティブ・コントロール	Human placenta tissue lysate.
特記事項	<p>The Life Science industry has been in the grips of a reproducibility crisis for a number of years. Abcam is leading the way in addressing this with our range of recombinant monoclonal antibodies and knockout edited cell lines for gold-standard validation. Please check that this product meets your needs before purchasing.</p> <p>If you have any questions, special requirements or concerns, please send us an inquiry and/or contact our Support team ahead of purchase. Recommended alternatives for this product can be found below, along with publications, customer reviews and Q&amp;As</p>

### 製品の特性

製品の状態	Liquid
保存方法	Shipped at 4°C. Store at +4°C.
バッファー	pH: 7.2 Preservative: 0.02% Sodium azide Constituent: PBS
精製度	Immunogen affinity purified
ポリ/モノ	ポリクローナル
アイソタイプ	IgG

### アプリケーション

The Abpromise guarantee

**Abpromise保証は、** 次のテスト済みアプリケーションにおけるab5715の使用に適用されます

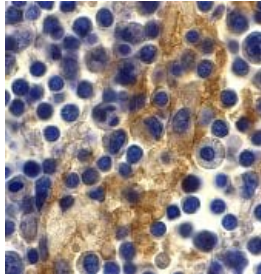
アプリケーションノートには、推奨の開始希釈率がありますが、適切な希釈率につきましてはご確認ください。

アプリケーション	Abreviews	特記事項
ICC/IF		Use a concentration of 20 µg/ml.
IHC-P		Use a concentration of 10 µg/ml.
WB		Use a concentration of 1 - 2 µg/ml. Detects a band of approximately 44 kDa.

## ターゲット情報

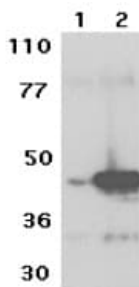
機能	<p>Pathogen-recognition receptor expressed on the surface of immature dendritic cells (DCs) and involved in initiation of primary immune response. Thought to mediate the endocytosis of pathogens which are subsequently degraded in lysosomal compartments. The receptor returns to the cell membrane surface and the pathogen-derived antigens are presented to resting T-cells via MHC class II proteins to initiate the adaptive immune response. Probably recognizes in a calcium-dependent manner high mannose N-linked oligosaccharides in a variety of pathogen antigens, including HIV-1 gp120, HIV-2 gp120, SIV gp120, ebolavirus glycoproteins, cytomegalovirus gB, HCV E2, dengue virus gE, Leishmania pifanoi LPG, Lewis-x antigen in Helicobacter pylori LPS, mannose in Klebsiella pneumoniae LPS, di-mannose and tri-mannose in Mycobacterium tuberculosis ManLAM and Lewis-x antigen in Schistosoma mansoni SEA.</p> <p>On DCs it is a high affinity receptor for ICAM2 and ICAM3 by binding to mannose-like carbohydrates. May act as a DC rolling receptor that mediates transendothelial migration of DC presursors from blood to tissues by binding endothelial ICAM2. Seems to regulate DC-induced T-cell proliferation by binding to ICAM3 on T-cells in the immunological synapse formed between DC and T-cells.</p>
組織特異性	Predominantly expressed in dendritic cells and in DC-residing tissues. Also found in placental macrophages, endothelial cells of placental vascular channels, peripheral blood mononuclear cells, and THP-1 monocytes.
配列類似性	Contains 1 C-type lectin domain.
ドメイン	The tandem repeat domain, also called neck domain, mediates oligomerization.
細胞内局在	Secreted and Cell membrane.

## 画像



Immunohistochemistry (Formalin/PFA-fixed paraffin-embedded sections) - Anti-DC-SIGN antibody (ab5715)

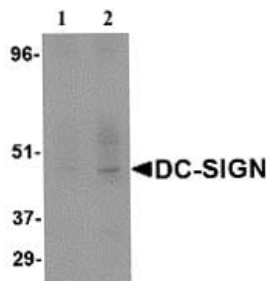
Immunohistochemistry of DC-SIGN in human lymph node tissue with DC-SIGN antibody at 10 µg/ml.



Western blot - Anti-DC-SIGN antibody (ab5715)

ab5715 at 0.5 µg /ml staining approximately 44kDa of human CD209 in Human placenta lysate by Western blot (ECL).

ab5715 at 0.5 µg /ml staining approximately 44kDa of human CD209 in Human placenta lysate by Western blot (ECL).



Western blot - Anti-DC-SIGN antibody (ab5715)

**Lane 1 :** Anti-DC-SIGN antibody (ab5715) at 1 µg/ml

**Lane 2 :** Anti-DC-SIGN antibody (ab5715) at 2 µg/ml

**All lanes :** Human placenta

**Observed band size:** 44 kDa

Immunocytochemistry/ Immunofluorescence - Anti-DC-SIGN antibody (ab5715)

Immunofluorescence of DC-SIGN in Human Lymph Node cells using ab5715 at 20 ug/ml.

**Please note:** All products are "FOR RESEARCH USE ONLY. NOT FOR USE IN DIAGNOSTIC PROCEDURES"

### Our Abpromise to you: Quality guaranteed and expert technical support

- Replacement or refund for products not performing as stated on the datasheet
- Valid for 12 months from date of delivery

- Response to your inquiry within 24 hours
- We provide support in Chinese, English, French, German, Japanese and Spanish
- Extensive multi-media technical resources to help you
- We investigate all quality concerns to ensure our products perform to the highest standards

If the product does not perform as described on this datasheet, we will offer a refund or replacement. For full details of the Abpromise, please visit <https://www.abcam.co.jp/abpromise> or contact our technical team.

#### **Terms and conditions**

---

- Guarantee only valid for products bought direct from Abcam or one of our authorized distributors