

Anti-DARC antibody ab124648

画像数 2

製品の概要

製品名	Anti-DARC antibody
製品の詳細	Rabbit polyclonal to DARC
由来種	Rabbit
アプリケーション	適用あり: IHC-P, ICC/IF
種交差性	交差種: Human
免疫原	A synthetic peptide from the N terminus of Human DARC.
ポジティブ・コントロール	Human thymus tissue; A549 cells.
特記事項	<p>The Life Science industry has been in the grips of a reproducibility crisis for a number of years. Abcam is leading the way in addressing this with our range of recombinant monoclonal antibodies and knockout edited cell lines for gold-standard validation. Please check that this product meets your needs before purchasing.</p> <p>If you have any questions, special requirements or concerns, please send us an inquiry and/or contact our Support team ahead of purchase. Recommended alternatives for this product can be found below, along with publications, customer reviews and Q&As</p>

製品の特性

製品の状態	Liquid
保存方法	Shipped at 4°C. Store at -20°C. Stable for 12 months at -20°C.
バッファー	pH: 7.40 Preservative: 0.02% Sodium azide Constituents: 49% PBS, 0.88% Sodium chloride, 50% Glycerol (glycerin, glycerine)
精製度	PBS (without Mg ²⁺ , Ca ²⁺)
ポリ/モノ	Protein A purified ポリクローナル
アイソタイプ	IgG

アプリケーション

The Abpromise guarantee

Abpromise保証は、次のテスト済みアプリケーションにおけるab124648の使用に適用されます

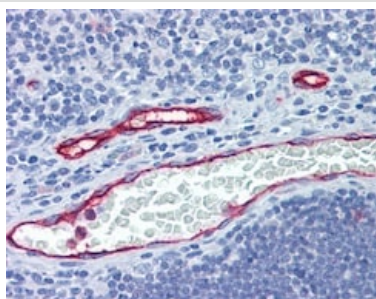
アプリケーションノートには、推奨の開始希釈率がありますが、適切な希釈率につきましてはご検討ください。

アプリケーション	Abreviews	特記事項
IHC-P		Use a concentration of 5 µg/ml.
ICC/IF		1/100 - 1/500.

ターゲット情報

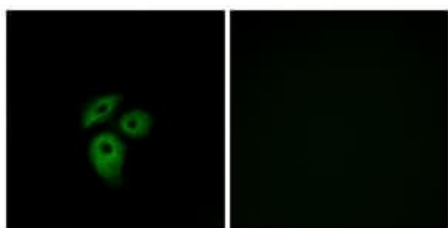
機能	Non-specific receptor for many chemokines such as IL-8, GRO, RANTES, MCP-1 and TARC. It is also the receptor for the human malaria parasites Plasmodium vivax and Plasmodium knowlesi.
組織特異性	Found in adult kidney, adult spleen, bone marrow and fetal liver. In particular, it is expressed along postcapillary venules throughout the body, except in the adult liver. Erythroid cells and postcapillary venule endothelium are the principle tissues expressing duffy. Fy(-A-B) individuals do not express duffy in the bone marrow, however they do, in postcapillary venule endothelium.
配列類似性	Belongs to the G-protein coupled receptor Duffy family.
細胞内局在	Membrane.

画像



Immunohistochemistry (Formalin/PFA-fixed paraffin-embedded sections) - Anti-DARC antibody (ab124648)

ab124648, at 5µg/ml, staining DARC in Formalin-fixed, Paraffin-embedded Human Thymus vessel tissue by Immunohistochemistry.



Immunocytochemistry/ Immunofluorescence - Anti-DARC antibody (ab124648)

ab124648, at 1/100 dilution, staining DARC in A549 cells by Immunofluorescence. The image on the right is treated with the synthesized peptide.

Please note: All products are "FOR RESEARCH USE ONLY. NOT FOR USE IN DIAGNOSTIC PROCEDURES"

Our Abpromise to you: Quality guaranteed and expert technical support

- Replacement or refund for products not performing as stated on the datasheet
- Valid for 12 months from date of delivery
- Response to your inquiry within 24 hours

- We provide support in Chinese, English, French, German, Japanese and Spanish
- Extensive multi-media technical resources to help you
- We investigate all quality concerns to ensure our products perform to the highest standards

If the product does not perform as described on this datasheet, we will offer a refund or replacement. For full details of the Abpromise, please visit <https://www.abcam.co.jp/abpromise> or contact our technical team.

Terms and conditions

- Guarantee only valid for products bought direct from Abcam or one of our authorized distributors