




Anti-Dab1 (phospho Y232) antibody ab78200

★★★★★ [1 Abreviews](#) [2 References](#) [画像数 1](#)

製品の概要

製品名	Anti-Dab1 (phospho Y232) antibody
製品の詳細	Rabbit polyclonal to Dab1 (phospho Y232)
由来種	Rabbit
アプリケーション	適用あり: WB
種交差性	交差種: Human 交差が予測される動物種: Mouse, Rat 
免疫原	Synthetic peptide corresponding to Human Dab1 (phospho Y232).  Run BLAST with Expasy  Run BLAST with NCBI
ポジティブ・コントロール	Extracts from LOVO cells.
特記事項	<p>The Life Science industry has been in the grips of a reproducibility crisis for a number of years. Abcam is leading the way in addressing this with our range of recombinant monoclonal antibodies and knockout edited cell lines for gold-standard validation. Please check that this product meets your needs before purchasing.</p> <p>If you have any questions, special requirements or concerns, please send us an inquiry and/or contact our Support team ahead of purchase. Recommended alternatives for this product can be found below, along with publications, customer reviews and Q&As</p>

製品の特性

製品の状態	Liquid
保存方法	Shipped at 4°C. Upon delivery aliquot and store at -20°C. Avoid freeze / thaw cycles.
バッファー	pH: 7 Preservative: 0.02% Sodium azide Constituents: 50% Glycerol, 0.87% Sodium chloride, PBS
精製度	Immunogen affinity purified
特記事項 (精製)	The antibody was affinity-purified from rabbit antiserum by affinity-chromatography using epitope-specific phosphopeptide. The antibody against non-phosphopeptide was removed by chromatography using non-phosphopeptide corresponding to the phosphorylation site.
ポリ/モノ	ポリクローナル
アイソタイプ	IgG

アプリケーション

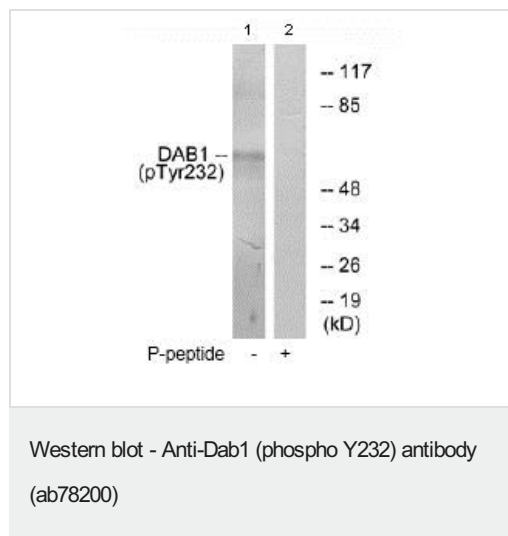
The Abpromise guarantee **Abpromise保証は、** 次のテスト済みアプリケーションにおけるab78200の使用に適用されます
アプリケーションノートには、推奨の開始希釈率がありますが、適切な希釈率につきましてはご検討ください。

アプリケーション	Abreviews	特記事項
WB		1/500 - 1/1000. Detects a band of approximately 67 kDa (predicted molecular weight: 67 kDa).

ターゲット情報

機能	Adapter molecule functioning in neural development. May regulate SIAH1 activity.
配列類似性	Contains 1 PID domain.
ドメイン	The PID domain specifically binds to the Asn-Pro-Xaa-Tyr(P) motif found in many tyrosine-phosphorylated proteins.
翻訳後修飾	Phosphorylated on Tyr-198 and Tyr-220 upon reelin induction in embryonic neurons (By similarity). Also phosphorylated on Ser-524 independently of reelin signaling.

画像



All lanes : Anti-Dab1 (phospho Y232) antibody (ab78200) at 1/500 dilution

Lane 1 : Extracts from LOVO cells

Lane 2 : Extracts from LOVO cells plus 5µg immunizing peptide

Lysates/proteins at 5 µg per lane.

Predicted band size: 67 kDa

Observed band size: 67 kDa

Please note: All products are "FOR RESEARCH USE ONLY. NOT FOR USE IN DIAGNOSTIC PROCEDURES"

Our Abpromise to you: Quality guaranteed and expert technical support

- Replacement or refund for products not performing as stated on the datasheet
- Valid for 12 months from date of delivery
- Response to your inquiry within 24 hours
- We provide support in Chinese, English, French, German, Japanese and Spanish

- Extensive multi-media technical resources to help you
- We investigate all quality concerns to ensure our products perform to the highest standards

If the product does not perform as described on this datasheet, we will offer a refund or replacement. For full details of the Abpromise, please visit <https://www.abcam.co.jp/abpromise> or contact our technical team.

Terms and conditions

- Guarantee only valid for products bought direct from Abcam or one of our authorized distributors