

Anti-Cytosolic Phospholipase A2 (phospho S505) antibody ab53105

15 References **画像数 3**

製品の概要

製品名	Anti-Cytosolic Phospholipase A2 (phospho S505) antibody
製品の詳細	Rabbit polyclonal to Cytosolic Phospholipase A2 (phospho S505)
由来種	Rabbit
アプリケーション	適用あり: WB, IHC-P, ICC/IF
種交差性	交差種: Human
免疫原	Synthetic peptide corresponding to Human Cytosolic Phospholipase A2 (phospho S505). Sequence: P-L-Sp-P-L

 [Run BLAST with](#)

 [Run BLAST with](#)

特記事項

The Life Science industry has been in the grips of a reproducibility crisis for a number of years. Abcam is leading the way in addressing this with our range of recombinant monoclonal antibodies and knockout edited cell lines for gold-standard validation. Please check that this product meets your needs before purchasing.

If you have any questions, special requirements or concerns, please send us an inquiry and/or contact our Support team ahead of purchase. Recommended alternatives for this product can be found below, along with publications, customer reviews and Q&As

製品の特性

製品の状態	Liquid
保存方法	Shipped at 4°C. Store at -20°C. Stable for 12 months at -20°C.
バッファー	pH: 7.40 Preservative: 0.02% Sodium azide Constituents: 50% Glycerol (glycerin, glycerine), 0.87% Sodium chloride, PBS
	Without Mg+2 and Ca+2
精製度	Immunogen affinity purified
特記事項(精製)	ab53105 was affinity purified from rabbit antiserum by affinity chromatography using epitope-specific phosphopeptide. The antibody against non-phosphopeptide was removed by chromatography using non-phosphopeptide corresponding to the phosphorylation site.

ポリモノ
アイソタイプ

ポリクローナル
IgG

アプリケーション

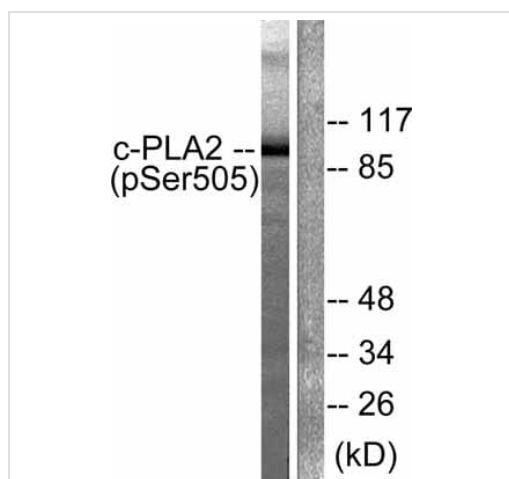
The Abpromise guarantee Abpromise保証は、次のテスト済みアプリケーションにおけるab53105の使用に適用されます
アプリケーションノートには、推奨の開始希釈率がありますが、適切な希釈率につきましてはご検討ください。

アプリケーション	Abreviews	特記事項
WB		1/300 - 1/1000. Detects a band of approximately 110 kDa (predicted molecular weight: 85 kDa).
IHC-P		Use at an assay dependent concentration.
ICC/IF		Use a concentration of 5 µg/ml.

ターゲット情報

機能	Selectively hydrolyzes arachidonyl phospholipids in the sn-2 position releasing arachidonic acid. Together with its lysophospholipid activity, it is implicated in the initiation of the inflammatory response.
組織特異性	Expressed in various tissues such as macrophages, platelets, neutrophils, fibroblasts and lung endothelium.
配列類似性	Contains 1 C2 domain. Contains 1 PLA2c domain.
ドメイン	The N-terminal C2 domain associates with lipid membranes upon calcium binding. It modulates enzyme activity by presenting the active site to its substrate in response to elevations of cytosolic Ca(2+).
翻訳後修飾	Activated by phosphorylation at both Ser-505 and Ser-727.
細胞内局在	Cytoplasm. Cytoplasmic vesicle. Translocates to membrane vesicles in a calcium-dependent fashion.

画像



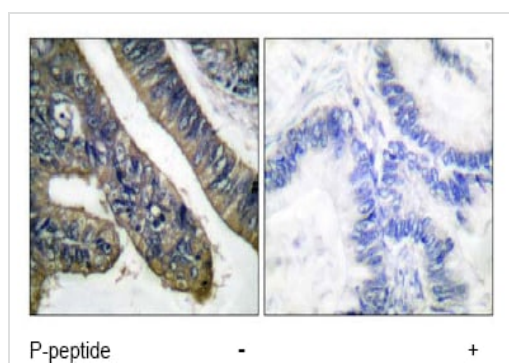
Western blot - Anti-Cytosolic Phospholipase A2 (phospho S505) antibody (ab53105)

All lanes : Anti-Cytosolic Phospholipase A2 (phospho S505) antibody (ab53105) at 1/300 dilution

Lane 1 : extracts from HeLa cells treated with TNF- α (20ng/ml, 30mins)

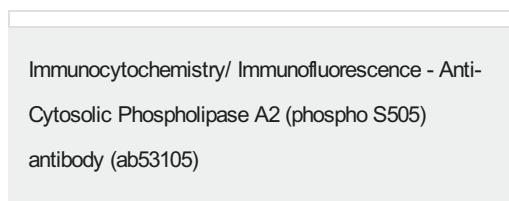
Lane 2 : extracts from HeLa cells treated with TNF- α (20ng/ml, 30mins) with immunising peptide

Predicted band size: 85 kDa



Immunohistochemistry (Formalin/PFA-fixed paraffin-embedded sections) - Anti-Cytosolic Phospholipase A2 (phospho S505) antibody (ab53105)

ab53105 at 1/50 dilution staining Cytosolic Phospholipase A2 in human colon carcinoma by Immunohistochemistry, Paraffin embedded tissue, in the absence and presence of the immunising peptide.



ICC/IF image of ab53105 stained MCF7 cells. The cells were 4% formaldehyde fixed (10 min) and then incubated in 1%BSA / 10% normal goat serum / 0.3M glycine in 0.1% PBS-Tween for 1h to permeabilise the cells and block non-specific protein-protein interactions. The cells were then incubated with the antibody (ab53105, 5 μ g/ml) overnight at +4°C. The secondary antibody (green) was [ab96899](#), DyLight® 488 goat anti-rabbit IgG (H+L)

used at a 1/250 dilution for 1h. Alexa Fluor® 594 WGA was used to label plasma membranes (red) at a 1/200 dilution for 1h. DAPI was used to stain the cell nuclei (blue) at a concentration of 1.43µM.

Please note: All products are "FOR RESEARCH USE ONLY. NOT FOR USE IN DIAGNOSTIC PROCEDURES"

Our Abpromise to you: Quality guaranteed and expert technical support

- Replacement or refund for products not performing as stated on the datasheet
- Valid for 12 months from date of delivery
- Response to your inquiry within 24 hours

- We provide support in Chinese, English, French, German, Japanese and Spanish
- Extensive multi-media technical resources to help you
- We investigate all quality concerns to ensure our products perform to the highest standards

If the product does not perform as described on this datasheet, we will offer a refund or replacement. For full details of the Abpromise, please visit <https://www.abcam.co.jp/abpromise> or contact our technical team.

Terms and conditions

- Guarantee only valid for products bought direct from Abcam or one of our authorized distributors