

Anti-Cytosolic Phospholipase A2 antibody ab73406

KO 評価済

2 References 画像数 4

製品の概要

製品名	Anti-Cytosolic Phospholipase A2 antibody
製品の詳細	Rabbit polyclonal to Cytosolic Phospholipase A2
由来種	Rabbit
アプリケーション	適用あり: IHC-P, WB, ICC/IF
種交差性	交差種: Human 交差が予測される動物種: Mouse, Rat, Rabbit, Horse, Cow, Dog, Orangutan 
免疫原	Synthetic peptide corresponding to Human Cytosolic Phospholipase A2 aa 700 to the C-terminus conjugated to keyhole limpet haemocyanin. (Peptide available as ab85814 , ab86259)
ポジティブ・コントロール	This antibody gave a positive signal in HeLa Whole Cell Lysate - Bleomycin Treated (40U/ml)
特記事項	<p>The Life Science industry has been in the grips of a reproducibility crisis for a number of years. Abcam is leading the way in addressing this with our range of recombinant monoclonal antibodies and knockout edited cell lines for gold-standard validation. Please check that this product meets your needs before purchasing.</p> <p>If you have any questions, special requirements or concerns, please send us an inquiry and/or contact our Support team ahead of purchase. Recommended alternatives for this product can be found below, along with publications, customer reviews and Q&As</p>

製品の特性

製品の状態	Liquid
保存方法	Shipped at 4°C. Store at +4°C short term (1-2 weeks). Upon delivery aliquot. Store at -20°C or -80°C. Avoid freeze / thaw cycle.
バッファー	pH: 7.40 Preservative: 0.02% Sodium azide Constituent: PBS
	Batches of this product that have a concentration < 1mg/ml may have BSA added as a stabilising agent. If you would like information about the formulation of a specific lot, please contact our scientific support team who will be happy to help.

精製度	Immunogen affinity purified
ポリ/モノ	ポリクローナル
アイソタイプ	IgG

アプリケーション

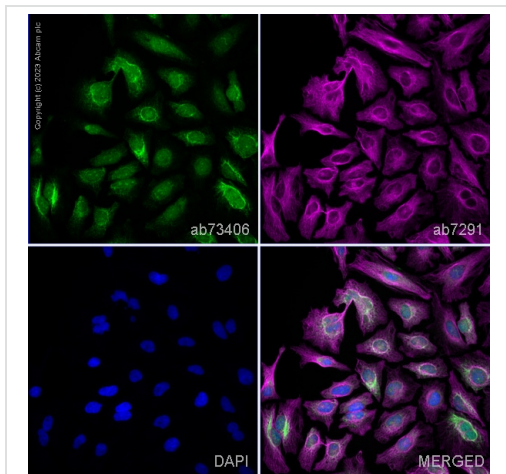
The Abpromise guarantee **Abpromise保証は、次のテスト済みアプリケーションにおけるab73406の使用に適用されます**
 アプリケーションノートには、推奨の開始希釈率がありますが、適切な希釈率につきましてはご検討ください。

アプリケーション	Abreviews	特記事項
IHC-P		Use a concentration of 5 µg/ml. Perform heat mediated antigen retrieval before commencing with IHC staining protocol.
WB		Use a concentration of 1 µg/ml. Detects a band of approximately 100 kDa (predicted molecular weight: 85 kDa).
ICC/IF		Use a concentration of 1 µg/ml.

ターゲット情報

機能	Selectively hydrolyzes arachidonyl phospholipids in the sn-2 position releasing arachidonic acid. Together with its lysophospholipid activity, it is implicated in the initiation of the inflammatory response.
組織特異性	Expressed in various tissues such as macrophages, platelets, neutrophils, fibroblasts and lung endothelium.
配列類似性	Contains 1 C2 domain. Contains 1 PLA2c domain.
ドメイン	The N-terminal C2 domain associates with lipid membranes upon calcium binding. It modulates enzyme activity by presenting the active site to its substrate in response to elevations of cytosolic Ca(2+).
翻訳後修飾	Activated by phosphorylation at both Ser-505 and Ser-727.
細胞内局在	Cytoplasm. Cytoplasmic vesicle. Translocates to membrane vesicles in a calcium-dependent fashion.

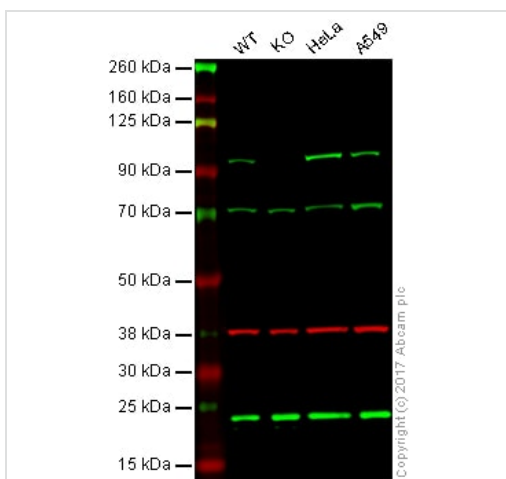
画像



Immunocytochemistry/ Immunofluorescence - Anti-Cytosolic Phospholipase A2 antibody (ab73406)

ab73406 staining Cytosolic Phospholipase A2 in HeLa cells. The cells were fixed with 4% paraformaldehyde (10 min), permeabilized with 0.1% PBS-Triton X-100 for 5 minutes and then blocked with 1% BSA/10% normal goat serum/0.3M glycine in 0.1% PBS-Tween for 1h. The cells were then incubated overnight at 4°C with ab73406 at 1 µg/ml and **ab7291**, Mouse monoclonal [DM1A] to alpha Tubulin - Loading Control. Cells were then incubated with **ab150081**, Goat polyclonal Secondary Antibody to Rabbit IgG - H&L (Alexa Fluor® 488), pre-adsorbed at 1/1000 dilution (shown in green) and **ab150120**, Goat polyclonal Secondary Antibody to Mouse IgG - H&L (Alexa Fluor® 594), pre-adsorbed at 1/1000 dilution (shown in pseudocolour magenta). Nuclear DNA was labelled with DAPI (shown in blue).

Image was acquired with a high-content analyser (Operetta CLS, Perkin Elmer) and a maximum intensity projection of confocal sections is shown.



Western blot - Anti-Cytosolic Phospholipase A2 antibody (ab73406)

Lane 1: Wild-type HAP1 whole cell lysate (20 µg)

Lane 2: Cytosolic Phospholipase A2 knockout HAP1 whole cell lysate (20 µg)

Lane 3: HeLa whole cell lysate (20 µg)

Lane 4: A549 whole cell lysate (20 µg)

Lanes 1 - 4: Merged signal (red and green). Green - ab73406 observed at 90 kDa. Red - loading control, **ab8245**, observed at 37 kDa.

ab73406 was shown to specifically recognize

Cytosolic Phospholipase A2 in wild-type HAP1 cells along with additional cross-reactive bands. No band was observed when Cytosolic Phospholipase A2 knockout samples were examined. Wild-type and Cytosolic Phospholipase A2 knockout samples were subjected to SDS-PAGE. Ab73406 and **ab8245** (Mouse anti GAPDH loading control) were incubated overnight at 4°C at 1 µg/ml and 1/20000 dilution respectively. Blots were developed with Goat anti-Rabbit IgG H&L (IRDye® 800CW) preabsorbed **ab216773** and Goat anti-Mouse IgG H&L (IRDye® 680RD) preabsorbed **ab216776** secondary antibodies at 1/20000 dilution for 1 hour at

room temperature before imaging.

Anti-Cytosolic Phospholipase A2 antibody (ab73406) at 1 µg/ml +
HeLa Whole Cell Lysate - Bleomycin Treated (40U/ml) at 10 µg

Secondary

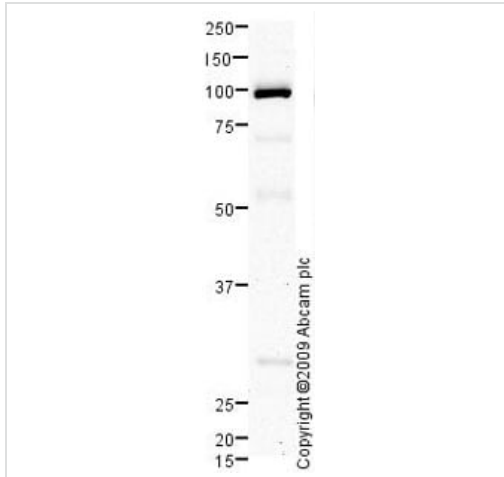
Goat polyclonal to Rabbit IgG - H&L - Pre-Adsorbed (HRP) at
1/3000 dilution

Developed using the ECL technique.

Performed under reducing conditions.

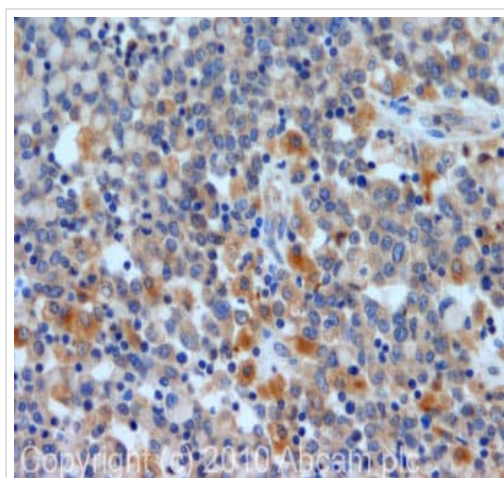
Predicted band size: 85 kDa

Observed band size: 100 kDa



Western blot - Anti-Cytosolic Phospholipase A2
antibody (ab73406)

The 100kDa band is comparable to molecular weights seen with
other commercially available antibodies to Cytosolic Phospholipase
A2



Immunohistochemistry (Formalin/PFA-fixed paraffin-
embedded sections) - Anti-Cytosolic Phospholipase
A2 antibody (ab73406)

IHC image of Cytosolic Phospholipase A2 staining in human colon
carcinoma formalin fixed paraffin embedded tissue section,
performed on a Leica Bond™ system using the standard protocol
F. The section was pre-treated using heat mediated antigen
retrieval with sodium citrate buffer (pH6, epitope retrieval solution 1)
for 20 mins. The section was then incubated with ab73406, 5µg/ml,
for 15 mins at room temperature and detected using an HRP
conjugated compact polymer system. DAB was used as the
chromogen. The section was then counterstained with haematoxylin
and mounted with DPX.

Please note: All products are "FOR RESEARCH USE ONLY. NOT FOR USE IN DIAGNOSTIC PROCEDURES"

Our Abpromise to you: Quality guaranteed and expert technical support

- Replacement or refund for products not performing as stated on the datasheet

- Valid for 12 months from date of delivery
- Response to your inquiry within 24 hours
- We provide support in Chinese, English, French, German, Japanese and Spanish
- Extensive multi-media technical resources to help you
- We investigate all quality concerns to ensure our products perform to the highest standards

If the product does not perform as described on this datasheet, we will offer a refund or replacement. For full details of the Abpromise, please visit <https://www.abcam.co.jp/abpromise> or contact our technical team.

Terms and conditions

- Guarantee only valid for products bought direct from Abcam or one of our authorized distributors