

Anti-Cytomegalovirus Glycoprotein B antibody [HCMV37] ab54023

6 References [画像数 1](#)

製品の概要

製品名	Anti-Cytomegalovirus Glycoprotein B antibody [HCMV37]
製品の詳細	Mouse monoclonal [HCMV37] to Cytomegalovirus Glycoprotein B
由来種	Mouse
特異性	This antibody is specific for Cytomegalovirus glycoprotein B late neutralizing antigen. Reacts with MRC-5 infected cells but not uninfected cells.
アプリケーション	適用あり: ELISA, ICC/IF, IHC-Fr, Neutralising
種交差性	交差種: Human cytomegalovirus
免疫原	Human CMV extracts
ポジティブ・コントロール	ICC/IF: monocyte-derived dendritic cells infected with Human cytomegalovirus
特記事項	<p>The Life Science industry has been in the grips of a reproducibility crisis for a number of years. Abcam is leading the way in addressing this with our range of recombinant monoclonal antibodies and knockout edited cell lines for gold-standard validation. Please check that this product meets your needs before purchasing.</p> <p>If you have any questions, special requirements or concerns, please send us an inquiry and/or contact our Support team ahead of purchase. Recommended alternatives for this product can be found below, along with publications, customer reviews and Q&As</p>

製品の特性

製品の状態	Liquid
保存方法	Shipped at 4°C. Store at +4°C short term (1-2 weeks). Upon delivery aliquot. Store at -20°C long term.
バッファー	Preservative: 0.09% Sodium azide Constituent: PBS
精製度	Protein A purified
ポリ/モノ	モノクローナル
クローン名	HCMV37
アイソタイプ	IgG2a

アプリケーション

The Abpromise guarantee Abpromise保証は、次のテスト済みアプリケーションにおけるab54023の使用に適用されます
アプリケーションノートには、推奨の開始希釈率がありますが、適切な希釈率につきましてはご検討ください。

アプリケーション	Abreviews	特記事項
ELISA		
ICC/IF		
IHC-Fr		
Neutralising		

追加情報

ELISA: Use at an assay dependent dilution.
ICC/IF: Use at an assay dependent dilution (CMV infected cells).
IHC-Fr: Use at an assay dependent dilution (CMV infected cells).
Neut: Use at an assay dependent dilution.

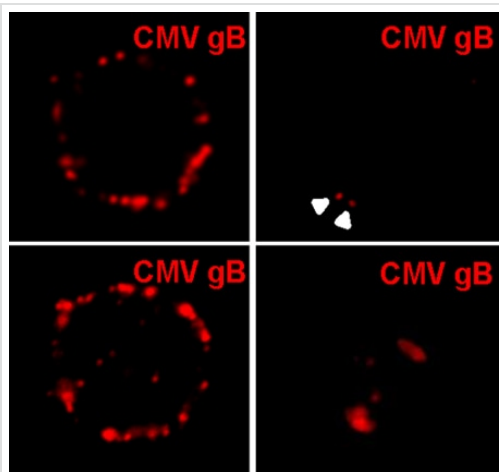
Not yet tested in other applications.
Optimal dilutions/concentrations should be determined by the end user.

ターゲット情報

関連性 Human cytomegalovirus (HCMV) glycoprotein B (gB) is an abundant virion envelope protein that has been shown to be essential for the infectivity of HCMV. HCMV gB is also one of the most immunogenic virus-encoded proteins, and a significant fraction of virus neutralizing antibodies are directed at gB.

細胞内局在 Virus envelope.

画像



Immunocytochemistry/ Immunofluorescence - Anti-Cytomegalovirus Glycoprotein B antibody [HCMV37] (ab54023)

Image from Haspot F et al., PLoS One. 2012;7(4):e34795. Epub 2012 Apr 9. Fig 2.; doi:10.1371/journal.pone.0034795; April 9, 2012, PLoS ONE 7(4): e34795.

ab54023, staining Cytomegalovirus Glycoprotein B in monocyte-derived dendritic cells infected with Human cytomegalovirus (VHL/E strain), cultured for 3 hours (left panels) and 24 hours (right panels), by Immunocytochemistry/ Immunofluorescence.

Cells were fixed with paraformaldehyde and permeabilized with 0.2% Triton X-100 in PBS for 10 minutes at room temperature.

Samples were incubated with primary antibody and an AlexaFluor®568-conjugated goat anti-mouse monoclonal IgG was used as the secondary antibody.

Please note: All products are "FOR RESEARCH USE ONLY. NOT FOR USE IN DIAGNOSTIC PROCEDURES"

Our Abpromise to you: Quality guaranteed and expert technical support

- Replacement or refund for products not performing as stated on the datasheet
- Valid for 12 months from date of delivery
- Response to your inquiry within 24 hours
- We provide support in Chinese, English, French, German, Japanese and Spanish
- Extensive multi-media technical resources to help you
- We investigate all quality concerns to ensure our products perform to the highest standards

If the product does not perform as described on this datasheet, we will offer a refund or replacement. For full details of the Abpromise, please visit <https://www.abcam.co.jp/abpromise> or contact our technical team.

Terms and conditions

- Guarantee only valid for products bought direct from Abcam or one of our authorized distributors