

# Anti-Cytomegalovirus Glycoprotein B antibody [2F12] ab6499

★★★★★ [1 Abreviews](#) [14 References](#) [画像数 5](#)

### 製品の概要

製品名	Anti-Cytomegalovirus Glycoprotein B antibody [2F12]
製品の詳細	Mouse monoclonal [2F12] to Cytomegalovirus Glycoprotein B
由来種	Mouse
アプリケーション	<b>適用あり:</b> WB, ELISA, ICC/IF
種交差性	<b>交差種:</b> Human cytomegalovirus
免疫原	Tissue, cells or virus corresponding to Human Cytomegalovirus Glycoprotein B. Human Cytomegalovirus (AD169) infected human fibroblast cells
エピトープ	Epitope has not been mapped.
特記事項	<p>The Life Science industry has been in the grips of a reproducibility crisis for a number of years. Abcam is leading the way in addressing this with our range of recombinant monoclonal antibodies and knockout edited cell lines for gold-standard validation. Please check that this product meets your needs before purchasing.</p> <p>If you have any questions, special requirements or concerns, please send us an inquiry and/or contact our Support team ahead of purchase. Recommended alternatives for this product can be found below, along with publications, customer reviews and Q&amp;As</p>

### 製品の特性

製品の状態	Liquid
保存方法	Shipped at 4°C. Upon delivery aliquot and store at -20°C or -80°C. Avoid repeated freeze / thaw cycles.
バッファー	pH: 7.40 Constituent: PBS
精製度	Protein A purified
ポリ/モノ	モノクローナル
クローン名	2F12
ミエローマ	NS1/1-Ag4-1
アイソタイプ	IgG1
軽鎖の種類	kappa

## アプリケーション

The Abpromise guarantee Abpromise保証は、次のテスト済みアプリケーションにおけるab6499の使用に適用されます  
アプリケーションノートには、推奨の開始希釈率がありますが、適切な希釈率につきましてはご確認ください。

アプリケーション	Abreviews	特記事項
WB	★★★★★ (1)	
ELISA		
ICC/IF		

### 追加情報

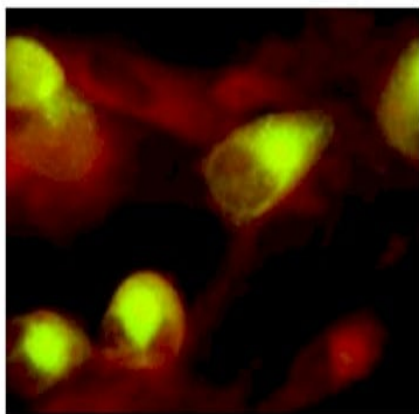
Immunofluorescence titer 1+ @ 1:12,800, IFA is tested with acetone fixation.  
ELISA titer 0.100 @ 1:102,400  
Western Blot > 1:4,000

## ターゲット情報

**関連性** Human cytomegalovirus (HCMV) glycoprotein B (gB) is an abundant virion envelope protein that has been shown to be essential for the infectivity of HCMV. HCMV gB is also one of the most immunogenic virus-encoded proteins, and a significant fraction of virus neutralizing antibodies are directed at gB.

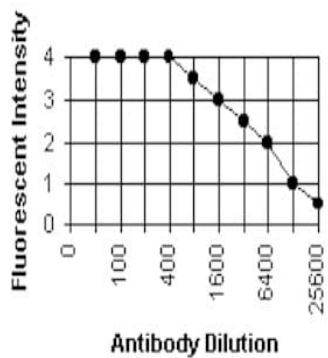
**細胞内局在** Virus envelope.

## 画像



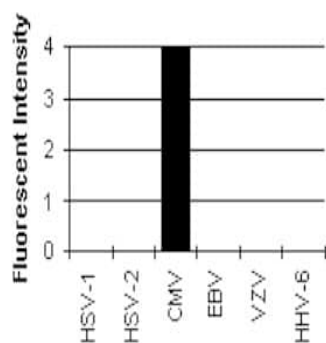
See protocol for procedure. Procedure uses 10-well CMV slides and anti-Mouse-FITC F(ab')<sub>2</sub> w/ counterstain.

Immunocytochemistry/ Immunofluorescence - Anti-Cytomegalovirus Glycoprotein B antibody [2F12] (ab6499)



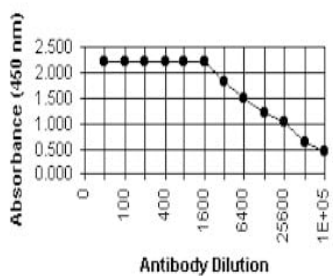
See protocol for procedure. Procedure uses 10-well CMV slides and anti-Mouse-FITC F(ab')<sub>2</sub> w/ counterstain.

Immunocytochemistry/ Immunofluorescence - Anti-Cytomegalovirus Glycoprotein B antibody [2F12] (ab6499)



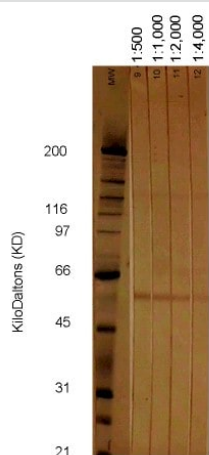
Determined by IFA (see protocol section) at an antibody dilution of 1:100 with anti-Mouse-FITC F(ab')<sub>2</sub> w/ counterstain.

Immunocytochemistry/ Immunofluorescence - Anti-Cytomegalovirus Glycoprotein B antibody [2F12] (ab6499)



ELISA - Anti-Cytomegalovirus Glycoprotein B antibody [2F12] (ab6499)

See protocol for procedure. Antigen is CMV Infected Cell Extract coated at a dilution of 1:100.



Western blot - Anti-Cytomegalovirus Glycoprotein B antibody [2F12] (ab6499)

See protocol for procedure. Antigen is CMV Infected Cell Extract at 10 µg/cm.

See protocol for procedure. Antigen is CMV Infected Cell Extract at 10 µg/cm.

**Please note:** All products are "FOR RESEARCH USE ONLY. NOT FOR USE IN DIAGNOSTIC PROCEDURES"

### Our Abpromise to you: Quality guaranteed and expert technical support

- Replacement or refund for products not performing as stated on the datasheet
- Valid for 12 months from date of delivery
- Response to your inquiry within 24 hours
- We provide support in Chinese, English, French, German, Japanese and Spanish
- Extensive multi-media technical resources to help you
- We investigate all quality concerns to ensure our products perform to the highest standards

If the product does not perform as described on this datasheet, we will offer a refund or replacement. For full details of the Abpromise, please visit <https://www.abcam.co.jp/abpromise> or contact our technical team.

## **Terms and conditions**

---

- Guarantee only valid for products bought direct from Abcam or one of our authorized distributors