

### Anti-Cytokeratin antibody [MNF116] ab756

★★★★★ [2 Abreviews](#) [12 References](#) [画像数 5](#)

#### 製品の概要

---

製品名	Anti-Cytokeratin antibody [MNF116]
製品の詳細	Mouse monoclonal [MNF116] to Cytokeratin
由来種	Mouse
アプリケーション	<b>適用あり:</b> IHC-Fr, IHC-P, Flow Cyt, ICC/IF
種交差性	<b>交差種:</b> Human
免疫原	Tissue, cells or virus corresponding to Cytokeratin. Crude extract of splenic cells from a nude mouse engrafted with MCF-7 cells.
特記事項	<p>The Life Science industry has been in the grips of a reproducibility crisis for a number of years. Abcam is leading the way in addressing this with our range of recombinant monoclonal antibodies and knockout edited cell lines for gold-standard validation. Please check that this product meets your needs before purchasing.</p> <p>If you have any questions, special requirements or concerns, please send us an inquiry and/or contact our Support team ahead of purchase. Recommended alternatives for this product can be found below, along with publications, customer reviews and Q&amp;As</p>

#### 製品の特性

---

製品の状態	Liquid
保存方法	Shipped at 4°C. Store at +4°C short term (1-2 weeks). Store at -20°C or -80°C. Avoid freeze / thaw cycle.
バッファー	pH: 7.30 Preservative: 0.05% Sodium azide Constituents: Tissue culture supernatant, 1% BSA
精製度	Tissue culture supernatant
ポリ/モノ	モノクローナル
クローン名	MNF116
アイソタイプ	IgG1
軽鎖の種類	kappa

#### アプリケーション

**The Abpromise guarantee**      **Abpromise保証は、次のテスト済みアプリケーションにおけるab756の使用に適用されます**  
 アプリケーションノートには、推奨の開始希釈率がありますが、適切な希釈率につきましてはご検討ください。

アプリケーション	Abreviews	特記事項
IHC-Fr	★★★★★ (1)	Use at an assay dependent concentration.
IHC-P	★★★★☆ (1)	Use at an assay dependent concentration. This antibody may be diluted to a titer of 1:25-1:50 in an ABC method. Staining Protocol: We suggest an incubation period of 30-60 minutes at room temperature. However, depending upon the fixation conditions and the staining system employed, optimal incubation conditions and antibody dilutions should be determined by the user. Enzymatic antigen retrieval of paraffin
Flow Cyt		Use 1µg for 10 <sup>6</sup> cells. <b>ab170190</b> - Mouse monoclonal IgG1, is suitable for use as an isotype control with this antibody.
ICC/IF		Use at an assay dependent concentration.

## ターゲット情報

<b>機能</b>	May regulate the activity of kinases such as PKC and SRC via binding to integrin beta-1 (ITB1) and the receptor of activated protein kinase C (RACK1/GNB2L1).
<b>組織特異性</b>	The source of this protein is neonatal foreskin. The 67-kDa type II keratins are expressed in terminally differentiating epidermis.
<b>関連疾患</b>	<p>Defects in KRT1 are a cause of bullous congenital ichthyosiform erythroderma (BCIE) [MIM:113800]; also known as epidermolytic hyperkeratosis (EHK) or bullous erythroderma ichthyosiformis congenita of Brocq. BCIE is an autosomal dominant skin disorder characterized by widespread blistering and an ichthyotic erythroderma at birth that persist into adulthood. Histologically there is a diffuse epidermolytic degeneration in the lower spinous layer of the epidermis. Within a few weeks from birth, erythroderma and blister formation diminish and hyperkeratoses develop.</p> <p>Defects in KRT1 are the cause of ichthyosis hystrix Curth-Macklin type (IHCM) [MIM:146590]. IHCM is a genodermatosis with severe verrucous hyperkeratosis. Affected individuals manifest congenital verrucous black scale on the scalp, neck, and limbs with truncal erythema, palmoplantar keratoderma and keratoses on the lips, ears, nipples and buttocks.</p> <p>Defects in KRT1 are a cause of palmoplantar keratoderma non-epidermolytic (NEPPK) [MIM:600962]. NEPPK is a dermatological disorder characterized by focal palmoplantar keratoderma with oral, genital, and follicular lesions.</p> <p>Defects in KRT1 are a cause of ichthyosis annular epidermolytic (AEI) [MIM:607602]; also known as cyclic ichthyosis with epidermolytic hyperkeratosis. AEI is a skin disorder resembling bullous congenital ichthyosiform erythroderma. Affected individuals present with bullous ichthyosis in early childhood and hyperkeratotic lichenified plaques in the flexural areas and extensor surfaces at later ages. The feature that distinguishes AEI from BCIE is dramatic episodes of flares of annular polycyclic plaques with scale, which coalesce to involve most of the body surface and can persist for several weeks or even months.</p> <p>Defects in KRT1 are the cause of palmoplantar keratoderma striate type 3 (SPPK3)</p>

[MIM:607654]; also known as keratosis palmoplantaris striata III. SPPK3 is a dermatological disorder affecting palm and sole skin where stratum corneum and epidermal layers are thickened. There is no involvement of non-palmoplantar skin, and both hair and nails are normal.

**配列類似性**

Belongs to the intermediate filament family.

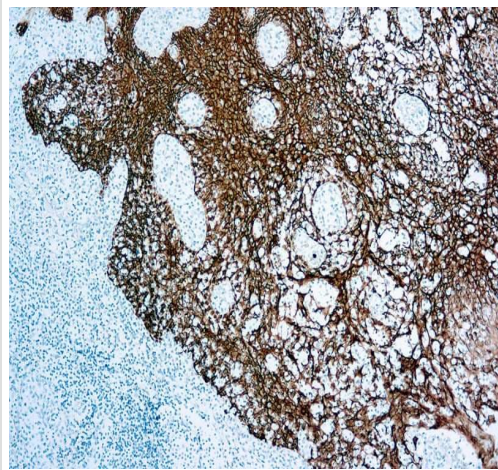
**翻訳後修飾**

Undergoes deimination of some arginine residues (citrullination).

**細胞内局在**

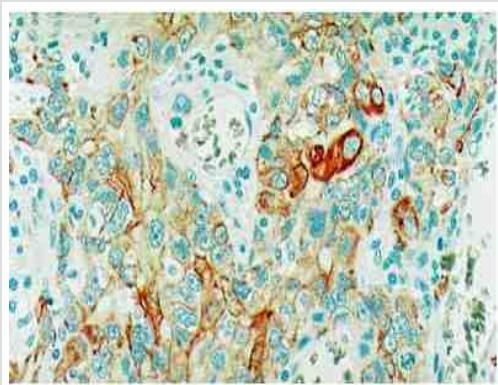
Cell membrane. Located on plasma membrane of neuroblastoma NMB7 cells.

**画像**



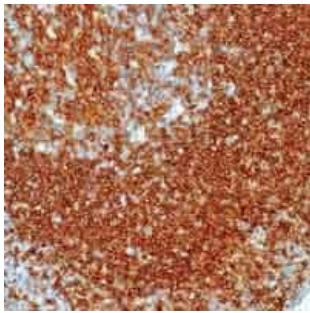
Formalin fixed paraffin embedded human tonsil tissue, staining Cytokeratin with ab756 in immunohistochemical analysis

Immunohistochemistry (Formalin/PFA-fixed paraffin-embedded sections) - Anti-Cytokeratin antibody [MNF116] (ab756)



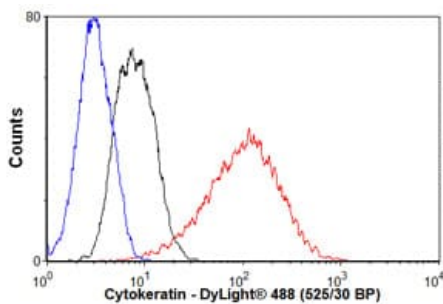
Formalin fixed paraffin embedded human lung carcinoma stained with Cytokeratin using ABC and AEC chromogen.

Immunohistochemistry (Formalin/PFA-fixed paraffin-embedded sections) - Anti-Cytokeratin antibody [MNF116] (ab756)



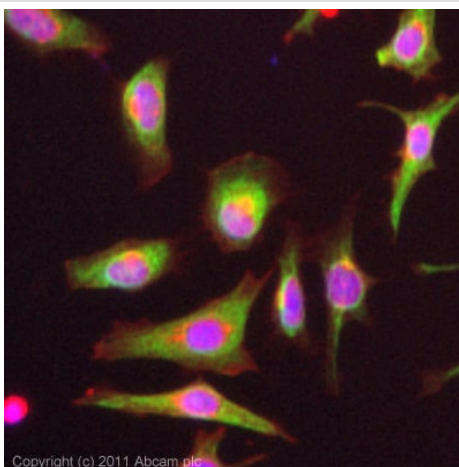
Immunohistochemistry (Formalin/PFA-fixed paraffin-embedded sections) - Anti-Cytokeratin antibody [MNF116] (ab756)

ab756 staining human tonsil by IHC-P.



Flow Cytometry - Anti-Cytokeratin antibody [MNF116] (ab756)

Overlay histogram showing MCF7 cells stained with ab756 (red line). The cells were fixed with 4% paraformaldehyde (10 min) and then permeabilized with 0.1% PBS-Tween for 20 min. The cells were then incubated in 1x PBS / 10% normal goat serum / 0.3M glycine to block non-specific protein-protein interactions followed by the antibody (ab756,  $1\mu\text{g}/1\times 10^6$  cells) for 30 min at 22°C. The secondary antibody used was DyLight® 488 goat anti-mouse IgG (H+L) ([ab96879](#)) at 1/500 dilution for 30 min at 22°C. Isotype control antibody (black line) was mouse IgG1 [CIGG1] ([ab91353](#),  $2\mu\text{g}/1\times 10^6$  cells) used under the same conditions. Unlabelled sample (blue line). Acquisition of >5,000 events were collected using a 20mW Argon ion laser (488nm) and 525/30 bandpass filter.



Immunocytochemistry/ Immunofluorescence - Anti-Cytokeratin antibody [MNF116] (ab756)

This image was produced with [ab82612](#), which is the same as ab756 except for the buffer.

ICC/IF image of [ab82612](#) stained HeLa cells. The cells were 4% formaldehyde (10 min) and then incubated in 1%BSA / 10% normal goat serum / 0.3M glycine in 0.1% PBS-Tween for 1h to permeabilise the cells and block non-specific protein-protein interactions. The cells were then incubated with the antibody ([ab82612](#), neat) overnight at +4°C. The secondary antibody (green) was [ab96879](#) DyLight 488 goat anti-mouse IgG (H+L) used at a 1/250 dilution for 1h. Alexa Fluor® 594 WGA was used to label plasma membranes (red) at a 1/200 dilution for 1h. DAPI was used to stain the cell nuclei (blue) at a concentration of 1.43μM.

**Please note:** All products are "FOR RESEARCH USE ONLY. NOT FOR USE IN DIAGNOSTIC PROCEDURES"

### **Our Abpromise to you: Quality guaranteed and expert technical support**

---

- Replacement or refund for products not performing as stated on the datasheet
- Valid for 12 months from date of delivery
- Response to your inquiry within 24 hours
  
- We provide support in Chinese, English, French, German, Japanese and Spanish
- Extensive multi-media technical resources to help you
- We investigate all quality concerns to ensure our products perform to the highest standards

If the product does not perform as described on this datasheet, we will offer a refund or replacement. For full details of the Abpromise, please visit <https://www.abcam.co.jp/abpromise> or contact our technical team.

### **Terms and conditions**

---

- Guarantee only valid for products bought direct from Abcam or one of our authorized distributors