

### Anti-Cytokeratin 7 antibody [EP1620Y] ab68460

KO 評価済 リコンビナント RabMAb

画像数 5

#### 製品の概要

製品名	Anti-Cytokeratin 7 antibody [EP1620Y]
製品の詳細	Rabbit monoclonal [EP1620Y] to Cytokeratin 7
由来種	Rabbit
アプリケーション	<b>適用あり:</b> WB, IP <b>適用なし:</b> Flow Cyt or ICC/IF
種交差性	<b>交差種:</b> Human
免疫原	Synthetic peptide corresponding to Human Cytokeratin 7 aa 450-550 (C terminal).
ポジティブ・コントロール	WB: HeLa, T-47D, SK-BR-3, A549 and placenta cell lysates
特記事項	<p>This product is a recombinant monoclonal antibody, which offers several advantages including:</p> <ul style="list-style-type: none"> <li>- High batch-to-batch consistency and reproducibility</li> <li>- Improved sensitivity and specificity</li> <li>- Long-term security of supply</li> <li>- Animal-free production</li> </ul> <p>For more information <a href="#">see here</a>.</p> <p>Our RabMAb<sup>®</sup> technology is a patented hybridoma-based technology for making rabbit monoclonal antibodies. For details on our patents, please refer to <a href="#">RabMAb<sup>®</sup> patents</a>.</p> <p>Mouse, Rat: We have preliminary internal testing data to indicate this antibody may not react with these species. Please contact us for more information.</p>

#### 製品の特性

製品の状態	Liquid
保存方法	Shipped at 4°C. Store at +4°C short term (1-2 weeks). Upon delivery aliquot. Store at -20°C long term. Avoid freeze / thaw cycle.
バッファー	pH: 7.2 Preservative: 0.01% Sodium azide Constituents: 59% PBS, 40% Glycerol (glycerin, glycerine), 0.5% BSA
精製度	Protein A purified
ポリ/モノ	モノクローナル

クローン名 EP1620Y  
アイソタイプ IgG

アプリケーション

**The Abpromise guarantee**      **Abpromise保証は、** 次のテスト済みアプリケーションにおけるab68460の使用に適用されます  
アプリケーションノートには、推奨の開始希釈率がありますが、適切な希釈率につきましてはご検討ください。

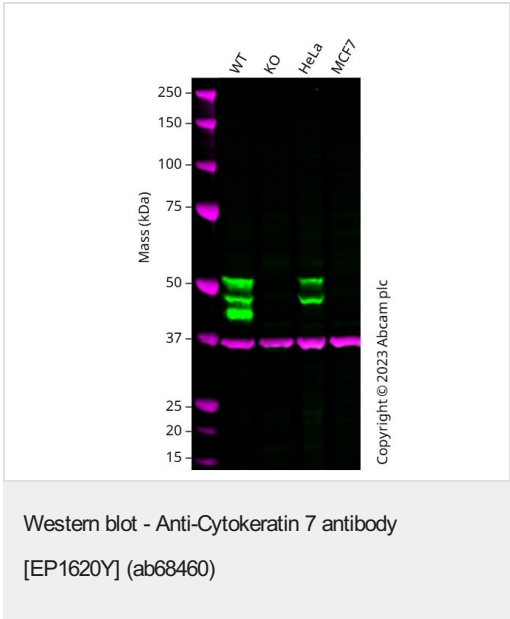
アプリケーション	Abreviews	特記事項
WB		1/10000 - 1/20000. Detects a band of approximately 51 kDa (predicted molecular weight: 51 kDa).
IP		1/20. <b>For unpurified use at 1/50.</b>

追加情報      Is unsuitable for Flow Cyt or ICC/IF.

ターゲット情報

機能	Blocks interferon-dependent interphase and stimulates DNA synthesis in cells. Involved in the translational regulation of the human papillomavirus type 16 E7 mRNA (HPV16 E7).
組織特異性	Expressed in cultured epidermal, bronchial and mesothelial cells but absent in colon, ectocervix and liver. Observed throughout the glandular cells in the junction between stomach and esophagus but is absent in the esophagus.
配列類似性	Belongs to the intermediate filament family.
翻訳後修飾	Arg-20 is dimethylated, probably to asymmetric dimethylarginine.
細胞内局在	Cytoplasm.

画像



**All lanes :** Anti-Cytokeratin 7 antibody [EP1620Y] (ab68460) at 1/10000 dilution

- Lane 1 :** Wild-type A549 cell lysate
- Lane 2 :** KRT7 knockout A549 cell lysate
- Lane 3 :** HeLa cell lysate
- Lane 4 :** MCF7 cell lysate

Lysates/proteins at 20 µg per lane.

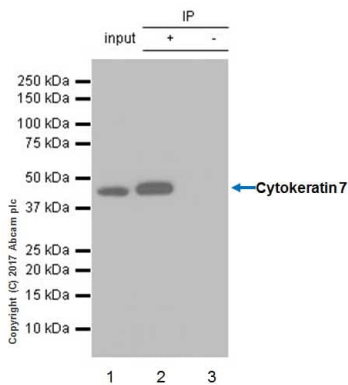
Developed using the ECL technique.

Performed under reducing conditions.

**Predicted band size:** 51 kDa

**Observed band size:** 40-55 kDa

Western blot: Anti-KRT7 antibody [EP1620Y] (ab68460) staining at 1/10000 dilution, shown in green; Mouse anti-GAPDH antibody [6C5] ([ab8245](#)) loading control staining at 1/20000 dilution, shown in magenta. In Western blot, ab68460 was shown to bind specifically to KRT7. A band was observed at 40-55 kDa in wild-type A549 cell lysates with no signal observed at this size in KRT7 knockout cell line. To generate this image, wild-type and KRT7 knockout A549 cell lysates were analysed. First, samples were run on an SDS-PAGE gel then transferred onto a nitrocellulose membrane. Membranes were blocked in 3% milk in TBS-0.1% Tween® 20 (TBS-T) before incubation with primary antibodies overnight at 4°C. Blots were washed four times in TBS-T, incubated with secondary antibodies for 1 h at room temperature, washed again four times then imaged. Secondary antibodies used were Goat anti-Rabbit IgG H&L 800CW and Goat anti-Mouse IgG H&L 680RD at 1/20000 dilution.



Immunoprecipitation - Anti-Cytokeratin 7 antibody  
[EP1620Y] (ab68460)

ab68460 (purified) at 1:20 dilution (0.6µg) immunoprecipitating Cytokeratin 7 in T-47D whole cell lysate.

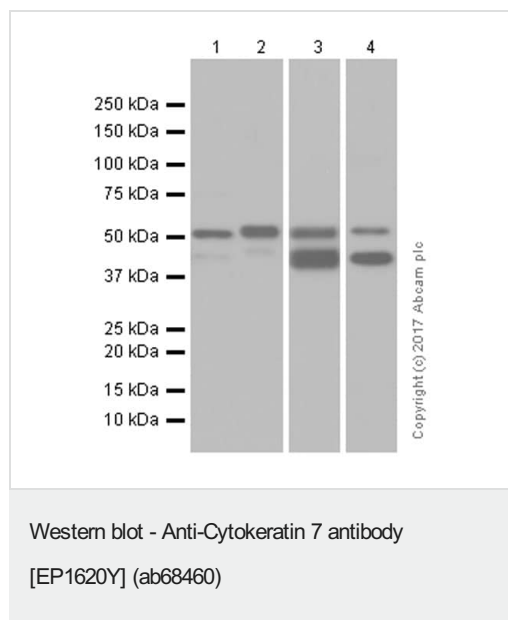
Lane 1 (input): T-47D (Human ductal breast epithelial tumor epithelial cell) whole cell lysate 10µg

Lane 2 (+): ab68460 & T-47D whole cell lysate

Lane 3 (-): Rabbit monoclonal IgG ([ab172730](#)) instead of ab68460 in T-47D whole cell lysate

For western blotting, VeriBlot for IP Detection Reagent (HRP) ([ab131366](#)) was used for detection at 1:1000 dilution.

Blocking and diluting buffer: 5% NFDM/TBST.



**All lanes :** Anti-Cytokeratin 7 antibody [EP1620Y] (ab68460) at 1/20000 dilution (purified)

**Lane 1 :** HeLa (Human cervix adenocarcinoma epithelial cell) whole cell lysate at 20 µg/ml

**Lane 2 :** T-47D (Human ductal breast epithelial tumor epithelial cell) whole cell lysate at 20 µg/ml

**Lane 3 :** SK-BR-3 (Human breast adenocarcinoma epithelial cell) whole cell lysate at 20 µg/ml

**Lane 4 :** Human placenta tissue lysate at 20 mg/ml

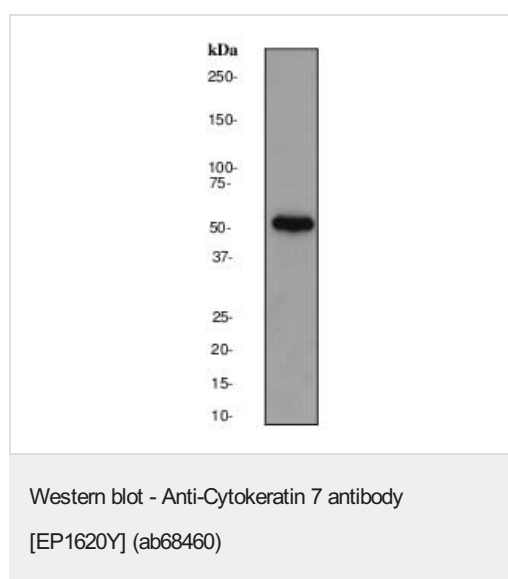
### Secondary

**All lanes :** Goat Anti-Rabbit IgG (HRP) with minimal cross-reactivity with human IgG at 1/2000 dilution

**Predicted band size:** 51 kDa

Blocking and diluting buffer : 5% NFDM/TBST

~45 kDa bands are supported by the literature and competitor's products, which may be an isoform.[PMID:16265353]



Anti-Cytokeratin 7 antibody [EP1620Y] (ab68460) at 1/20000 dilution (unpurified) + HeLa cell lysate at 10 µg

### Secondary

HRP conjugated Goat anti-Rabbit at 1/2000 dilution

**Predicted band size:** 51 kDa

**Observed band size:** 51 kDa

### Why choose a recombinant antibody?



**Research with confidence**  
Consistent and reproducible results



**Long-term and scalable supply**  
Recombinant technology



**Success from the first experiment**  
Confirmed specificity



**Ethical standards compliant**  
Animal-free production

Anti-Cytokeratin 7 antibody [EP1620Y] (ab68460)

**Please note:** All products are "FOR RESEARCH USE ONLY. NOT FOR USE IN DIAGNOSTIC PROCEDURES"

### Our Abpromise to you: Quality guaranteed and expert technical support

---

- Replacement or refund for products not performing as stated on the datasheet
- Valid for 12 months from date of delivery
- Response to your inquiry within 24 hours
- We provide support in Chinese, English, French, German, Japanese and Spanish
- Extensive multi-media technical resources to help you
- We investigate all quality concerns to ensure our products perform to the highest standards

If the product does not perform as described on this datasheet, we will offer a refund or replacement. For full details of the Abpromise, please visit <https://www.abcam.co.jp/abpromise> or contact our technical team.

### Terms and conditions

---

- Guarantee only valid for products bought direct from Abcam or one of our authorized distributors