

Anti-Cytokeratin 3/CK-3 antibody [AE5] ab68260

リコンビナント

★★★★★ [2 Abreviews](#) [27 References](#) [画像数 2](#)

製品の概要

製品名	Anti-Cytokeratin 3/CK-3 antibody [AE5]
製品の詳細	Mouse monoclonal [AE5] to Cytokeratin 3/CK-3
由来種	Mouse
特異性	This antibody recognizes the 64kD polypeptide (cytokeratin 3 / CK-3) and 55 kDa polypeptide (cytokeratin 12) of rabbit corneal epithelium. It also recognizes bovine snout and lip epithelium, as well as a rabbit corneal cell line. The clone number has been updated from (2Q1040) to (AE5) both clone numbers name the same antibody clone.
アプリケーション	適用あり: IHC-P 適用なし: Flow Cyt (Intra), ICC, IP or WB
種交差性	交差種: Human
免疫原	Full length native protein (purified). This information is proprietary to Abcam and/or its suppliers.
ポジティブ・コントロール	IHC: Human squamous papilloma of cornea tissue
特記事項	<p>This product has switched from a hybridoma to recombinant production method on 5th January 2022</p> <p>The Life Science industry has been in the grips of a reproducibility crisis for a number of years. Abcam is leading the way in addressing this with our range of recombinant monoclonal antibodies and knockout edited cell lines for gold-standard validation. Please check that this product meets your needs before purchasing.</p> <p>If you have any questions, special requirements or concerns, please send us an inquiry and/or contact our Support team ahead of purchase. Recommended alternatives for this product can be found below, along with publications, customer reviews and Q&As</p>

製品の特性

製品の状態	Liquid
保存方法	Shipped at 4°C. Store at +4°C short term (1-2 weeks). Upon delivery aliquot. Store at -20°C long term. Avoid freeze / thaw cycle.
バッファー	pH: 7.20 Preservative: 0.01% Sodium azide Constituents: 59% PBS, 40% Glycerol (glycerin, glycerine), 0.05% BSA

精製度	Protein A purified
ポリ/モノ	モノクローナル
クローン名	AE5
アイソタイプ	IgG1

アプリケーション

The Abpromise guarantee **Abpromise保証は、次のテスト済みアプリケーションにおけるab68260の使用に適用されます**
 アプリケーションノートには、推奨の開始希釈率がありますが、適切な希釈率につきましてはご検討ください。

アプリケーション	Abreviews	特記事項
IHC-P	★★★★★ (1)	Use a concentration of 0.25 µg/ml. Perform heat mediated antigen retrieval with Tris/EDTA buffer pH 9.0 before commencing with IHC staining protocol.

追加情報 Is unsuitable for Flow Cyt (Intra), ICC, IP or WB.

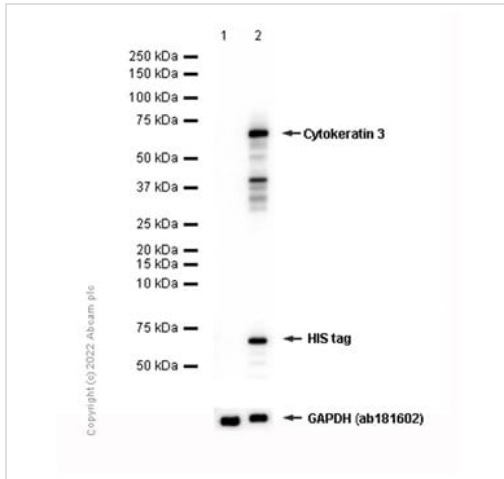
ターゲット情報

組織特異性 Cornea specific.

関連疾患 Defects in KRT3 are a cause of Meesmann corneal dystrophy (MECD) [MIM:122100]; also abbreviated as MCD and known as juvenile epithelial corneal dystrophy of Meesmann. MECD is an autosomal dominant disease that causes fragility of the anterior corneal epithelium. Patients are usually asymptomatic until adulthood when rupture of the corneal microcysts may cause erosions, producing clinical symptoms such as photophobia, contact lens intolerance and intermittent diminution of visual acuity. Rarely, subepithelial scarring causes irregular corneal astigmatism and permanent visual impairment. Histological examination shows a disorganized and thickened epithelium with widespread cytoplasmic vacuolation and numerous small, round, debris-laden intraepithelial cysts.

配列類似性 Belongs to the intermediate filament family.

画像



Western blot - Anti-Cytokeratin 3/CK-3 antibody [AE5] (ab68260)

All lanes : Anti-Cytokeratin 3/CK-3 antibody [AE5] (ab68260) at 1/5000 dilution

Lane 1 : 293T (Human embryonic kidney epithelial cell) transfected with an empty vector containing a His tag®, whole cell lysate

Lane 2 : 293T (Human embryonic kidney epithelial cell) transfected with Cytokeratin full length expression vector containing a His tag®, whole cell lysate

Lysates/proteins at 15 µg per lane.

Secondary

All lanes : Peroxidase-Conjugated Goat anti-Mouse IgG (H+L) at 1/10000 dilution

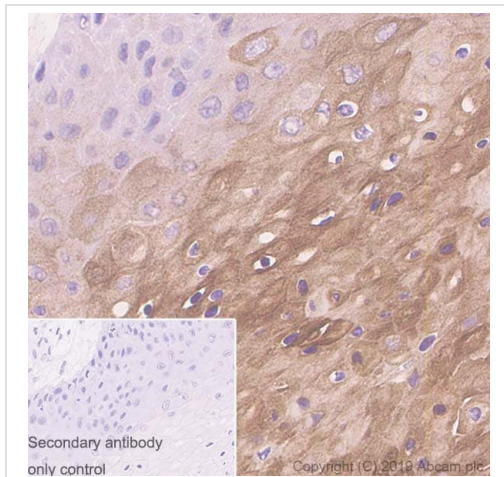
Predicted band size: 64 kDa

Observed band size: 65 kDa

Exposure time: 3 seconds

Blocking and diluting buffer and concentration: 5% NFDM/TBST.

ab181602 was used as GAPDH loading control.



Immunohistochemistry (Formalin/PFA-fixed paraffin-embedded sections) - Anti-Cytokeratin 3/CK-3 antibody [AE5] (ab68260)

Immunohistochemical analysis of paraffin-embedded human squamous papilloma of cornea tissue labelling Cytokeratin 3 with ab68260 at 1/500 dilution, followed by a ready-to-use secondary antibody. Cytosolic staining on human squamous papilloma of cornea tissue is observed. Counterstained with Hematoxylin. Positive staining on human squamous papilloma of cornea. The section was incubated with ab68260 for 30 mins at room temperature. The immunostaining staining was performed on a Leica Biosystems BOND® RX instrument.

Heat mediated antigen retrieval with Tris-EDTA buffer (pH 9.0, epitope retrieval solution 2) for 20 mins.

Please note: All products are "FOR RESEARCH USE ONLY. NOT FOR USE IN DIAGNOSTIC PROCEDURES"

Our Abpromise to you: Quality guaranteed and expert technical support

- Replacement or refund for products not performing as stated on the datasheet
- Valid for 12 months from date of delivery
- Response to your inquiry within 24 hours

- We provide support in Chinese, English, French, German, Japanese and Spanish
- Extensive multi-media technical resources to help you
- We investigate all quality concerns to ensure our products perform to the highest standards

If the product does not perform as described on this datasheet, we will offer a refund or replacement. For full details of the Abpromise, please visit <https://www.abcam.co.jp/abpromise> or contact our technical team.

Terms and conditions

- Guarantee only valid for products bought direct from Abcam or one of our authorized distributors