

Anti-Cytokeratin 20 antibody - Cytoskeleton Marker ab97511

6 References [画像数 1](#)

医薬用外劇物

製品の概要

製品名	Anti-Cytokeratin 20 antibody - Cytoskeleton Marker
製品の詳細	Rabbit polyclonal to Cytokeratin 20 - Cytoskeleton Marker
由来種	Rabbit
アプリケーション	適用あり: WB, IHC-P, ICC/IF
種交差性	交差種: Mouse, Human
免疫原	Recombinant fragment, corresponding to a region within amino acids 75-287 of Human Cytokeratin 20 (NP_061883).
ポジティブ・コントロール	HeLa cell, HT29 xenograft
特記事項	<p>The Life Science industry has been in the grips of a reproducibility crisis for a number of years. Abcam is leading the way in addressing this with our range of recombinant monoclonal antibodies and knockout edited cell lines for gold-standard validation. Please check that this product meets your needs before purchasing.</p> <p>If you have any questions, special requirements or concerns, please send us an inquiry and/or contact our Support team ahead of purchase. Recommended alternatives for this product can be found below, along with publications, customer reviews and Q&As</p>

製品の特性

製品の状態	Liquid
保存方法	Shipped at 4°C. Upon delivery aliquot. Store at -20°C or -80°C. Avoid freeze / thaw cycle.
バッファー	<p>pH: 7.00</p> <p>Preservative: 0.01% Thimerosal (merthiolate)</p> <p>Constituents: 1.21% Tris, 0.75% Glycine, 10% Glycerol (glycerin, glycerine)</p>
精製度	Immunogen affinity purified
ポリ/モノ	ポリクローナル
アイソタイプ	IgG

アプリケーション

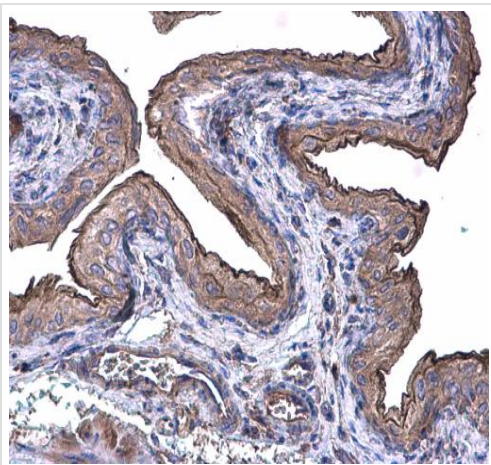
The Abpromise guarantee

Abpromise保証は、次のテスト済みアプリケーションにおけるab97511の使用に適用されます
アプリケーションノートには、推奨の開始希釈率がありますが、適切な希釈率につきましてはご確認ください。

アプリケーション	Abreviews	特記事項
WB		1/500 - 1/3000. Predicted molecular weight: 48 kDa.
IHC-P		1/100 - 1/500.
ICC/IF		1/100 - 1/200.

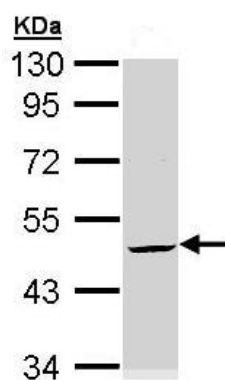
ターゲット情報	
機能	Plays a significant role in maintaining keratin filament organization in intestinal epithelia. When phosphorylated, plays a role in the secretion of mucin in the small intestine.
組織特異性	Expressed predominantly in the intestinal epithelium. Expressed in luminal cells of colonic mucosa. Also expressed in the Merkel cells of keratinized oral mucosa; specifically at the tips of some rete ridges of the gingival mucosa, in the basal layer of the palatal mucosa and in the taste buds of lingual mucosa.
配列類似性	Belongs to the intermediate filament family.
発生段階	First detected at embryonic week 8 in individual 'converted' simple epithelial cells of the developing intestinal mucosa. In later fetal stages, synthesis extends over most goblet cells and a variable number of villus enterocytes. In the developing gastric and intestinal mucosa, expressed in all enterocytes and goblet cells as well as certain 'low-differentiated' columnar cells, whereas the neuroendocrine and Paneth cells are negative.
翻訳後修飾	Hyperphosphorylation at Ser-13 occurs during the early stages of apoptosis but becomes less prominent during the later stages. Phosphorylation at Ser-13 also increases in response to stress brought on by cell injury. Proteolytically cleaved by caspases during apoptosis. Cleavage occurs at Asp-228.
細胞内局在	Cytoplasm.

画像



Immunohistochemistry (Formalin/PFA-fixed paraffin-embedded sections) - Anti-Cytokeratin 20 antibody - Cytoskeleton Marker (ab97511)

Ab97511 staining Cytokeratin 20 in Mouse urinary bladder by Immunohistochemistry (IHC-P-paraformaldehyde-fixed, paraffin embedded sections). Sample was incubated with primary antibody at a 1:500 dilution.

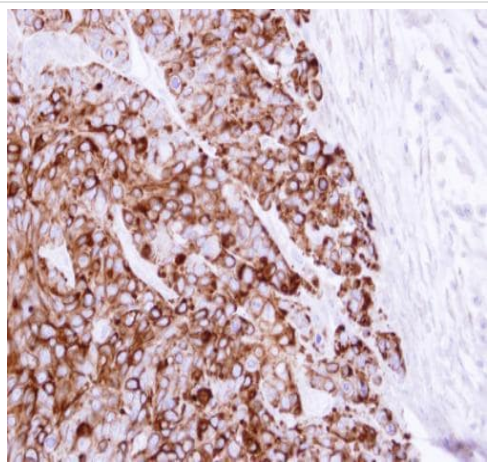


Western blot - Anti-Cytokeratin 20 antibody - Cytoskeleton Marker (ab97511)

Anti-Cytokeratin 20 antibody - Cytoskeleton Marker (ab97511) at 1/3000 dilution + HeLa whole cell lysate at 30 µg

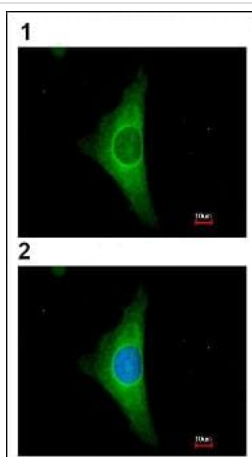
Predicted band size: 48 kDa

10% SDS PAGE



Immunohistochemistry (Formalin/PFA-fixed paraffin-embedded sections) - Anti-Cytokeratin 20 antibody - Cytoskeleton Marker (ab97511)

Ab97511 staining Cytokeratin 20 in HT29 xenograft by Immunohistochemistry (IHC-P - paraformaldehyde - fixed, paraffin embedded sections). Samples were incubated with primary antibody at 1:100 dilution.



Immunocytochemistry/ Immunofluorescence - Anti-Cytokeratin 20 antibody - Cytoskeleton Marker (ab97511)

Immunofluorescence analysis of Cytokeratin 20 in paraformaldehyde fixed HeLa, using ab97511 at a 1/200 dilution. Lower image (2): merged with DNA probe.

Please note: All products are "FOR RESEARCH USE ONLY. NOT FOR USE IN DIAGNOSTIC PROCEDURES"

Our Abpromise to you: Quality guaranteed and expert technical support

- Replacement or refund for products not performing as stated on the datasheet
- Valid for 12 months from date of delivery
- Response to your inquiry within 24 hours
- We provide support in Chinese, English, French, German, Japanese and Spanish
- Extensive multi-media technical resources to help you
- We investigate all quality concerns to ensure our products perform to the highest standards

If the product does not perform as described on this datasheet, we will offer a refund or replacement. For full details of the Abpromise, please visit <https://www.abcam.co.jp/abpromise> or contact our technical team.

Terms and conditions

- Guarantee only valid for products bought direct from Abcam or one of our authorized distributors