

### Anti-Cytokeratin 19 antibody [EPR1579Y] ab76539

KO 評価済 リコンビナント RabMAb

★★★★★ 3 Abreviews 11 References 画像数 10

#### 製品の概要

製品名	Anti-Cytokeratin 19 antibody [EPR1579Y]
製品の詳細	Rabbit monoclonal [EPR1579Y] to Cytokeratin 19
由来種	Rabbit
特異性	In our WB testing this antibody did not recognize mouse Cytokeratin 19, but customers have reported the antibody recognizes the protein in IHC-P with mouse tissue. Thus, we have removed mouse as a "does not react with" species and welcome further feedback from other researchers using this antibody in mouse.
アプリケーション	適用あり: Flow Cyt (Intra), WB, IP, IHC-P, ICC/IF
種交差性	交差種: Human
免疫原	Synthetic peptide. This information is proprietary to Abcam and/or its suppliers.
ポジティブ・コントロール	WB: T47D, HepG2 or SKBR-3 cell lysate; IHC-P: Human stomach adenocarcinoma tissue. IF/ICC: HCT116 cell line. MCF7 cells (MCF7-KRT19 KO used as negative cell line).
特記事項	<p>This product is a recombinant monoclonal antibody, which offers several advantages including:</p> <ul style="list-style-type: none"> <li>- High batch-to-batch consistency and reproducibility</li> <li>- Improved sensitivity and specificity</li> <li>- Long-term security of supply</li> <li>- Animal-free production</li> </ul> <p>For more information <a href="#">see here</a>.</p> <p>Our RabMAb<sup>®</sup> technology is a patented hybridoma-based technology for making rabbit monoclonal antibodies. For details on our patents, please refer to <a href="#">RabMAb<sup>®</sup> patents</a>.</p> <p>Rat: We have preliminary internal testing data to indicate this antibody may not react with this species. Please contact us for more information.</p>

#### 製品の特性

製品の状態	Liquid
保存方法	Shipped at 4°C. Store at +4°C short term (1-2 weeks). Upon delivery aliquot. Store at -20°C long term. Avoid freeze / thaw cycle.
バッファー	pH: 7.20 Preservative: 0.01% Sodium azide

	Constituents: 59% PBS, 40% Glycerol (glycerin, glycerine), 0.5% BSA
精製度	Protein A purified
ポリモノ	モノクローナル
クローン名	EPR1579Y
アイソタイプ	IgG

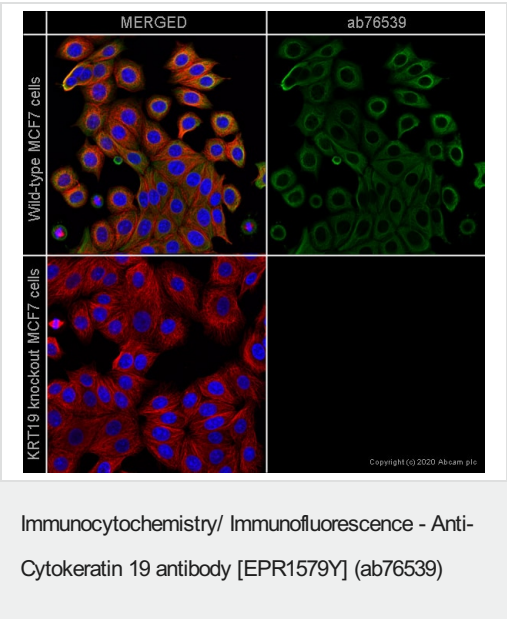
## アプリケーション

**The Abpromise guarantee**      **Abpromise保証は、次のテスト済みアプリケーションにおけるab76539の使用に適用されます**  
 アプリケーションノートには、推奨の開始希釈率がありますが、適切な希釈率につきましてはご検討ください。

アプリケーション	Abreviews	特記事項
Flow Cyt (Intra)		1/20. <b>ab172730</b> - Rabbit monoclonal IgG, is suitable for use as an isotype control with this antibody.
WB	★★★★★ (1)	1/10000 - 1/50000. Predicted molecular weight: 44 kDa.
IP		1/20.
IHC-P		1/1000. Perform heat mediated antigen retrieval via the pressure cooker method before commencing with IHC staining protocol. See <b>IHC antigen retrieval protocols</b> . <b>For unpurified use at 1/100 - 1/250.</b>
ICC/IF	★★★★★ (1)	1/100 - 1/250. Signal can be observed in cells fixed with either methanol or paraformaldehyde.

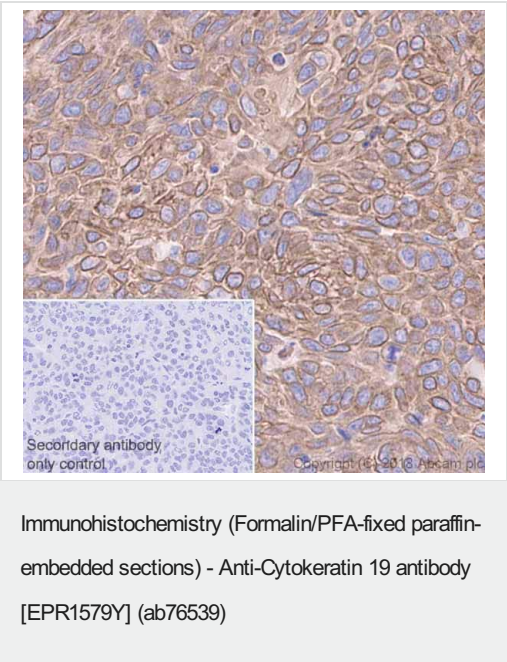
## ターゲット情報

機能	Involved in the organization of myofibers. Together with KRT8, helps to link the contractile apparatus to dystrophin at the costameres of striated muscle.
組織特異性	Expressed in a defined zone of basal keratinocytes in the deep outer root sheath of hair follicles. Also observed in sweat gland and mammary gland ductal and secretory cells, bile ducts, gastrointestinal tract, bladder urothelium, oral epithelia, esophagus, ectocervical epithelium (at protein level). Expressed in epidermal basal cells, in nipple epidermis and a defined region of the hair follicle. Also seen in a subset of vascular wall cells in both the veins and artery of human umbilical cord, and in umbilical cord vascular smooth muscle. Observed in muscle fibers accumulating in the costameres of myoplasm at the sarcolemma in structures that contain dystrophin and spectrin.
配列類似性	Belongs to the intermediate filament family.
発生段階	Present in hair follicles at all stages of development.
ドメイン	This keratin differs from all other IF proteins in lacking the C-terminal tail domain.

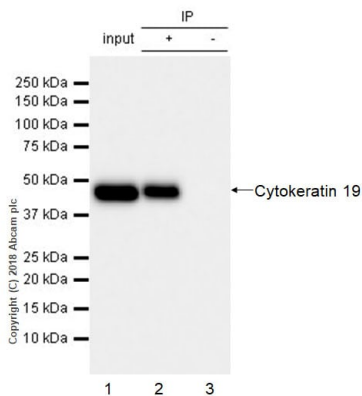


ab76539 staining Cytokeratin 19 in wild-type MCF7 cells (top panel) and KRT19 knockout MCF7 cells (bottom panel). The cells were fixed with 100% methanol (5 min), permeabilized with 0.1% Triton X-100 for 5 minutes and then blocked with 1% BSA/10% normal goat serum/0.3M glycine in 0.1% PBS-Tween for 1h. The cells were then incubated with ab76539 at 1/500 dilution and **ab7291** (Mouse monoclonal to alpha Tubulin) at 1/1000 dilution overnight at +4°C, followed by a further incubation at room temperature for 1h with a goat secondary antibody to rabbit IgG (Alexa Fluor® 488) (**ab150081**) at 2 µg/ml (shown in green) and a goat secondary antibody to mouse IgG (Alexa Fluor® 594) (**ab150120**) at 2 µg/ml (shown in red). Nuclear DNA was labelled in blue with DAPI.

Image was taken with a confocal microscope (Leica-Microsystems, TCS SP8).



Immunohistochemistry (Formalin/PFA-fixed paraffin-embedded sections) analysis of Human lung cancer tissue sections labeling Cytokeratin 19 with Purified ab76539 at 1:1000 dilution (0.12 µg/ml). Heat mediated antigen retrieval was performed using **ab93684** (Tris/EDTA buffer, pH 9.0). Tissue was counterstained with Hematoxylin. ImmunoHistoProbe one step HRP Polymer (ready to use) secondary antibody was used at 1:0 dilution. PBS instead of the primary antibody was used as the negative control.



Immunoprecipitation - Anti-Cytokeratin 19 antibody  
[EPR1579Y] (ab76539)

ab76539 (purified) at 1:20 dilution (2ug) immunoprecipitating Cytokeratin 19 in SKBR-3 whole cell lysate.

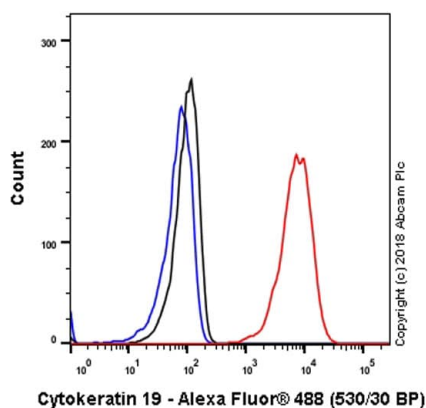
Lane 1 (input): SK-BR-3 (Human breast adenocarcinoma epithelial cell) whole cell lysate 10 µg

Lane 2 (+): ab76539 & SKBR-3 whole cell lysate

Lane 3 (-): Rabbit monoclonal IgG (**ab172730**) instead of ab76539 in SKBR-3 whole cell lysate

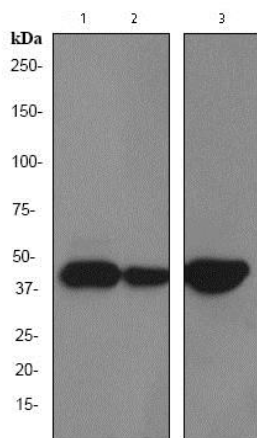
For western blotting, VeriBlot for IP Detection Reagent (HRP) (**ab131366**) was used for detection at 1:1000 dilution.

Blocking and diluting buffer: 5% NFDM/TBST.



Flow Cytometry (Intracellular) - Anti-Cytokeratin 19 antibody [EPR1579Y] (ab76539)

Intracellular Flow Cytometry analysis of MCF7 (Human breast adenocarcinoma epithelial cell) cells labeling Cytokeratin 19 with purified ab76539 at 1/20 dilution (10 µg/ml) (red). Cells were fixed with 4% Paraformaldehyde. A Goat anti rabbit IgG (Alexa Fluor® 488) secondary antibody was used at 1/2000 dilution. Isotype control - Rabbit monoclonal IgG (Black). Unlabeled control - Cell without incubation with primary antibody and secondary antibody (Blue).



Western blot - Anti-Cytokeratin 19 antibody  
[EPR1579Y] (ab76539)

**All lanes** : Anti-Cytokeratin 19 antibody [EPR1579Y] (ab76539) at 1/10000 dilution (unpurified)

**Lane 1** : T47D cell lysate

**Lane 2** : HepG2 cell lysate

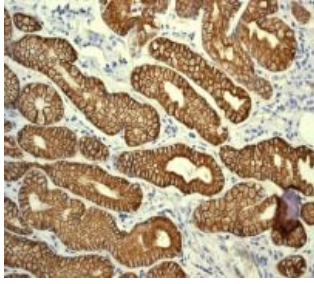
**Lane 3** : SKBR-3 cell lysate

Lysates/proteins at 10 µg per lane.

**Secondary**

**All lanes** : HRP-labelled goat anti-rabbit at 1/2000 dilution

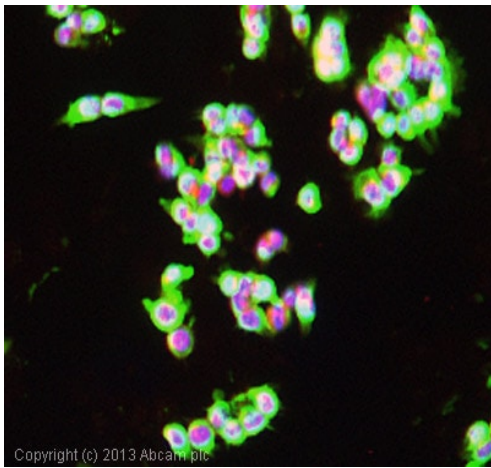
**Predicted band size:** 44 kDa



Immunohistochemistry (Formalin/PFA-fixed paraffin-embedded sections) - Anti-Cytokeratin 19 antibody [EPR1579Y] (ab76539)

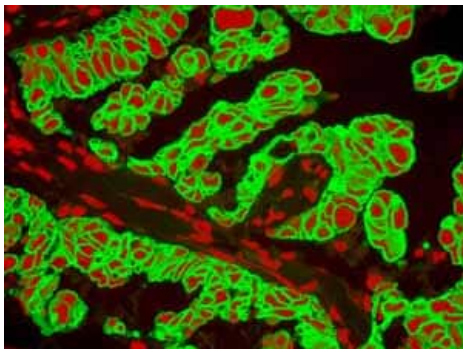
Immunohistochemical staining of human stomach adenocarcinoma tissue with ab76539 (unpurified) at 1/100-1/250.

Heat mediated antigen retrieval was performed via the pressure cooker method before commencing with IHC staining protocol.



Immunocytochemistry/ Immunofluorescence - Anti-Cytokeratin 19 antibody [EPR1579Y] (ab76539)

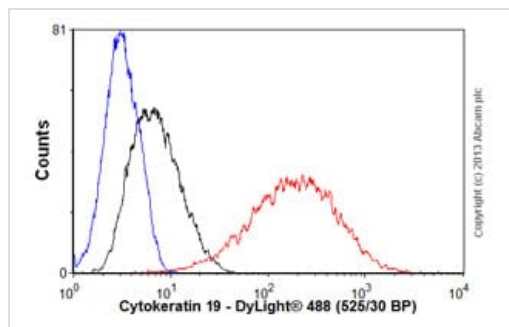
ab76539 (unpurified) stained HCT116 cells. The cells were 4% formaldehyde fixed for 10 minutes at room temperature and then incubated in 1% BSA / 10% normal goat serum / 0.3M glycine in 0.1% PBS-Tween for 1 hour at room temperature to permeabilise the cells and block non-specific protein-protein interactions. The cells were then incubated with the antibody (ab76539 at 1/200 dilution) overnight at +4°C. The secondary antibody (pseudo-colored green) was Goat Anti-Rabbit IgG H&L (Alexa Fluor® 488) preadsorbed ([ab150081](#)) used at a 1/1000 dilution for 1 hour at room temperature. Alexa Fluor® 594 WGA was used to label plasma membranes (pseudo-colored red) at a 1/200 dilution for 1 hour at room temperature. DAPI was used to stain the cell nuclei (pseudo-colored blue) at a concentration of 1.43 µM for 1 hour at room temperature.



Immunohistochemistry (Formalin/PFA-fixed paraffin-embedded sections) - Anti-Cytokeratin 19 antibody [EPR1579Y] (ab76539)

Fluorescent immunohistochemical analysis of paraffin-embedded human breast carcinoma tissue using ab76539 (unpurified). Green-CK19 red-PI.

Heat mediated antigen retrieval was performed via the pressure cooker method before commencing with IHC staining protocol.



Flow Cytometry (Intracellular) - Anti-Cytokeratin 19 antibody [EPR1579Y] (ab76539)

Overlay histogram showing MCF7 cells stained with unpurified ab76539 (red line). The cells were fixed with 4% paraformaldehyde (10 min) and then permeabilized with 0.1% PBS-Tween for 20 min. The cells were then incubated in 1x PBS / 10% normal goat serum / 0.3M glycine to block non-specific protein-protein interactions followed by the antibody (ab76539, 1/100 dilution) for 30 min at 22°C. The secondary antibody used was DyLight® 488 goat anti-rabbit IgG (H+L) ([ab96899](#)) at 1/500 dilution for 30 min at 22°C. Isotype control antibody (black line) was rabbit IgG (monoclonal) (1µg/1x10<sup>6</sup> cells) used under the same conditions. Unlabelled sample (blue line). Acquisition of >5,000 events were collected using a 20mW Argon ion laser (488nm) and 525/30 bandpass filter.

#### Why choose a recombinant antibody?



**Research with confidence**  
Consistent and reproducible results



**Long-term and scalable supply**  
Recombinant technology



**Success from the first experiment**  
Confirmed specificity



**Ethical standards compliant**  
Animal-free production

Anti-Cytokeratin 19 antibody [EPR1579Y] (ab76539)

**Please note:** All products are "FOR RESEARCH USE ONLY. NOT FOR USE IN DIAGNOSTIC PROCEDURES"

#### Our Abpromise to you: Quality guaranteed and expert technical support

- Replacement or refund for products not performing as stated on the datasheet
- Valid for 12 months from date of delivery
- Response to your inquiry within 24 hours
- We provide support in Chinese, English, French, German, Japanese and Spanish
- Extensive multi-media technical resources to help you

- We investigate all quality concerns to ensure our products perform to the highest standards

If the product does not perform as described on this datasheet, we will offer a refund or replacement. For full details of the Abpromise, please visit <https://www.abcam.co.jp/abpromise> or contact our technical team.

#### **Terms and conditions**

---

- Guarantee only valid for products bought direct from Abcam or one of our authorized distributors