

Anti-Cytokeratin 19 antibody [BA16] ab20210

★★★★★ [2 Abreviews](#) [3 References](#) [画像数 4](#)

製品の概要

製品名	Anti-Cytokeratin 19 antibody [BA16]
製品の詳細	Mouse monoclonal [BA16] to Cytokeratin 19
由来種	Mouse
アプリケーション	適用あり: ICC/IF, WB, ICC, IHC-P
種交差性	交差種: Human
免疫原	corresponding to Cytokeratin 19.
ポジティブ・コントロール	ICC: HepG2 cells
特記事項	<p>This antibody clone is manufactured by Abcam. If you require a custom buffer formulation or conjugation for your experiments, please contact orders@abcam.com.</p> <p>The Life Science industry has been in the grips of a reproducibility crisis for a number of years. Abcam is leading the way in addressing this with our range of recombinant monoclonal antibodies and knockout edited cell lines for gold-standard validation. Please check that this product meets your needs before purchasing.</p> <p>If you have any questions, special requirements or concerns, please send us an inquiry and/or contact our Support team ahead of purchase. Recommended alternatives for this product can be found below, along with publications, customer reviews and Q&As</p>

製品の特性

製品の状態	Liquid
保存方法	Shipped at 4°C. Store at +4°C short term (1-2 weeks). Upon delivery aliquot. Store at -20°C or -80°C. Avoid freeze / thaw cycle.
バッファー	Preservative: 0.02% Sodium azide Constituents: PBS, 6.97% L-Arginine
精製度	Protein G purified
ポリ/モノ	モノクローナル
クローン名	BA16
ミエローマ	x63-Ag8.653
アイソタイプ	IgG1

軽鎖の種類

unknown

アプリケーション

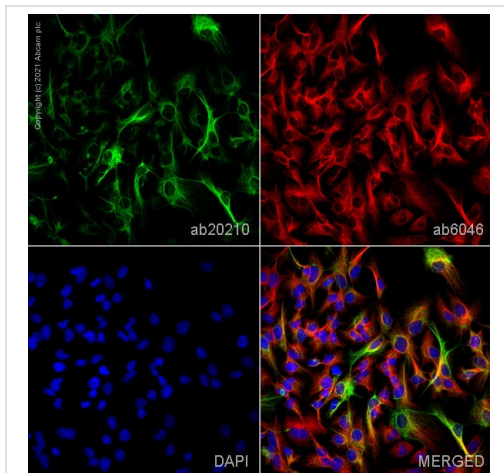
The Abpromise guarantee **Abpromise保証は、**次のテスト済みアプリケーションにおけるab20210の使用に適用されます
アプリケーションノートには、推奨の開始希釈率がありますが、適切な希釈率につきましてはご検討ください。

アプリケーション	Abreviews	特記事項
ICC/IF		Use a concentration of 5 - 10 µg/ml.
WB		Use at an assay dependent concentration. Predicted molecular weight: 40 kDa.
ICC	★★★★★ (1)	Use a concentration of 5 - 10 µg/ml.
IHC-P		Use a concentration of 5 µg/ml. Perform heat mediated antigen retrieval before commencing with IHC staining protocol.

ターゲット情報

機能	Involved in the organization of myofibers. Together with KRT8, helps to link the contractile apparatus to dystrophin at the costameres of striated muscle.
組織特異性	Expressed in a defined zone of basal keratinocytes in the deep outer root sheath of hair follicles. Also observed in sweat gland and mammary gland ductal and secretory cells, bile ducts, gastrointestinal tract, bladder urothelium, oral epithelia, esophagus, ectocervical epithelium (at protein level). Expressed in epidermal basal cells, in nipple epidermis and a defined region of the hair follicle. Also seen in a subset of vascular wall cells in both the veins and artery of human umbilical cord, and in umbilical cord vascular smooth muscle. Observed in muscle fibers accumulating in the costameres of myoplasm at the sarcolemma in structures that contain dystrophin and spectrin.
配列類似性	Belongs to the intermediate filament family.
発生段階	Present in hair follicles at all stages of development.
ドメイン	This keratin differs from all other IF proteins in lacking the C-terminal tail domain.

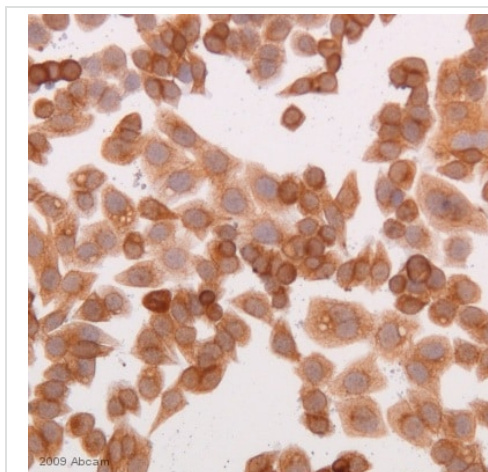
画像



Immunocytochemistry/ Immunofluorescence - Anti-Cytokeratin 19 antibody [BA16] (ab20210)

ab20210 staining Cytokeratin 19 in HepG2 cells. The cells were fixed with 100% methanol (5 min), permeabilized with 0.1% PBS-Tween for 5 minutes and then blocked with 1% BSA/10% normal goat serum/0.3M glycine in 0.1% PBS-Tween for 1h. The cells were then incubated overnight at 4°C with ab20210 at 5µg/ml and **ab6046**, Rabbit polyclonal to beta Tubulin - Loading Control. Cells were then incubated with **ab150117**, Goat polyclonal Secondary Antibody to Mouse IgG H&L (Alexa Fluor® 488) preadsorbed at 1/1000 dilution (shown in green) and **ab150080**, Goat polyclonal Secondary Antibody to Rabbit IgG - H&L (Alexa Fluor® 594) at 1/1000 dilution (shown in pseudocolour red). Nuclear DNA was labelled with DAPI (shown in blue).

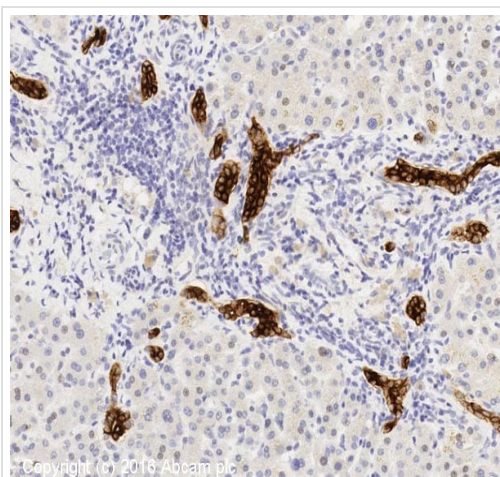
Image was acquired with a high-content analyser (Operetta CLS, Perkin Elmer) and a maximum intensity projection of confocal sections is shown.



Immunocytochemistry - Anti-Cytokeratin 19 antibody [BA16] (ab20210)

This image is courtesy of an Abreview submitted by Rene Villadsen

ab20210 at 1/100 dilution staining Cytokeratin 19 breast cancer cell line by immunocytochemistry. Sections were methanol fixed prior to blocking in 10% serum for 5 minutes and then incubated with ab20210, for 1 hour at 25°C. Ultravision ONE HRP rabbit polyclonal to mouse Ig was used as the secondary antibody.

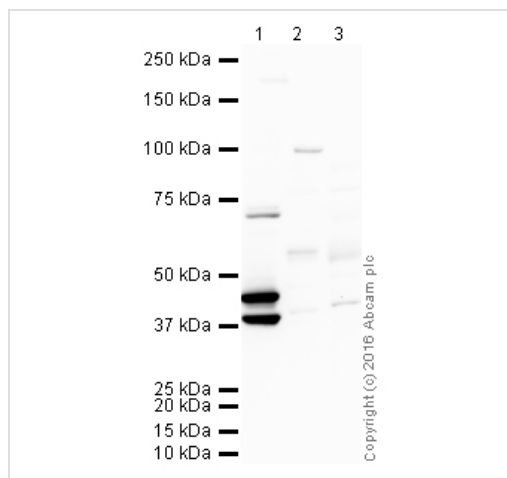


Immunohistochemistry (Formalin/PFA-fixed paraffin-embedded sections) - Anti-Cytokeratin 19 antibody [BA16] (ab20210)

IHC image of Cytokeratin 19 staining in human normal liver formalin fixed paraffin embedded tissue section*, performed on a Leica Bond™ system using the standard protocol F. The section was pre-treated using heat mediated antigen retrieval with sodium citrate buffer (pH6, epitope retrieval solution 1) for 20 mins. The section was then incubated with ab20210, 5µg/ml, for 15 mins at room temperature and detected using an HRP conjugated compact polymer system. DAB was used as the chromogen. The section was then counterstained with haematoxylin and mounted with DPX.

For other IHC staining systems (automated and non-automated) customers should optimize variable parameters such as antigen retrieval conditions, primary antibody concentration and antibody incubation times.

**Tissue obtained from the Human Research Tissue Bank, supported by the NIHR Cambridge Biomedical Research Centre*



Western blot - Anti-Cytokeratin 19 antibody [BA16] (ab20210)

All lanes : Anti-Cytokeratin 19 antibody [BA16] (ab20210) at 1 µg/ml

Lane 1 : MCF7 (Human breast adenocarcinoma cell line) Whole Cell Lysate

Lane 2 : Human liver tissue lysate - total protein ([ab29889](#))

Lane 3 : Human tonsil normal tissue lysate - total protein ([ab29615](#))

Lysates/proteins at 10 µg per lane.

Secondary

All lanes : Goat polyclonal to Mouse IgG - H&L - Pre-Adsorbed (HRP) at 1/5000 dilution

Developed using the ECL technique.

Performed under reducing conditions.

Predicted band size: 40 kDa

Observed band size: 40,44 kDa

Exposure time: 1 minute

Please note: All products are "FOR RESEARCH USE ONLY. NOT FOR USE IN DIAGNOSTIC PROCEDURES"

Our Abpromise to you: Quality guaranteed and expert technical support

- Replacement or refund for products not performing as stated on the datasheet
- Valid for 12 months from date of delivery
- Response to your inquiry within 24 hours
- We provide support in Chinese, English, French, German, Japanese and Spanish
- Extensive multi-media technical resources to help you
- We investigate all quality concerns to ensure our products perform to the highest standards

If the product does not perform as described on this datasheet, we will offer a refund or replacement. For full details of the Abpromise, please visit <https://www.abcam.co.jp/abpromise> or contact our technical team.

Terms and conditions

- Guarantee only valid for products bought direct from Abcam or one of our authorized distributors