


### Anti-Cytokeratin 19 antibody ab15463

★★★★★ [13 Abreviews](#) [74 References](#) [画像数 5](#)

#### 製品の概要

製品名	Anti-Cytokeratin 19 antibody
製品の詳細	Rabbit polyclonal to Cytokeratin 19
由来種	Rabbit
アプリケーション	<b>適用あり:</b> WB, IHC-P
種交差性	<b>交差種:</b> Human <b>交差が予測される動物種:</b> Mouse 
免疫原	Synthetic peptide within Human Cytokeratin 19 aa 300 to the C-terminus. The exact sequence is proprietary. Database link: <a href="#">P08727</a>
特記事項	<p><b>This product is FOR RESEARCH USE ONLY. For commercial use, please contact <a href="mailto:partnerships@abcam.com">partnerships@abcam.com</a>.</b></p> <p>The Life Science industry has been in the grips of a reproducibility crisis for a number of years. Abcam is leading the way in addressing this with our range of recombinant monoclonal antibodies and knockout edited cell lines for gold-standard validation. Please check that this product meets your needs before purchasing.</p> <p>If you have any questions, special requirements or concerns, please send us an inquiry and/or contact our Support team ahead of purchase. Recommended alternatives for this product can be found below, along with publications, customer reviews and Q&amp;As</p>

#### 製品の特性

製品の状態	Liquid
保存方法	Shipped at 4°C. Upon delivery aliquot and store at -20°C. Avoid freeze / thaw cycles.
バッファー	pH: 7.60 Preservative: 0.1% Sodium azide Constituents: PBS, 1% BSA
精製度	Immunogen affinity purified
ポリ/モノ	ポリクローナル
アイソタイプ	IgG

## アプリケーション

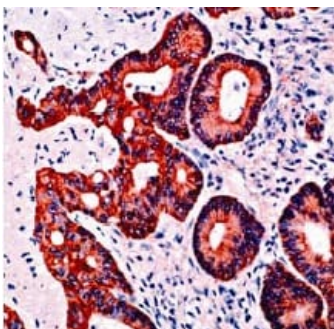
**The Abpromise guarantee**      **Abpromise保証は、** 次のテスト済みアプリケーションにおけるab15463の使用に適用されます  
アプリケーションノートには、推奨の開始希釈率がありますが、適切な希釈率につきましてはご検討ください。

アプリケーション	Abreviews	特記事項
WB		Use a concentration of 1 µg/ml. Detects a band of approximately 45 kDa (predicted molecular weight: 40 kDa).
IHC-P	★★★★★ (9)	1/100. Perform heat mediated antigen retrieval with citrate buffer pH 6 before commencing with IHC staining protocol. Boil in citrate buffer for 10 minutes, cool at room temperature for 20 minutes. After blocking, incubate primary antibody 1:100 for 10 minutes at room temperature.

## ターゲット情報

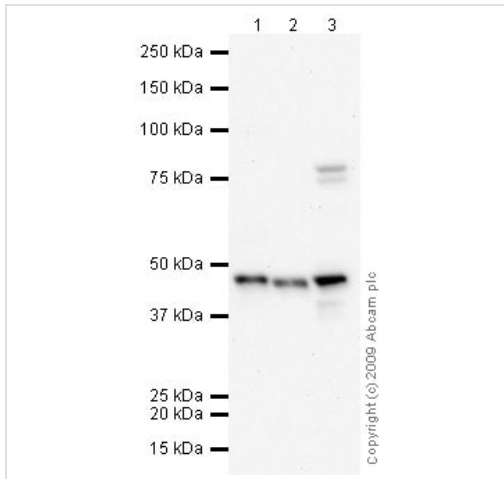
機能	Involved in the organization of myofibers. Together with KRT8, helps to link the contractile apparatus to dystrophin at the costameres of striated muscle.
組織特異性	Expressed in a defined zone of basal keratinocytes in the deep outer root sheath of hair follicles. Also observed in sweat gland and mammary gland ductal and secretory cells, bile ducts, gastrointestinal tract, bladder urothelium, oral epithelia, esophagus, ectocervical epithelium (at protein level). Expressed in epidermal basal cells, in nipple epidermis and a defined region of the hair follicle. Also seen in a subset of vascular wall cells in both the veins and artery of human umbilical cord, and in umbilical cord vascular smooth muscle. Observed in muscle fibers accumulating in the costameres of myoplasm at the sarcolemma in structures that contain dystrophin and spectrin.
配列類似性	Belongs to the intermediate filament family.
発生段階	Present in hair follicles at all stages of development.
ドメイン	This keratin differs from all other IF proteins in lacking the C-terminal tail domain.

## 画像



Human skin stained with anti-Cytokeratin 19 antibody (ab15463).

Immunohistochemistry (Formalin/PFA-fixed paraffin-embedded sections) - Anti-Cytokeratin 19 antibody (ab15463)



Western blot - Anti-Cytokeratin 19 antibody  
(ab15463)

**All lanes :** Anti-Cytokeratin 19 antibody (ab15463) at 1 µg/ml

**Lane 1 :** Human placenta tissue lysate - total protein (**ab29745**)

**Lane 2 :** HepG2 (Human hepatocellular liver carcinoma cell line)  
Whole Cell Lysate

**Lane 3 :** MDA-MB-361 (Human breast adenocarcinoma cell line)  
Whole Cell Lysate

Lysates/proteins at 10 µg per lane.

### Secondary

**All lanes :** Goat polyclonal to Rabbit IgG - H&L - Pre-Adsorbed  
(HRP) at 1/3000 dilution

**Predicted band size:** 40 kDa

**Observed band size:** 45 kDa

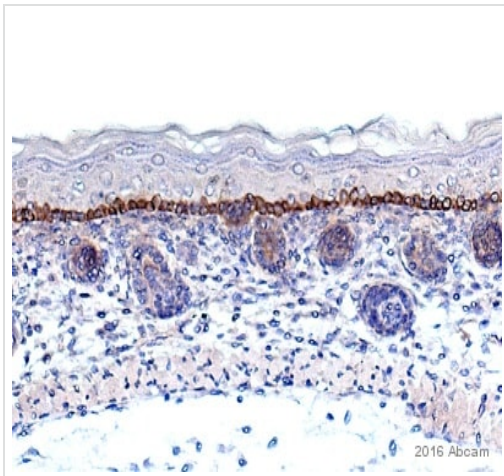
**Additional bands at:** 75 kDa. We are unsure as to the identity of these extra bands.



Immunohistochemistry (Formalin/PFA-fixed paraffin-  
embedded sections) - Anti-Cytokeratin 19 antibody  
(ab15463)

This image is courtesy of an Abreview by Carl Hobbs.

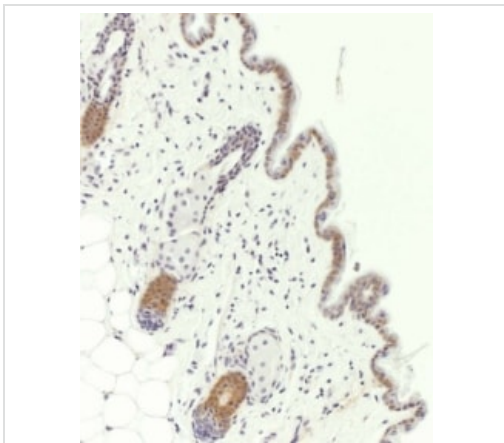
ab15463 staining Cytokeratin 19 in human colon tissue sections by Immunohistochemistry (IHC-P - paraformaldehyde-fixed, paraffin-embedded sections). Tissue was fixed with formaldehyde and blocked with 2% BSA for 10 minutes at 21°C; antigen retrieval was by heat mediation in a citrate buffer. Samples were incubated with primary antibody (1/500 in blocking buffer) for 16 hours at 22°C. A Biotin-conjugated Goat anti-rabbit IgG polyclonal (1/300) was used as the secondary antibody.



Immunohistochemistry (Formalin/PFA-fixed paraffin-embedded sections) - Anti-Cytokeratin 19 antibody (ab15463)

This image is courtesy of an abreview submitted by Carl Hobbs, King's College London, United Kingdom

Immunohistochemistry (Formalin/PFA-fixed paraffin-embedded sections) analysis of mouse developing skin tissue labeling Cytokeratin 19 with ab15463 at 1/500 dilution. The tissue was fixed with formaldehyde; heat-mediated antigen retrieval was performed using a citric acid. Tissue was blocked with 2% BSA for 10 minutes at 21°C. A polyclonal goat anti-rabbit IgG biotin conjugated antibody was used at 1/300 dilution. Image shows strong immunopositivity in the cytoplasm of basal cells of the epidermis and a moderate hair follicle cell positivity.



Immunohistochemistry (Formalin/PFA-fixed paraffin-embedded sections) - Anti-Cytokeratin 19 antibody (ab15463)

The image was kindly supplied as part of the review submitted by Linda Watson.

This image shows formalin-fixed mouse skin stained with Cytokeratin 19 antibody (1/50 dilution) after pepsin digestion.

### **Our Abpromise to you: Quality guaranteed and expert technical support**

---

- Replacement or refund for products not performing as stated on the datasheet
- Valid for 12 months from date of delivery
- Response to your inquiry within 24 hours
  
- We provide support in Chinese, English, French, German, Japanese and Spanish
- Extensive multi-media technical resources to help you
- We investigate all quality concerns to ensure our products perform to the highest standards

If the product does not perform as described on this datasheet, we will offer a refund or replacement. For full details of the Abpromise, please visit <https://www.abcam.co.jp/abpromise> or contact our technical team.

### **Terms and conditions**

---

- Guarantee only valid for products bought direct from Abcam or one of our authorized distributors