

Anti-Cytokeratin 18 (phospho S52) antibody ab63393

1 References [画像数 2](#)

製品の概要

製品名	Anti-Cytokeratin 18 (phospho S52) antibody
製品の詳細	Rabbit polyclonal to Cytokeratin 18 (phospho S52)
由来種	Rabbit
アプリケーション	適用あり: WB, ICC/IF
種交差性	交差種: Human
免疫原	Synthetic peptide corresponding to Human Cytokeratin 18 (phospho S52). Database link: P05783
ポジティブ・コントロール	Hela cells and extracts from HepG2 cells
特記事項	<p>The Life Science industry has been in the grips of a reproducibility crisis for a number of years. Abcam is leading the way in addressing this with our range of recombinant monoclonal antibodies and knockout edited cell lines for gold-standard validation. Please check that this product meets your needs before purchasing.</p> <p>If you have any questions, special requirements or concerns, please send us an inquiry and/or contact our Support team ahead of purchase. Recommended alternatives for this product can be found below, along with publications, customer reviews and Q&As</p>

製品の特性

製品の状態	Liquid
保存方法	Shipped at 4°C. Store at -20°C. Stable for 12 months at -20°C.
バッファー	<p>pH: 7.40</p> <p>Preservative: 0.02% Sodium azide</p> <p>Constituents: PBS, 50% Glycerol (glycerin, glycerine), 0.87% Sodium chloride</p> <p>Without Mg²⁺ and Ca²⁺</p>
精製度	Immunogen affinity purified
特記事項 (精製)	The antibody was affinity-purified from rabbit antiserum by affinity-chromatography using epitope-specific phosphopeptide. The antibody against non-phosphopeptide was removed by chromatography using non-phosphopeptide corresponding to the phosphorylation site.
ポリ/モノ	ポリクローナル
アイソタイプ	IgG

アプリケーション

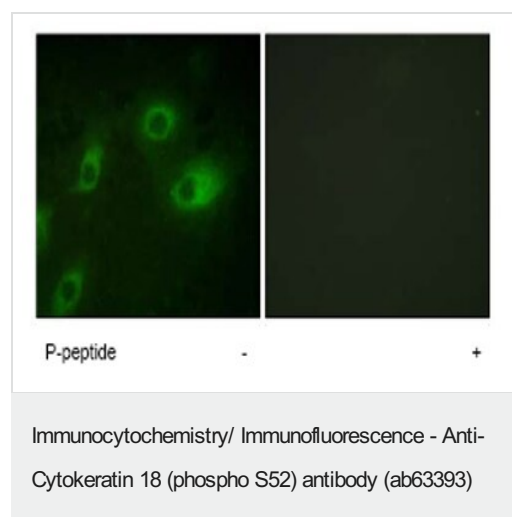
The Abpromise guarantee **Abpromise保証は、次のテスト済みアプリケーションにおけるab63393の使用に適用されます**
アプリケーションノートには、推奨の開始希釈率がありますが、適切な希釈率につきましてはご確認ください。

アプリケーション	Abreviews	特記事項
WB		1/500 - 1/1000. Detects a band of approximately 48 kDa (predicted molecular weight: 48 kDa).
ICC/IF		1/500 - 1/1000.

ターゲット情報

機能	Involved in the uptake of thrombin-antithrombin complexes by hepatic cells (By similarity). When phosphorylated, plays a role in filament reorganization. Involved in the delivery of mutated CFTR to the plasma membrane. Together with KRT8, is involved in interleukin-6 (IL-6)-mediated barrier protection.
組織特異性	Expressed in colon, placenta, liver and very weakly in exocervix. Increased expression observed in lymph nodes of breast carcinoma.
関連疾患	Defects in KRT18 are a cause of cirrhosis (CIRRH) [MIM:215600].
配列類似性	Belongs to the intermediate filament family.
翻訳後修飾	Phosphorylation at Ser-34 increases during mitosis. Hyperphosphorylated at Ser-53 in diseased cirrhosis liver. Phosphorylation increases by IL-6. Proteolytically cleaved by caspases during epithelial cell apoptosis. Cleavage occurs at Asp-238 by either caspase-3, caspase-6 or caspase-7. O-glycosylated at multiple sites; glycans consist of single N-acetylglucosamine residues.
細胞内局在	Cytoplasm > perinuclear region.

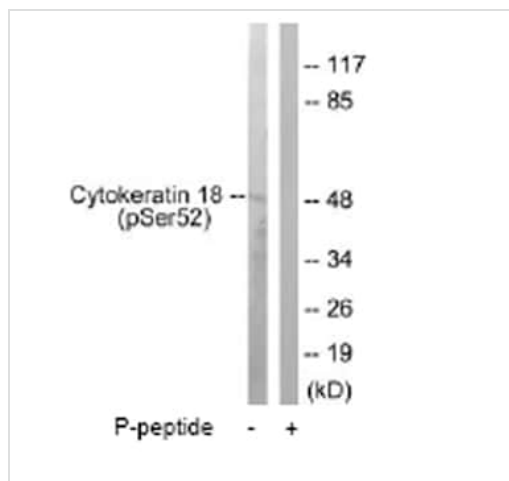
画像



Immunofluorescence analysis of HeLa cells, using ab63393 at a 1:500 dilution.

Left image untreated.

Right image treated with phospho peptide.



Western blot - Anti-Cytokeratin 18 (phospho S52) antibody (ab63393)

All lanes : Anti-Cytokeratin 18 (phospho S52) antibody (ab63393) at 1/500 dilution

Lane 1 : Extracts from HepG2 cells

Lane 2 : Extracts from HepG2 cells plus phospho peptide

Predicted band size: 48 kDa

Observed band size: 48 kDa

The amount of positive control loading for the WB is 5-30 ug of total protein. The amount of the peptide is 5-10 ug.

Please note: All products are "FOR RESEARCH USE ONLY. NOT FOR USE IN DIAGNOSTIC PROCEDURES"

Our Abpromise to you: Quality guaranteed and expert technical support

- Replacement or refund for products not performing as stated on the datasheet
- Valid for 12 months from date of delivery
- Response to your inquiry within 24 hours
- We provide support in Chinese, English, French, German, Japanese and Spanish
- Extensive multi-media technical resources to help you
- We investigate all quality concerns to ensure our products perform to the highest standards

If the product does not perform as described on this datasheet, we will offer a refund or replacement. For full details of the Abpromise, please visit <https://www.abcam.co.jp/abpromise> or contact our technical team.

Terms and conditions

- Guarantee only valid for products bought direct from Abcam or one of our authorized distributors