


Anti-Cytokeratin 18 antibody [RGE53] ab9217

★★★★★ [1 Abreviews](#) [7 References](#) [画像数 10](#)

製品の概要

製品名	Anti-Cytokeratin 18 antibody [RGE53]
製品の詳細	Mouse monoclonal [RGE53] to Cytokeratin 18
由来種	Mouse
特異性	This antibody reacts exclusively with cytokeratin 18 which is present in glandular epithelial cells of the digestive, respiratory, and urogenital tracts, endocrine and exocrine cells and mesothelial cells, as well as adenocarcinomas originating from them
アプリケーション	適用あり: Flow Cyt, IHC-Fr, WB
種交差性	交差種: Human, Pig, Zebrafish 交差が予測される動物種: Mouse, Rat, Rabbit, Chicken, Hamster, Dog 
免疫原	Full length protein corresponding to Human Cytokeratin 18. Cytoskeletal preparation of HeLa cells.
ポジティブ・コントロール	This antibody gave a positive signal in HeLa and MCF7 whole cell lysates.
特記事項	<p>The Life Science industry has been in the grips of a reproducibility crisis for a number of years. Abcam is leading the way in addressing this with our range of recombinant monoclonal antibodies and knockout edited cell lines for gold-standard validation. Please check that this product meets your needs before purchasing.</p> <p>If you have any questions, special requirements or concerns, please send us an inquiry and/or contact our Support team ahead of purchase. Recommended alternatives for this product can be found below, along with publications, customer reviews and Q&As</p>

製品の特性

製品の状態	Liquid
保存方法	Shipped at 4°C. Store at +4°C short term (1-2 weeks). Upon delivery aliquot. Store at -20°C or -80°C. Avoid freeze / thaw cycle.
バッファー	Preservative: 0.09% Sodium azide Constituent: PBS
精製度	Protein G purified
ポリ/モノ	モノクローナル
クローン名	RGE53

ミエローマ	unknown
アイソタイプ	IgG1

アプリケーション

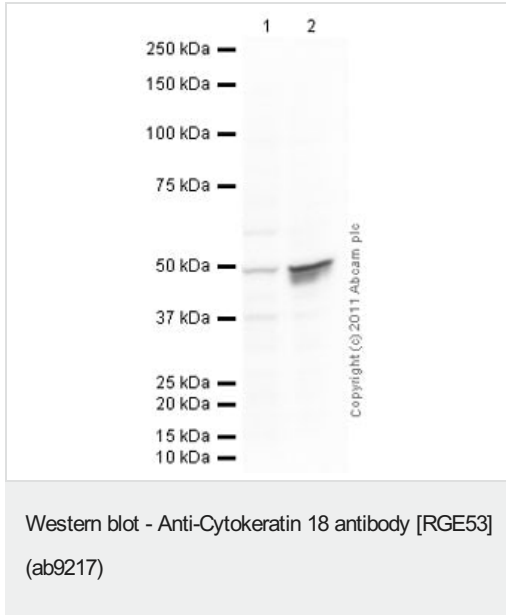
The Abpromise guarantee **Abpromise保証は、** 次のテスト済みアプリケーションにおけるab9217の使用に適用されます
アプリケーションノートには、推奨の開始希釈率がありますが、適切な希釈率につきましてはご検討ください。

アプリケーション	Abreviews	特記事項
Flow Cyt		Use 1µg for 10 ⁶ cells. ab170190 - Mouse monoclonal IgG1, is suitable for use as an isotype control with this antibody.
IHC-Fr		1/100 - 1/200.
WB		Use a concentration of 5 µg/ml. Detects a band of approximately 48 kDa (predicted molecular weight: 48 kDa).

ターゲット情報

機能	Involved in the uptake of thrombin-antithrombin complexes by hepatic cells (By similarity). When phosphorylated, plays a role in filament reorganization. Involved in the delivery of mutated CFTR to the plasma membrane. Together with KRT8, is involved in interleukin-6 (IL-6)-mediated barrier protection.
組織特異性	Expressed in colon, placenta, liver and very weakly in exocervix. Increased expression observed in lymph nodes of breast carcinoma.
関連疾患	Defects in KRT18 are a cause of cirrhosis (CIRRH) [MIM:215600].
配列類似性	Belongs to the intermediate filament family.
翻訳後修飾	Phosphorylation at Ser-34 increases during mitosis. Hyperphosphorylated at Ser-53 in diseased cirrhosis liver. Phosphorylation increases by IL-6. Proteolytically cleaved by caspases during epithelial cell apoptosis. Cleavage occurs at Asp-238 by either caspase-3, caspase-6 or caspase-7. O-glycosylated at multiple sites; glycans consist of single N-acetylglucosamine residues.
細胞内局在	Cytoplasm > perinuclear region.

画像



All lanes : Anti-Cytokeratin 18 antibody [RGE53] (ab9217) at 5 $\mu\text{g/ml}$

Lane 1 : HeLa (Human epithelial carcinoma cell line) Whole Cell Lysate

Lane 2 : MCF7 (Human breast adenocarcinoma cell line) Whole Cell Lysate

Lysates/proteins at 20 μg per lane.

Secondary

All lanes : Goat Anti-Mouse IgG H&L (HRP) preadsorbed ([ab97040](#)) at 1/5000 dilution

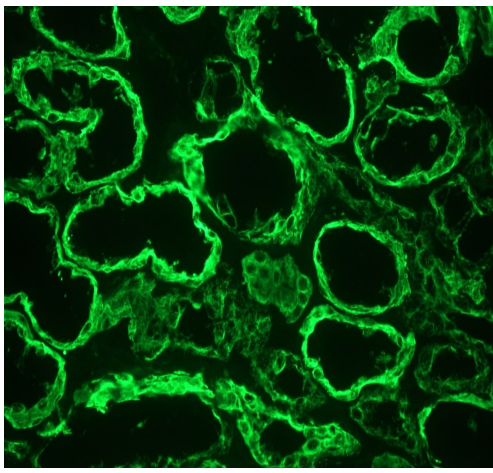
Developed using the ECL technique.

Performed under reducing conditions.

Predicted band size: 48 kDa

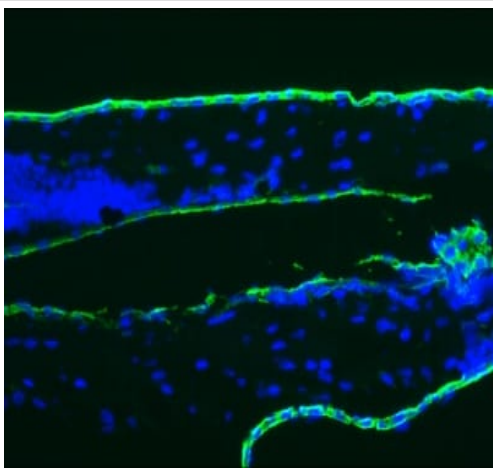
Observed band size: 48 kDa

Exposure time: 30 seconds



Immunohistochemistry on frozen section of human kidney epithelium.

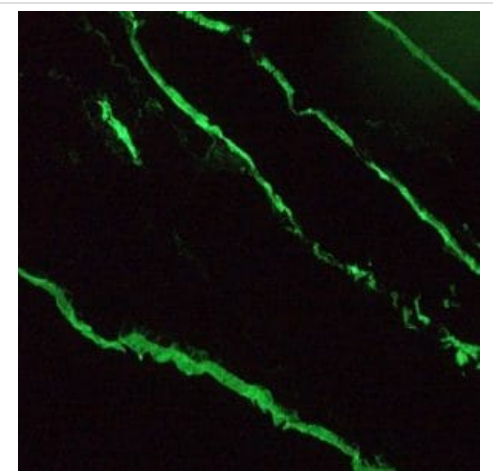
Immunohistochemistry (Frozen sections) - Anti-Cytokeratin 18 antibody [RGE53] (ab9217)



Immunofluorescence staining images of 9 day old zebrafish embryos.

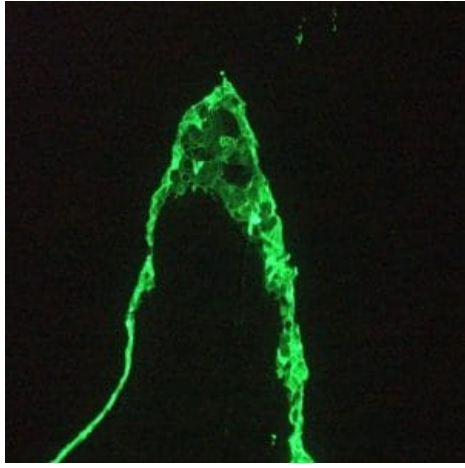
ab9217 reacts with with intestinal epithelium and epidermis. Frozen sample treated with Acetone:Methanol 1:1, antibody diluted 1/100 and incubated for 45 minutes at room temperature.0

Immunohistochemistry (Frozen sections) - Anti-Cytokeratin 18 antibody [RGE53] (ab9217)



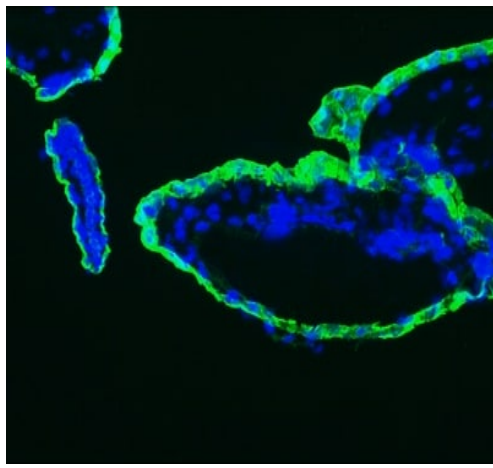
immunofluorescence staining of epithelial tissues in a 2 days old zebrafish embryo.

Immunohistochemistry (Frozen sections) - Anti-Cytokeratin 18 antibody [RGE53] (ab9217)



Immunohistochemistry (Frozen sections) - Anti-Cytokeratin 18 antibody [RGE53] (ab9217)

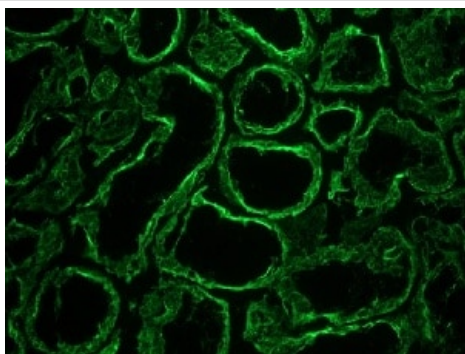
Immunofluorescence staining of 1 month old zebrafish embryo.



Immunohistochemistry (Frozen sections) - Anti-Cytokeratin 18 antibody [RGE53] (ab9217)

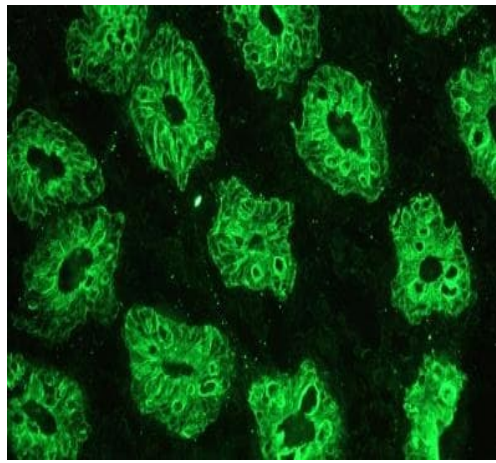
Immunofluorescence staining images of 9 day old zebrafish embryos.

ab9217 reacts with intestinal epithelium and epidermis. Frozen sample treated with Acetone:Methanol 1:1, antibody diluted 1/100 and incubated for 45 minutes at room temperature.



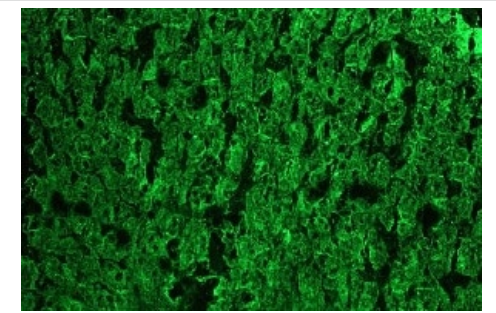
Immunohistochemistry (Frozen sections) - Anti-Cytokeratin 18 antibody [RGE53] (ab9217)

Immunohistochemistry on frozen section of human kidney epithelium



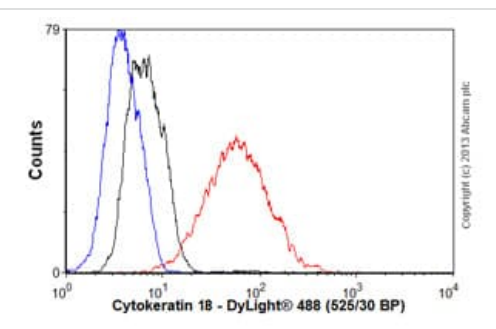
Immunohistochemistry (Frozen sections) - Anti-Cytokeratin 18 antibody [RGE53] (ab9217)

Immunohistochemistry on frozen section of human colon



Immunohistochemistry (Frozen sections) - Anti-Cytokeratin 18 antibody [RGE53] (ab9217)

Immunohistochemistry on frozen section of swine liver hepatocytes



Flow Cytometry - Anti-Cytokeratin 18 antibody [RGE53] (ab9217)

Overlay histogram showing MCF7 cells stained with ab9217 (red line). The cells were fixed with 4% paraformaldehyde (10 min) and then permeabilized with 0.1% PBS-Tween for 20 min. The cells were then incubated in 1x PBS / 10% normal goat serum / 0.3M glycine to block non-specific protein-protein interactions followed by the antibody (ab9217, $1\mu\text{g}/1\times 10^6$ cells) for 30 min at 22°C. The secondary antibody used was DyLight® 488 goat anti-mouse IgG (H+L) ([ab96879](#)) at 1/500 dilution for 30 min at 22°C. Isotype control antibody (black line) was mouse IgG1 [ICIGG1] ([ab91353](#), $2\mu\text{g}/1\times 10^6$ cells) used under the same conditions. Unlabelled sample (blue line). Acquisition of >5,000 events were collected using a 20mW Argon ion laser (488nm) and 525/30 bandpass filter. This antibody gave a positive signal in MCF7 cells fixed with 80% methanol (5 min)/permeabilized with 0.1% PBS-Tween for 20 min used under the same conditions.

Please note: All products are "FOR RESEARCH USE ONLY. NOT FOR USE IN DIAGNOSTIC PROCEDURES"

Our Abpromise to you: Quality guaranteed and expert technical support

- Replacement or refund for products not performing as stated on the datasheet
- Valid for 12 months from date of delivery
- Response to your inquiry within 24 hours

- We provide support in Chinese, English, French, German, Japanese and Spanish
- Extensive multi-media technical resources to help you
- We investigate all quality concerns to ensure our products perform to the highest standards

If the product does not perform as described on this datasheet, we will offer a refund or replacement. For full details of the Abpromise, please visit <https://www.abcam.co.jp/abpromise> or contact our technical team.

Terms and conditions

- Guarantee only valid for products bought direct from Abcam or one of our authorized distributors