



Anti-Cytokeratin 13 antibody ab79279

2 References [画像数 1](#)

製品の概要

製品名	Anti-Cytokeratin 13 antibody
製品の詳細	Goat polyclonal to Cytokeratin 13
由来種	Goat
特異性	ab79279 is expected to recognize the reported isoform a (NP_705694.2) only.
アプリケーション	適用あり: WB
種交差性	交差種: Human
免疫原	Synthetic peptide: C-TSNASGRRTSDVRRP , corresponding to C terminal amino acids 444-458 of Human Cytokeratin 13 (NP_705694.2)  Run BLAST with  Run BLAST with
ポジティブ・コントロール	Human Lung, Skeletal Muscle and Skin lysates.
特記事項	<p>The Life Science industry has been in the grips of a reproducibility crisis for a number of years. Abcam is leading the way in addressing this with our range of recombinant monoclonal antibodies and knockout edited cell lines for gold-standard validation. Please check that this product meets your needs before purchasing.</p> <p>If you have any questions, special requirements or concerns, please send us an inquiry and/or contact our Support team ahead of purchase. Recommended alternatives for this product can be found below, along with publications, customer reviews and Q&As</p>

製品の特性

製品の状態	Liquid
保存方法	Shipped at 4°C. Upon delivery aliquot and store at -20°C. Avoid repeated freeze / thaw cycles.
バッファー	pH: 7.30 Preservative: 0.02% Sodium azide Constituents: 0.5% BSA, 0.5% Tris buffered saline
精製度	Immunogen affinity purified
特記事項 (精製)	ab79279 was purified from goat serum by ammonium sulphate precipitation followed by antigen affinity chromatography using the immunizing peptide.
ポリ/モノ	ポリクローナル

アイソタイプ

IgG

アプリケーション

The Abpromise guarantee

Abpromise保証は、次のテスト済みアプリケーションにおけるab79279の使用に適用されます

アプリケーションノートには、推奨の開始希釈率がありますが、適切な希釈率につきましてはご検討ください。

アプリケーション	Abreviews	特記事項
WB		

追加情報

Peptide ELISA: Antibody detection limit dilution 1/128000.

WB: Use at a concentration of 0.1 - 0.3 µg/ml. Detects a band of approximately 55 kDa (predicted molecular weight: 50 kDa).

Not yet tested in other applications.

Optimal dilutions/concentrations should be determined by the end user.

ターゲット情報

組織特異性

Expressed in some epidermal sweat gland ducts (at protein level) and in exocervix, esophagus and placenta.

関連疾患

Defects in KRT13 are a cause of white sponge nevus of cannon (WSN) [MIM:193900]. WSN is a rare autosomal dominant disorder which predominantly affects non-cornified stratified squamous epithelia. Clinically, it is characterized by the presence of soft, white, and spongy plaques in the oral mucosa. The characteristic histopathologic features are epithelial thickening, parakeratosis, and vacuolization of the suprabasal layer of oral epithelial keratinocytes. Less frequently the mucous membranes of the nose, esophagus, genitalia and rectum are involved.

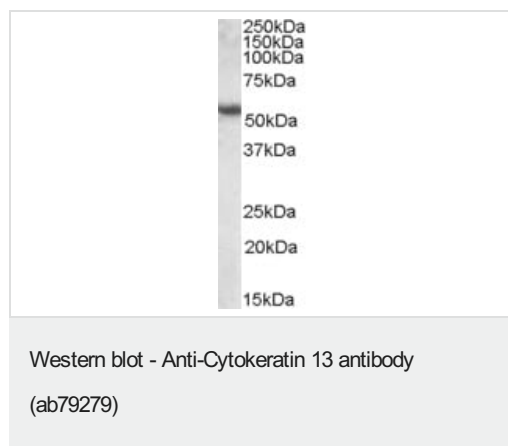
配列類似性

Belongs to the intermediate filament family.

翻訳後修飾

O-glycosylated; glycans consist of single N-acetylglucosamine residues.

画像



Anti-Cytokeratin 13 antibody (ab79279) at 0.1 µg/ml + Human Lung lysate (in RIPA buffer) at 35 µg

Predicted band size: 50 kDa

Observed band size: 55 kDa

The observed molecular weight corresponds to earlier findings in literature with different antibodies (Sajjan, Microbiology. 2003 Apr;149(Pt 4):961-71.; PMID: 12686638)

Please note: All products are "FOR RESEARCH USE ONLY. NOT FOR USE IN DIAGNOSTIC PROCEDURES"

Our Abpromise to you: Quality guaranteed and expert technical support

- Replacement or refund for products not performing as stated on the datasheet
- Valid for 12 months from date of delivery
- Response to your inquiry within 24 hours

- We provide support in Chinese, English, French, German, Japanese and Spanish
- Extensive multi-media technical resources to help you
- We investigate all quality concerns to ensure our products perform to the highest standards

If the product does not perform as described on this datasheet, we will offer a refund or replacement. For full details of the Abpromise, please visit <https://www.abcam.co.jp/abpromise> or contact our technical team.

Terms and conditions

- Guarantee only valid for products bought direct from Abcam or one of our authorized distributors