

Anti-Cytokeratin 13 antibody ab154346

1 References [画像数 3](#)

医薬用外劇物

製品の概要

製品名	Anti-Cytokeratin 13 antibody
製品の詳細	Rabbit polyclonal to Cytokeratin 13
由来種	Rabbit
アプリケーション	適用あり: WB, IHC-P, ICC/IF
種交差性	交差種: Human
免疫原	Recombinant fragment, corresponding to a region within amino acids 259-458 of Human Cytokeratin 13
ポジティブ・コントロール	MCF7 whole cell lysate; MCF7 cells; CAL27 xenograft
特記事項	<p>The Life Science industry has been in the grips of a reproducibility crisis for a number of years. Abcam is leading the way in addressing this with our range of recombinant monoclonal antibodies and knockout edited cell lines for gold-standard validation. Please check that this product meets your needs before purchasing.</p> <p>If you have any questions, special requirements or concerns, please send us an inquiry and/or contact our Support team ahead of purchase. Recommended alternatives for this product can be found below, along with publications, customer reviews and Q&As</p>

製品の特性

製品の状態	Liquid
保存方法	Shipped at 4°C. Upon delivery aliquot. Store at -20°C or -80°C. Avoid freeze / thaw cycle.
バッファー	<p>pH: 7.00</p> <p>Preservative: 0.01% Thimerosal (merthiolate)</p> <p>Constituents: 78.99% PBS, 1% BSA, 20% Glycerol (glycerin, glycerine)</p>
精製度	Immunogen affinity purified
ポリ/モノ	ポリクローナル
アイソタイプ	IgG

アプリケーション

The Abpromise guarantee

Abpromise保証は、次のテスト済みアプリケーションにおけるab154346の使用に適用されます

アプリケーションノートには、推奨の開始希釈率がありますが、適切な希釈率につきましてはご確認ください。

アプリケーション	Abreviews	特記事項
WB		1/1000 - 1/10000. Predicted molecular weight: 50 kDa.
IHC-P		1/100 - 1/1000. Perform heat mediated antigen retrieval with citrate buffer pH 6 before commencing with IHC staining protocol.
ICC/IF		1/100 - 1/1000.

ターゲット情報

組織特異性

Expressed in some epidermal sweat gland ducts (at protein level) and in exocervix, esophagus and placenta.

関連疾患

Defects in KRT13 are a cause of white sponge nevus of cannon (WSN) [MIM:193900]. WSN is a rare autosomal dominant disorder which predominantly affects non-cornified stratified squamous epithelia. Clinically, it is characterized by the presence of soft, white, and spongy plaques in the oral mucosa. The characteristic histopathologic features are epithelial thickening, parakeratosis, and vacuolization of the suprabasal layer of oral epithelial keratinocytes. Less frequently the mucous membranes of the nose, esophagus, genitalia and rectum are involved.

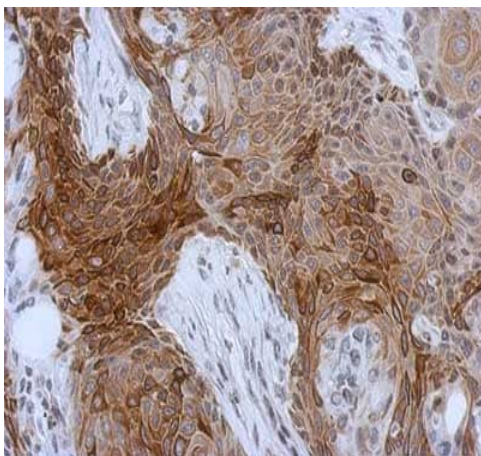
配列類似性

Belongs to the intermediate filament family.

翻訳後修飾

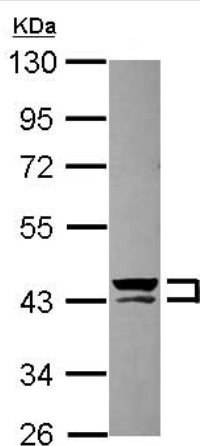
O-glycosylated; glycans consist of single N-acetylglucosamine residues.

画像



Immunohistochemical analysis of paraffin-embedded CAL27 xenograft labeling Cytokeratin 13 with ab154346 at 1/500 dilution

Immunohistochemistry (Formalin/PFA-fixed paraffin-embedded sections) - Anti-Cytokeratin 13 antibody (ab154346)

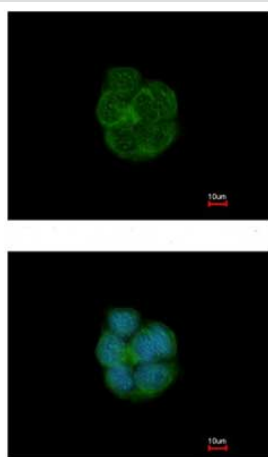


Western blot - Anti-Cytokeratin 13 antibody
(ab154346)

Anti-Cytokeratin 13 antibody (ab154346) at 1/5000 dilution + MCF7
whole cell lysate at 30 µg

Predicted band size: 50 kDa

10% SDS PAGE



Immunocytochemistry/ Immunofluorescence - Anti-
Cytokeratin 13 antibody (ab154346)

Immunofluorescence analysis of methanol-fixed MCF7 cells labeling
Cytokeratin 13 with ab154346 at 1/200 dilution

Please note: All products are "FOR RESEARCH USE ONLY. NOT FOR USE IN DIAGNOSTIC PROCEDURES"

Our Abpromise to you: Quality guaranteed and expert technical support

- Replacement or refund for products not performing as stated on the datasheet
- Valid for 12 months from date of delivery
- Response to your inquiry within 24 hours
- We provide support in Chinese, English, French, German, Japanese and Spanish
- Extensive multi-media technical resources to help you
- We investigate all quality concerns to ensure our products perform to the highest standards

If the product does not perform as described on this datasheet, we will offer a refund or replacement. For full details of the Abpromise,

please visit <https://www.abcam.co.jp/abpromise> or contact our technical team.

Terms and conditions

- Guarantee only valid for products bought direct from Abcam or one of our authorized distributors