

Anti-Cytokeratin 10 antibody [RKSE60] ab9025

★★★★★ [4 Abreviews](#) [24 References](#) [画像数 2](#)

製品の概要

製品名	Anti-Cytokeratin 10 antibody [RKSE60]
製品の詳細	Mouse monoclonal [RKSE60] to Cytokeratin 10
由来種	Mouse
特異性	This antibody reacts exclusively with cytokeratin 10 which is present in keratinizing stratified epithelia and in differentiated areas of highly differentiated squamous cell carcinomas
アプリケーション	適用あり: IHC-Fr, ICC/IF
種交差性	交差種: Pig, Zebrafish
免疫原	Full length native protein (purified) corresponding to Human Cytokeratin 10. Cytokeratins from the human epidermis.
特記事項	<p>The Life Science industry has been in the grips of a reproducibility crisis for a number of years. Abcam is leading the way in addressing this with our range of recombinant monoclonal antibodies and knockout edited cell lines for gold-standard validation. Please check that this product meets your needs before purchasing.</p> <p>If you have any questions, special requirements or concerns, please send us an inquiry and/or contact our Support team ahead of purchase. Recommended alternatives for this product can be found below, along with publications, customer reviews and Q&As</p>

製品の特性

製品の状態	Liquid
保存方法	Shipped at 4°C. Store at +4°C short term (1-2 weeks). Upon delivery aliquot. Store at -20°C or -80°C. Avoid freeze / thaw cycle.
バッファー	Preservative: 0.09% Sodium azide Constituent: PBS
精製度	Protein G purified
ポリ/モノ	モノクローナル
クローン名	RKSE60
ミエローマ	Sp2/0
アイソタイプ	IgG1

アプリケーション

The Abpromise guarantee Abpromise保証は、 次のテスト済みアプリケーションにおけるab9025の使用に適用されます
アプリケーションノートには、推奨の開始希釈率がありますが、適切な希釈率につきましてはご検討ください。

アプリケーション	Abreviews	特記事項
IHC-Fr	★★★★★ (2)	Use at an assay dependent concentration.
ICC/IF		Use at an assay dependent concentration.

ターゲット情報

組織特異性

Seen in all suprabasal cell layers including stratum corneum.

関連疾患

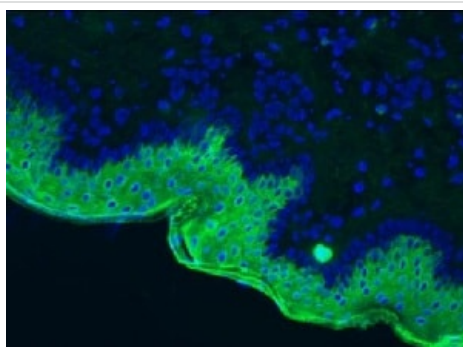
Defects in KRT10 are a cause of bullous congenital ichthyosiform erythroderma (BCIE) [MIM:113800]; also known as epidermolytic hyperkeratosis (EHK) or bullous erythroderma ichthyosiformis congenita of Brocq. BCIE is an autosomal dominant skin disorder characterized by widespread blistering and an ichthyotic erythroderma at birth that persist into adulthood. Histologically there is a diffuse epidermolytic degeneration in the lower spinous layer of the epidermis. Within a few weeks from birth, erythroderma and blister formation diminish and hyperkeratoses develop.

Defects in KRT10 are a cause of ichthyosis annular epidermolytic (AEI) [MIM:607602]; also known as cyclic ichthyosis with epidermolytic hyperkeratosis. AEI is a skin disorder resembling bullous congenital ichthyosiform erythroderma. Affected individuals present with bullous ichthyosis in early childhood and hyperkeratotic lichenified plaques in the flexural areas and extensor surfaces at later ages. The feature that distinguishes AEI from BCIE is dramatic episodes of flares of annular polycyclic plaques with scale, which coalesce to involve most of the body surface and can persist for several weeks or even months.

配列類似性

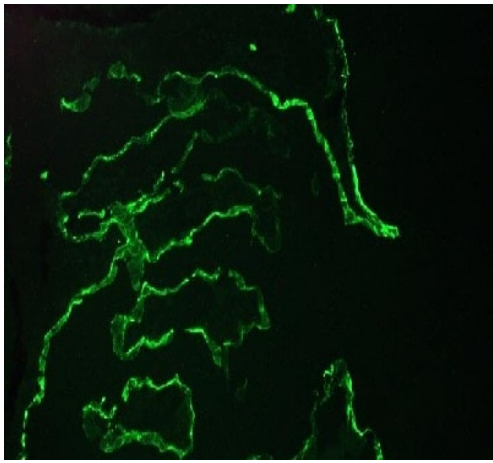
Belongs to the intermediate filament family.

画像



Immunohistochemistry on frozen section of swine skin: positive staining of the keratinizing layer

Immunohistochemistry (Frozen sections) - Anti-Cytokeratin 10 antibody [RKSE60] (ab9025)



Immunofluorescence staining of a 7 days old zebrafish embryo

Immunocytochemistry/ Immunofluorescence - Anti-Cytokeratin 10 antibody [RKSE60] (ab9025)

Please note: All products are "FOR RESEARCH USE ONLY. NOT FOR USE IN DIAGNOSTIC PROCEDURES"

Our Abpromise to you: Quality guaranteed and expert technical support

- Replacement or refund for products not performing as stated on the datasheet
- Valid for 12 months from date of delivery
- Response to your inquiry within 24 hours
- We provide support in Chinese, English, French, German, Japanese and Spanish
- Extensive multi-media technical resources to help you
- We investigate all quality concerns to ensure our products perform to the highest standards

If the product does not perform as described on this datasheet, we will offer a refund or replacement. For full details of the Abpromise, please visit <https://www.abcam.co.jp/abpromise> or contact our technical team.

Terms and conditions

- Guarantee only valid for products bought direct from Abcam or one of our authorized distributors