

Anti-Cytokeratin 10 + 13 antibody [DE-K13] ab9383

★★★★★ [2 Abreviews](#) [1 References](#) [画像数 1](#)

製品の概要

製品名	Anti-Cytokeratin 10 + 13 antibody [DE-K13]
製品の詳細	Mouse monoclonal [DE-K13] to Cytokeratin 10 + 13
由来種	Mouse
特異性	This antibody reacts with cytokeratin 10 and 13 in fixed cells and frozen tissue, but exclusively with cytokeratin 13 in formalin fixed paraffin embedded tissue.
アプリケーション	適用あり: IHC-Fr
種交差性	交差種: Zebrafish
免疫原	Full length protein corresponding to Human Cytokeratin 10 + 13. Cytoskeletal preparation extracted from human ectocervical epithelium
特記事項	<p>The Life Science industry has been in the grips of a reproducibility crisis for a number of years. Abcam is leading the way in addressing this with our range of recombinant monoclonal antibodies and knockout edited cell lines for gold-standard validation. Please check that this product meets your needs before purchasing.</p> <p>If you have any questions, special requirements or concerns, please send us an inquiry and/or contact our Support team ahead of purchase. Recommended alternatives for this product can be found below, along with publications, customer reviews and Q&As</p>

製品の特性

製品の状態	Liquid
保存方法	Shipped at 4°C. Store at +4°C short term (1-2 weeks). Upon delivery aliquot. Store at -20°C or -80°C. Avoid freeze / thaw cycle.
バッファー	Preservative: 0.09% Sodium azide Constituent: PBS
精製度	Protein A purified
ポリ/モノ	モノクローナル
クローン名	DE-K13
ミエローマ	Sp2/0
アイソタイプ	IgG2a
軽鎖の種類	kappa

アプリケーション

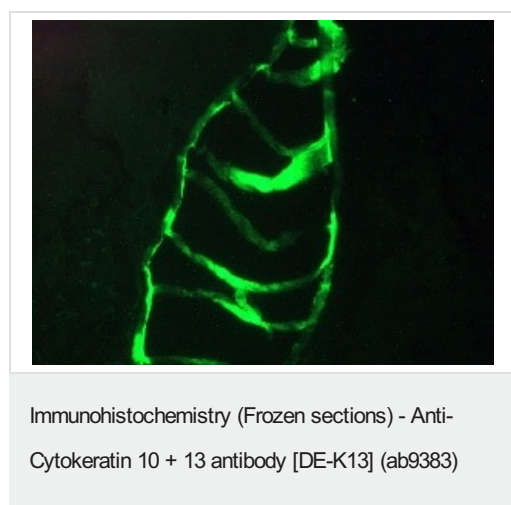
The Abpromise guarantee Abpromise保証は、次のテスト済みアプリケーションにおけるab9383の使用に適用されます
アプリケーションノートには、推奨の開始希釈率がありますが、適切な希釈率につきましてはご検討ください。

アプリケーション	Abreviews	特記事項
IHC-Fr	★★★★☆ (1)	Use at an assay dependent concentration. Reacts with cytokeratin 10 and 13 in frozen tissues.

ターゲット情報

組織特異性	Seen in all suprabasal cell layers including stratum corneum.
関連疾患	Epidermolytic hyperkeratosis Ichthyosis annular epidermolytic Erythroderma, ichthyosiform, congenital reticular
配列類似性	Belongs to the intermediate filament family.

画像



Immunofluorescence staining of a 7 days old zebrafish embryo

Please note: All products are "FOR RESEARCH USE ONLY. NOT FOR USE IN DIAGNOSTIC PROCEDURES"

Our Abpromise to you: Quality guaranteed and expert technical support

- Replacement or refund for products not performing as stated on the datasheet
- Valid for 12 months from date of delivery
- Response to your inquiry within 24 hours
- We provide support in Chinese, English, French, German, Japanese and Spanish
- Extensive multi-media technical resources to help you

- We investigate all quality concerns to ensure our products perform to the highest standards

If the product does not perform as described on this datasheet, we will offer a refund or replacement. For full details of the Abpromise, please visit <https://www.abcam.co.jp/abpromise> or contact our technical team.

Terms and conditions

- Guarantee only valid for products bought direct from Abcam or one of our authorized distributors