

Anti-Cytochrome C antibody [EPR1327] ab133504

リコンビナント **RabMAb**

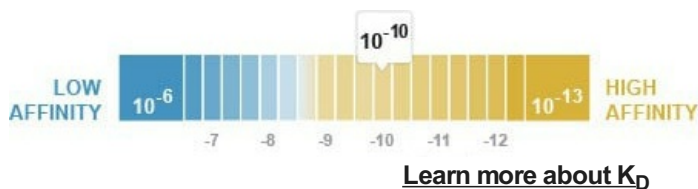
★★★★★ **2 Abreviews** **197 References** 画像数 **14**

製品の概要

| | |
|--------------|---|
| 製品名 | Anti-Cytochrome C antibody [EPR1327] |
| 製品の詳細 | Rabbit monoclonal [EPR1327] to Cytochrome C |
| 由来種 | Rabbit |
| アプリケーション | 適用あり: WB, IHC-P, ICC/IF, IP |
| 種交差性 | 交差種: Mouse, Rat, Human |
| 免疫原 | Synthetic peptide within Human Cytochrome C aa 1-100. The exact sequence is proprietary. Database link: P99999 |
| ポジティブ・コントロール | WB: Human fetal kidney and fetal heart tissue lysate. Rat and mouse brain tissue lysate. Molt4 and SH-SY5Y cell lysate. Human heart, kidney and spleen lysate. ICC/IF: SH-SY5Y and HeLa cells. IHC-P: Human cervical carcinoma tissue. Mouse liver tissue. Human and rat kidney tissue. IP: Molt-4 cells. |
| 特記事項 | <p>This product is a recombinant monoclonal antibody, which offers several advantages including:</p> <ul style="list-style-type: none"> - High batch-to-batch consistency and reproducibility - Improved sensitivity and specificity - Long-term security of supply - Animal-free production <p>For more information see here.</p> <p>Our RabMAb[®] technology is a patented hybridoma-based technology for making rabbit monoclonal antibodies. For details on our patents, please refer to RabMAb[®] patents.</p> |

製品の特性

| | |
|-------------------------|--|
| 製品の状態 | Liquid |
| 保存方法 | Shipped at 4°C. Store at -20°C. Stable for 12 months at -20°C. |
| 解離定数 (K _D 値) | K _D = 1.29 x 10 ⁻¹⁰ M |



| | |
|--------|---|
| バッファー | pH: 7.2 Preservative: 0.01% Sodium azide Constituents: 40% Glycerol, 0.05% BSA, 59% PBS |
| 精製度 | Protein A purified |
| ポリ/モノ | モノクローナル |
| クローン名 | EPR1327 |
| アイソタイプ | IgG |

アプリケーション

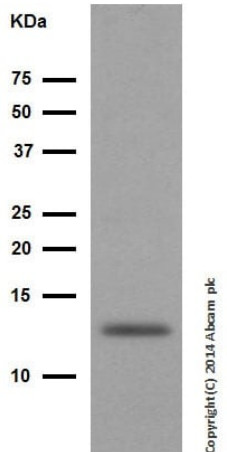
The Abpromise guarantee **Abpromise保証は、**次のテスト済みアプリケーションにおけるab133504の使用に適用されます
アプリケーションノートには、推奨の開始希釈率がありますが、適切な希釈率につきましてはご確認ください。

| アプリケーション | Abreviews | 特記事項 |
|----------|-----------|---|
| WB | ★★★★★ (1) | 1/5000. Detects a band of approximately 14 kDa (predicted molecular weight: 11 kDa). |
| IHC-P | | 1/250 - 1/500. Perform heat mediated antigen retrieval before commencing with IHC staining protocol. See IHC antigen retrieval protocols . |
| ICC/IF | ★★★★★ (1) | 1/100. |
| IP | | 1/30. |

ターゲット情報

| | |
|-------|---|
| 機能 | Electron carrier protein. The oxidized form of the cytochrome c heme group can accept an electron from the heme group of the cytochrome c1 subunit of cytochrome reductase. Cytochrome c then transfers this electron to the cytochrome oxidase complex, the final protein carrier in the mitochondrial electron-transport chain. Plays a role in apoptosis. Suppression of the anti-apoptotic members or activation of the pro-apoptotic members of the Bcl-2 family leads to altered mitochondrial membrane permeability resulting in release of cytochrome c into the cytosol. Binding of cytochrome c to Apaf-1 triggers the activation of caspase-9, which then accelerates apoptosis by activating other caspases. |
| 関連疾患 | Defects in CYCS are the cause of thrombocytopenia type 4 (THC4) [MIM:612004]; also known as autosomal dominant thrombocytopenia type 4. Thrombocytopenia is the presence of relatively few platelets in blood. THC4 is a non-syndromic form of thrombocytopenia. Clinical manifestations of thrombocytopenia are absent or mild. THC4 may be caused by dysregulated platelet formation. |
| 配列類似性 | Belongs to the cytochrome c family. |
| 翻訳後修飾 | Binds 1 heme group per subunit. |
| 細胞内局在 | Mitochondrion matrix. |

画像



Western blot - Anti-Cytochrome C antibody
[EPR1327] (ab133504)

Anti-Cytochrome C antibody [EPR1327] (ab133504) at 1/5000
dilution (purified) + Human fetal kidney tissue lysate at 10 µg

Secondary

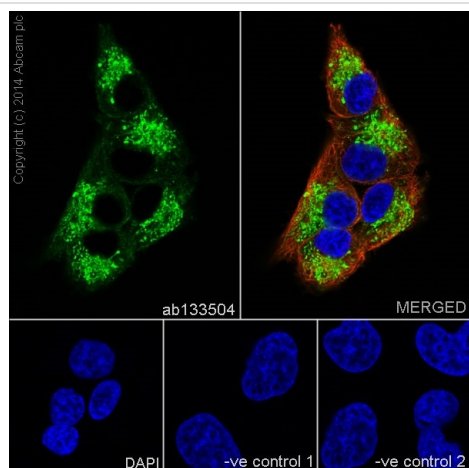
HRP goat anti-rabbit (H+L) at 1/1000 dilution

Predicted band size: 11 kDa

Observed band size: 14 kDa

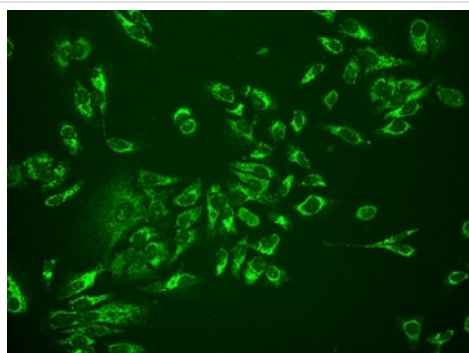
Blocking buffer: 5% NFDM/TBST

Dilution buffer: 5% NFDM/TBST



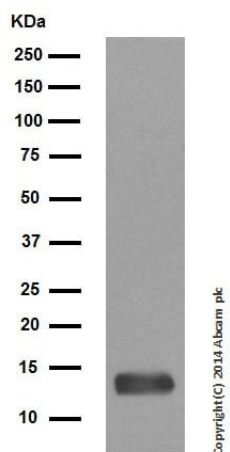
Immunocytochemistry/ Immunofluorescence - Anti-
Cytochrome C antibody [EPR1327] (ab133504)

Immunofluorescence staining of SH-SY5Y cells with
purified ab133504 at a working dilution of 1 in 100, counter-stained
with DAPI. The secondary antibody was Alexa Fluor® 488 goat anti
rabbit (**ab150077**), used at a dilution of 1 in 500. **ab7291** was used
to stain tubulin, and this is shown in the top right hand panel. The
cells were fixed in 4% PFA and permeabilized using 0.1% Triton X
100. The negative control is shown in bottom middle and right hand
panels - for the negative controls, purified ab133504 was used at a
dilution of 1/200 followed by an Alexa Fluor® 594 goat anti-mouse
antibody at a dilution of 1/500.



Immunocytochemistry/ Immunofluorescence - Anti-
Cytochrome C antibody [EPR1327] (ab133504)

Immunofluorescent analysis of HeLa (Human epithelial cell line from
cervix adenocarcinoma) cells labelling Cytochrome C with
unpurified ab133504 at 1/100 dilution.



Western blot - Anti-Cytochrome C antibody
[EPR1327] (ab133504)

Anti-Cytochrome C antibody [EPR1327] (ab133504) at 1/5000
dilution (purified) + Human fetal heart tissue lysate at 10 µg

Secondary

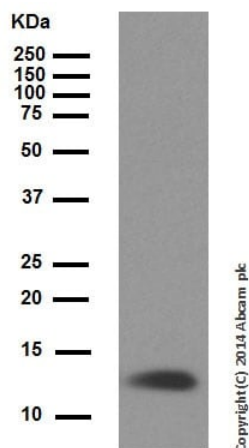
HRP goat anti-rabbit (H+L) at 1/1000 dilution

Predicted band size: 11 kDa

Observed band size: 14 kDa

Blocking buffer: 5% NFDM/TBST

Dilution buffer: 5% NFDM/TBST



Western blot - Anti-Cytochrome C antibody
[EPR1327] (ab133504)

Anti-Cytochrome C antibody [EPR1327] (ab133504) at 1/5000
dilution (purified) + Rat brain tissue lysate at 1/1000 dilution

Secondary

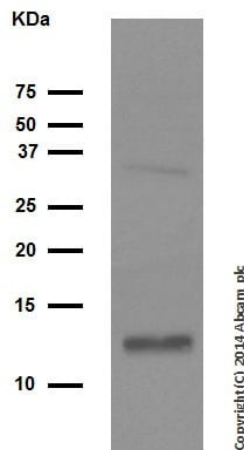
HRP goat anti-rabbit (H+L) at 1/1000 dilution

Predicted band size: 11 kDa

Observed band size: 14 kDa

Blocking buffer: 5% NFDM/TBST

Dilution buffer: 5% NFDM/TBST



Western blot - Anti-Cytochrome C antibody
[EPR1327] (ab133504)

Anti-Cytochrome C antibody [EPR1327] (ab133504) at 1/50000
dilution (purified) + Mouse brain tissue lysate at 10 µg

Secondary

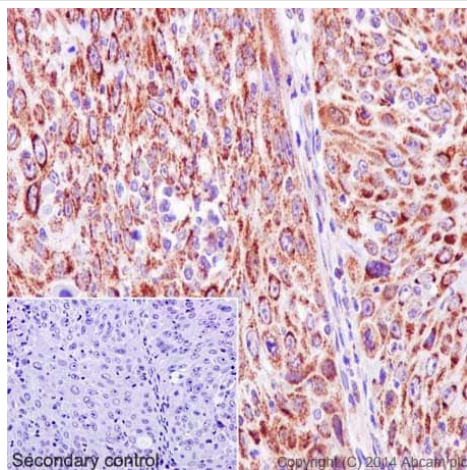
HRP goat anti-rabbit (H+L) at 1/1000 dilution

Predicted band size: 11 kDa

Observed band size: 14 kDa

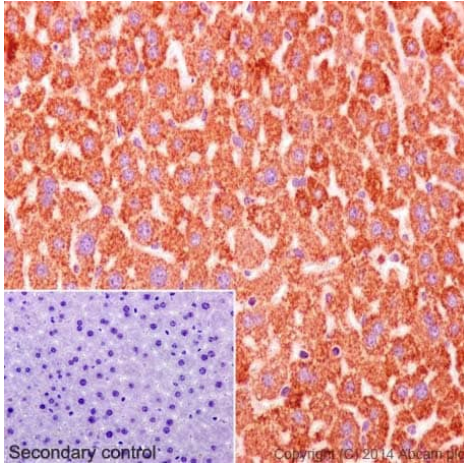
Blocking buffer: 5% NFDM/TBST

Dilution buffer: 5% NFDM/TBST



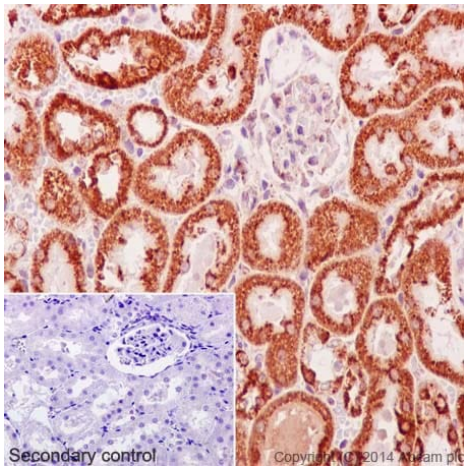
Immunohistochemistry (Formalin/PFA-fixed paraffin-
embedded sections) - Anti-Cytochrome C antibody
[EPR1327] (ab133504)

Immunohistochemical staining of paraffin embedded
human cervical carcinoma with purified ab133504 at a working
dilution of 1 in 500. The secondary antibody used is a HRP goat
anti-rabbit H+L ([ab97051](#)). The sample is counter-stained with
hematoxylin. Antigen retrieval was performed using Tris-EDTA
buffer, pH 9.0. PBS was used instead of the primary antibody as the
negative control, and is shown in the inset.



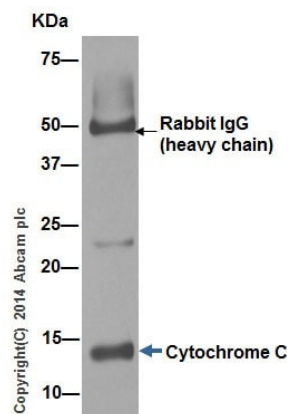
Immunohistochemistry (Formalin/PFA-fixed paraffin-embedded sections) - Anti-Cytochrome C antibody [EPR1327] (ab133504)

Immunohistochemical staining of paraffin embedded mouse liver with purified ab133504 at a working dilution of 1 in 500. The secondary antibody used is a HRP goat anti-rabbit H+L ([ab97051](#)). The sample is counter-stained with hematoxylin. Antigen retrieval was performed using Tris-EDTA buffer, pH 9.0. PBS was used instead of the primary antibody as the negative control, and is shown in the inset.



Immunohistochemistry (Formalin/PFA-fixed paraffin-embedded sections) - Anti-Cytochrome C antibody [EPR1327] (ab133504)

Immunohistochemical staining of paraffin embedded rat kidney with purified ab133504 at a working dilution of 1 in 500. The secondary antibody used is a HRP goat anti-rabbit H+L ([ab97051](#)). The sample is counter-stained with hematoxylin. Antigen retrieval was performed using Tris-EDTA buffer, pH 9.0. PBS was used instead of the primary antibody as the negative control, and is shown in the inset.

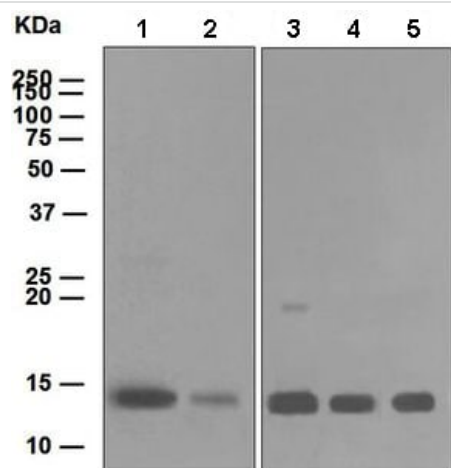


Immunoprecipitation - Anti-Cytochrome C antibody
[EPR1327] (ab133504)

ab133504 (purified) at 1/30 immunoprecipitating Cytochrome C in Molt-4 cells.

For western blotting, a HRP-conjugated goat anti-rabbit (H+L), was used as the secondary antibody (1/1000).

Blocking/Dilution buffer and concentration: 5% NFDM/TBST.



Western blot - Anti-Cytochrome C antibody
[EPR1327] (ab133504)

All lanes : Anti-Cytochrome C antibody [EPR1327] (ab133504) at 1/10000 dilution (unpurified)

Lane 1 : Molt4 lysate

Lane 2 : SH-SY5Y lysate

Lane 3 : Human heart lysate

Lane 4 : Human kidney lysate

Lane 5 : Human spleen lysate

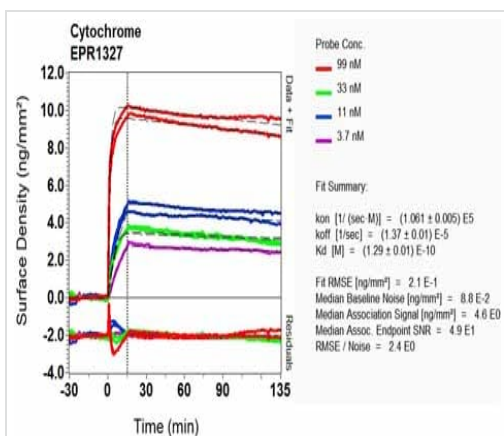
Lysates/proteins at 10 µg per lane.

Secondary

All lanes : Goat-anti-rabbit HRP at 1/2000 dilution

Predicted band size: 11 kDa

Observed band size: 14 kDa

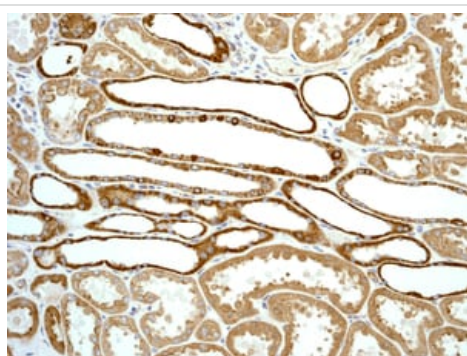


SPR Scanning - Anti-Cytochrome C antibody
 [EPR1327] (ab133504)

Equilibrium dissociation constant (K_D)

Learn more about K_D

[Click here to learn more about \$K_D\$](#)



Immunohistochemistry (Formalin/PFA-fixed paraffin-embedded sections) - Anti-Cytochrome C antibody
 [EPR1327] (ab133504)

Immunohistochemical analysis of paraffin-embedded human kidney tissue labelling Cytochrome C with unpurified ab133504 at 1/250 dilution.

Perform heat mediated antigen retrieval before commencing with IHC staining protocol.

Why choose a recombinant antibody?



Research with confidence
 Consistent and reproducible results



Long-term and scalable supply
 Recombinant technology



Success from the first experiment
 Confirmed specificity



Ethical standards compliant
 Animal-free production

Anti-Cytochrome C antibody [EPR1327] (ab133504)

Please note: All products are "FOR RESEARCH USE ONLY. NOT FOR USE IN DIAGNOSTIC PROCEDURES"

Our Abpromise to you: Quality guaranteed and expert technical support

- Replacement or refund for products not performing as stated on the datasheet
- Valid for 12 months from date of delivery
- Response to your inquiry within 24 hours

- We provide support in Chinese, English, French, German, Japanese and Spanish
- Extensive multi-media technical resources to help you
- We investigate all quality concerns to ensure our products perform to the highest standards

If the product does not perform as described on this datasheet, we will offer a refund or replacement. For full details of the Abpromise, please visit <https://www.abcam.co.jp/abpromise> or contact our technical team.

Terms and conditions

- Guarantee only valid for products bought direct from Abcam or one of our authorized distributors