


# Anti-Cytochrome C antibody ab18738

**11 References**   **画像数 2**

### 製品の概要

製品名	Anti-Cytochrome C antibody
製品の詳細	Rabbit polyclonal to Cytochrome C
由来種	Rabbit
特異性	This antibody detects the 15 kDa cytochrome C.
アプリケーション	<b>適用あり:</b> WB
種交差性	<b>交差種:</b> Rat, Human <b>交差が予測される動物種:</b> Chicken 
免疫原	Synthetic peptide corresponding to Rat Cytochrome C. Corresponding to residues surrounding amino acid 70 of rat Cytochrome C. (Peptide available as <b>ab38265</b> )
ポジティブ・コントロール	WB: Jurkat cell lysate and 3T3 cell lysate. Rat kidney cell lysate.
特記事項	<p>This product is manufactured by BioVision, an Abcam company and was previously called 3025 Cytochrome c Antibody. 3025-100 is the same size as the 100 µg size of ab18738.</p> <p>The Life Science industry has been in the grips of a reproducibility crisis for a number of years. Abcam is leading the way in addressing this with our range of recombinant monoclonal antibodies and knockout edited cell lines for gold-standard validation. Please check that this product meets your needs before purchasing.</p> <p>If you have any questions, special requirements or concerns, please send us an inquiry and/or contact our Support team ahead of purchase. Recommended alternatives for this product can be found below, along with publications, customer reviews and Q&amp;As</p>

### 製品の特性

製品の状態	Liquid
保存方法	Shipped at 4°C. Upon delivery aliquot and store at -20°C or -80°C. Avoid repeated freeze / thaw cycles.
バッファー	Preservative: 0.03% Proclin 300 Constituents: PBS, 30% Glycerol (glycerin, glycerine), 0.5% BSA, 0.015% EDTA
精製度	Protein A purified
ポリ/モノ	ポリクローナル

## アプリケーション

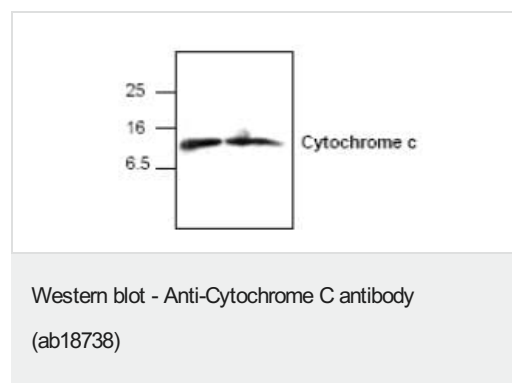
**The Abpromise guarantee** Abpromise保証は、 次のテスト済みアプリケーションにおけるab18738の使用に適用されます  
アプリケーションノートには、推奨の開始希釈率がありますが、適切な希釈率につきましてはご検討ください。

アプリケーション	Abreviews	特記事項
WB		Use a concentration of 1 - 2 µg/ml. Predicted molecular weight: 12 kDa.

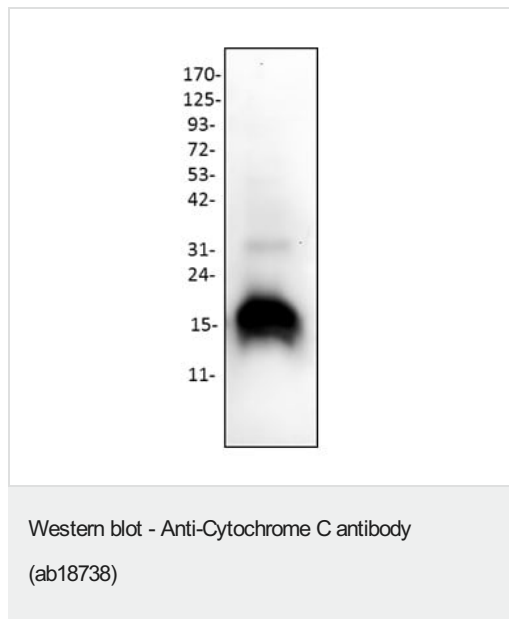
## ターゲット情報

<b>機能</b>	Electron carrier protein. The oxidized form of the cytochrome c heme group can accept an electron from the heme group of the cytochrome c1 subunit of cytochrome reductase. Cytochrome c then transfers this electron to the cytochrome oxidase complex, the final protein carrier in the mitochondrial electron-transport chain. Plays a role in apoptosis. Suppression of the anti-apoptotic members or activation of the pro-apoptotic members of the Bcl-2 family leads to altered mitochondrial membrane permeability resulting in release of cytochrome c into the cytosol. Binding of cytochrome c to Apaf-1 triggers the activation of caspase-9, which then accelerates apoptosis by activating other caspases.
<b>関連疾患</b>	Defects in CYCS are the cause of thrombocytopenia type 4 (THC4) [MIM:612004]; also known as autosomal dominant thrombocytopenia type 4. Thrombocytopenia is the presence of relatively few platelets in blood. THC4 is a non-syndromic form of thrombocytopenia. Clinical manifestations of thrombocytopenia are absent or mild. THC4 may be caused by dysregulated platelet formation.
<b>配列類似性</b>	Belongs to the cytochrome c family.
<b>翻訳後修飾</b>	Binds 1 heme group per subunit.
<b>細胞内局在</b>	Mitochondrion matrix.

## 画像



Western Blot analysis of Left Lane: Jurkat cell lysate and Right Lane: 3T3 cell lysates labeling Cytochrome C with ab18738.



Anti-Cytochrome C antibody (ab18738) + Rat kidney cell lysates

**Predicted band size:** 12 kDa

**Please note:** All products are "FOR RESEARCH USE ONLY. NOT FOR USE IN DIAGNOSTIC PROCEDURES"

#### Our Abpromise to you: Quality guaranteed and expert technical support

---

- Replacement or refund for products not performing as stated on the datasheet
- Valid for 12 months from date of delivery
- Response to your inquiry within 24 hours
- We provide support in Chinese, English, French, German, Japanese and Spanish
- Extensive multi-media technical resources to help you
- We investigate all quality concerns to ensure our products perform to the highest standards

If the product does not perform as described on this datasheet, we will offer a refund or replacement. For full details of the Abpromise, please visit <https://www.abcam.co.jp/abpromise> or contact our technical team.

#### Terms and conditions

---

- Guarantee only valid for products bought direct from Abcam or one of our authorized distributors