

Anti-Cytochrome b5 antibody ab69801

★★★★★ **1 Abreviews** **11 References** 画像数 **3**

製品の概要

製品名	Anti-Cytochrome b5 antibody
製品の詳細	Rabbit polyclonal to Cytochrome b5
由来種	Rabbit
アプリケーション	適用あり: WB, ICC/IF, IHC-P
種交差性	交差種: Mouse, Human
免疫原	Synthetic peptide derived from an internal region of Human Cytochrome b5.
特記事項	<p>The Life Science industry has been in the grips of a reproducibility crisis for a number of years. Abcam is leading the way in addressing this with our range of recombinant monoclonal antibodies and knockout edited cell lines for gold-standard validation. Please check that this product meets your needs before purchasing.</p> <p>If you have any questions, special requirements or concerns, please send us an inquiry and/or contact our Support team ahead of purchase. Recommended alternatives for this product can be found below, along with publications, customer reviews and Q&As</p>

製品の特性

製品の状態	Liquid
保存方法	Shipped at 4°C. Upon delivery aliquot and store at -20°C. Avoid freeze / thaw cycles.
バッファー	<p>pH: 7.40</p> <p>Preservative: 0.02% Sodium azide</p> <p>Constituents: 50% Glycerol (glycerin, glycerine), 0.87% Sodium chloride, PBS</p>
精製度	Without Mg ²⁺ and Ca ²⁺
ポリ/モノ	Immunogen affinity purified
アイソタイプ	ポリクローナル
	IgG

アプリケーション

The Abpromise guarantee

Abpromise保証は、次のテスト済みアプリケーションにおけるab69801の使用に適用されます

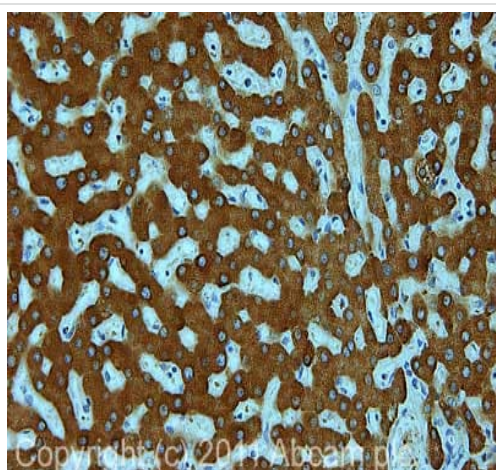
アプリケーションノートには、推奨の開始希釈率がありますが、適切な希釈率につきましてはご確認ください。

アプリケーション	Abreviews	特記事項
WB	★★★★★ (1)	1/500 - 1/1000. Detects a band of approximately 15 kDa (predicted molecular weight: 15 kDa).
ICC/IF		1/500 - 1/1000.
IHC-P		Use a concentration of 1 µg/ml. Perform heat mediated antigen retrieval with citrate buffer pH 6 before commencing with IHC staining protocol.

ターゲット情報

機能	Cytochrome b5 is a membrane bound hemoprotein which function as an electron carrier for several membrane bound oxygenases.
関連疾患	Defects in CYB5A are the cause of methemoglobinemia CYB5A-related (METHB-CYB5A) [MIM:250790]. A form of methemoglobinemia, a hematologic disease characterized by the presence of excessive amounts of methemoglobin in blood cells, resulting in decreased oxygen carrying capacity of the blood, cyanosis and hypoxia.
配列類似性	Belongs to the cytochrome b5 family. Contains 1 cytochrome b5 heme-binding domain.
細胞内局在	Cytoplasm and Endoplasmic reticulum membrane. Microsome membrane.

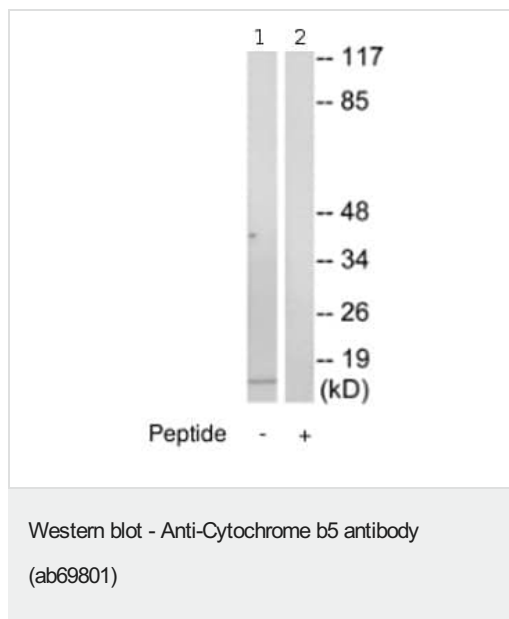
画像



Immunohistochemistry (Formalin/PFA-fixed paraffin-embedded sections) - Anti-Cytochrome b5 antibody (ab69801)

IHC image of ab69801 staining in human normal liver formalin fixed paraffin embedded tissue section, performed on a Leica Bond™ system using the standard protocol F. The section was pre-treated using heat mediated antigen retrieval with sodium citrate buffer (pH6, epitope retrieval solution 1) for 20 mins. The section was then incubated with ab69801, 1 µg/ml, for 15 mins at room temperature and detected using an HRP conjugated compact polymer system. DAB was used as the chromogen. The section was then counterstained with haematoxylin and mounted with DPX.

For other IHC staining systems (automated and non-automated) customers should optimize variable parameters such as antigen retrieval conditions, primary antibody concentration and antibody incubation times.



All lanes : Anti-Cytochrome b5 antibody (ab69801) at 1/500 dilution

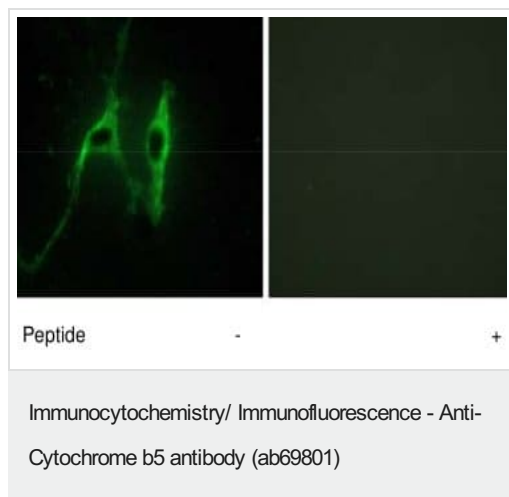
Lane 1 : extracts from A549 cells

Lane 2 : extracts from A549 cells with immunizing peptide at 10 µg

Lysates/proteins at 15 µg per lane.

Predicted band size: 15 kDa

Observed band size: 15 kDa



Left: NIH/3T3 cells stained with ab69801 at 1/500 dilution; Right: the antibody was pre-incubated with the immunizing peptide.

Please note: All products are "FOR RESEARCH USE ONLY. NOT FOR USE IN DIAGNOSTIC PROCEDURES"

Our Abpromise to you: Quality guaranteed and expert technical support

- Replacement or refund for products not performing as stated on the datasheet
- Valid for 12 months from date of delivery
- Response to your inquiry within 24 hours
- We provide support in Chinese, English, French, German, Japanese and Spanish
- Extensive multi-media technical resources to help you
- We investigate all quality concerns to ensure our products perform to the highest standards

If the product does not perform as described on this datasheet, we will offer a refund or replacement. For full details of the Abpromise, please visit <https://www.abcam.co.jp/abpromise> or contact our technical team.

Terms and conditions

- Guarantee only valid for products bought direct from Abcam or one of our authorized distributors