


Anti-Cytochrome b245 Light Chain/p22-phox antibody ab75941

★★★★★ [5 Abreviews](#) [18 References](#) [画像数 3](#)

製品の概要

製品名	Anti-Cytochrome b245 Light Chain/p22-phox antibody
製品の詳細	Rabbit polyclonal to Cytochrome b245 Light Chain/p22-phox
由来種	Rabbit
特異性	Replenishment batches of ab75941 are tested in WB. Previous batches were additionally validated in IHC-P. This application is still expected to work and is covered by our Abpromise guarantee. Please note, previous lots of this product were also guaranteed in ICC/IF. We are having trouble reproducing new lots suitable for ICC/IF. Therefore this application has been removed and it no longer guaranteed.
アプリケーション	適用あり: WB, IHC-P
種交差性	交差種: Mouse, Human 交差が予測される動物種: Rat, Cow, Pig 
免疫原	Synthetic peptide corresponding to Cytochrome b245 Light Chain/p22-phox aa 100 to the C-terminus conjugated to keyhole limpet haemocyanin. (Peptide available as ab86646)
ポジティブ・コントロール	This antibody gave a positive signal in the following lysates: HepG2 Whole Cell, Mouse Pancreas Tissue, Mouse Spleen Tissue. This antibody gave a positive result in IHC in the following FFPE tissue: Human normal lung.
特記事項	<p>The Life Science industry has been in the grips of a reproducibility crisis for a number of years. Abcam is leading the way in addressing this with our range of recombinant monoclonal antibodies and knockout edited cell lines for gold-standard validation. Please check that this product meets your needs before purchasing.</p> <p>If you have any questions, special requirements or concerns, please send us an inquiry and/or contact our Support team ahead of purchase. Recommended alternatives for this product can be found below, along with publications, customer reviews and Q&As</p>

製品の特性

製品の状態	Liquid
保存方法	Shipped at 4°C. Store at +4°C short term (1-2 weeks). Upon delivery aliquot. Store at -20°C or -80°C. Avoid freeze / thaw cycle.
バッファー	pH: 7.40

Preservative: 0.02% Sodium azide
Constituent: PBS

Batches of this product that have a concentration < 1mg/ml may have BSA added as a stabilising agent. If you would like information about the formulation of a specific lot, please contact our scientific support team who will be happy to help.

精製度

Immunogen affinity purified

ポリ/モノ

ポリクローナル

アイソタイプ

IgG

アプリケーション

The Abpromise guarantee **Abpromise保証は、次のテスト済みアプリケーションにおけるab75941の使用に適用されます**

アプリケーションノートには、推奨の開始希釈率がありますが、適切な希釈率につきましてはご検討ください。

アプリケーション	Abreviews	特記事項
WB	★★★★★ (3)	Use a concentration of 1 µg/ml. Detects a band of approximately 19, 21 kDa (predicted molecular weight: 21 kDa).
IHC-P		Use a concentration of 1 µg/ml.

ターゲット情報

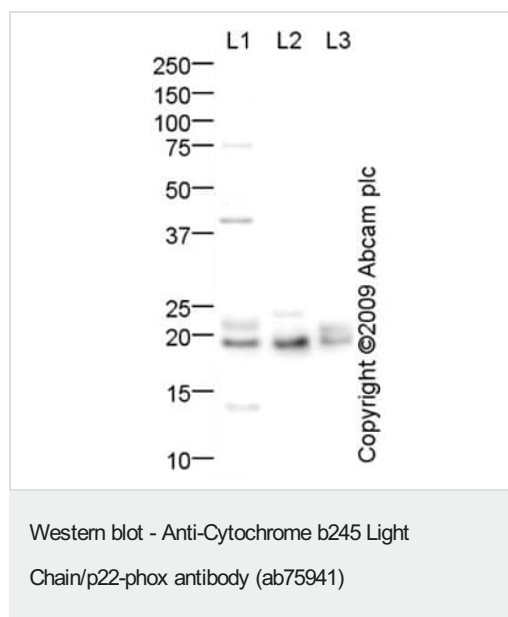
関連性

Cytochrome b245 Light Chain/p22phox is a critical component of the membrane-bound oxidase complex that generates superoxide. It complexes with NOX3 to form a functional NADPH oxidase.

細胞内局在

Cell Membrane

画像



All lanes : Anti-Cytochrome b245 Light Chain/p22-phox antibody (ab75941) at 1 µg/ml

Lane 1 : HepG2 (Human hepatocellular liver carcinoma cell line)
Whole Cell Lysate

Lane 2 : Pancreas (Mouse) Tissue Lysate

Lane 3 : Spleen (Mouse) Tissue Lysate

Lysates/proteins at 10 µg per lane.

Secondary

All lanes : Goat polyclonal to Rabbit IgG - H&L - Pre-Adsorbed (HRP) at 1/3000 dilution

Developed using the ECL technique.

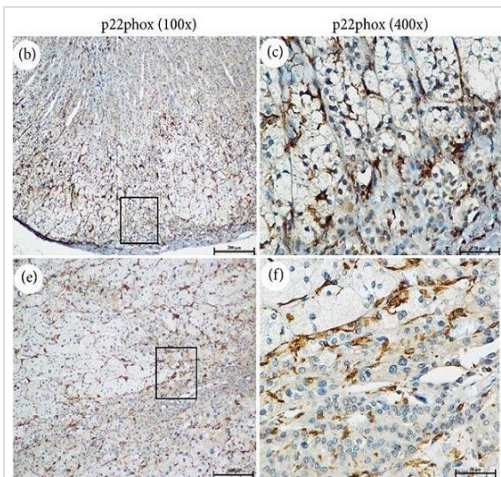
Performed under reducing conditions.

Predicted band size: 21 kDa

Observed band size: 21 kDa

Additional bands at: 19 kDa (possible cleavage fragment), 40 kDa. We are unsure as to the identity of these extra bands.

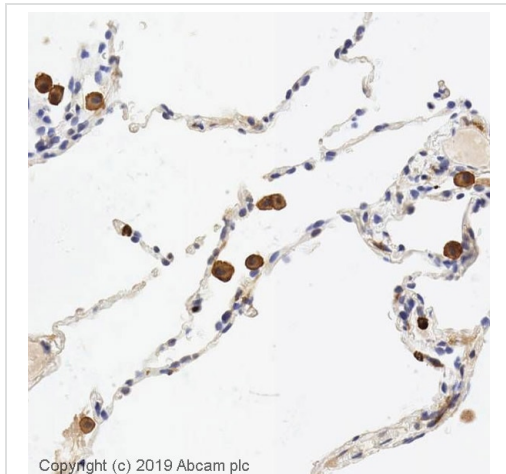
We hypothesize that the 21 kDa band represents the pro-form of Cytochrome b245 Light Chain/p22-phox, and the 19 kDa band represents the mature form.



Immunohistochemical analyses of p22phox using ab75941 (1/200) in normal adrenocortical tissue (b-c) and adrenal aldosterone-producing adenoma, (e-f) p22phox presents a gradient of expression in the entire adrenal cortex (100x), and its localization was restricted to the cell membrane (400x). Sections were incubated with primary antibody at 4°C overnight and with a HRP-conjugated secondary antibody for 30 minutes at 37°C.

Immunohistochemistry (Formalin/PFA-fixed paraffin-embedded sections) - Anti-Cytochrome b245 Light Chain/p22-phox antibody (ab75941)

Geng X et al., Int J Endocrinol 2016, Fig 3., doi: 10.1155/2016/2395634 Reproduced under the Creative Commons license <https://creativecommons.org/licenses/by/4.0/>



Immunohistochemistry (Formalin/PFA-fixed paraffin-embedded sections) - Anti-Cytochrome b245 Light Chain/p22-phox antibody (ab75941)

IHC image of Cytochrome b245 Light Chain/p22-phox staining in a section of formalin-fixed paraffin-embedded normal human lung* performed on a Leica BOND™ system using the standard protocol F. The section was pre-treated using heat mediated antigen retrieval with sodium citrate buffer (pH6, epitope retrieval solution 1) for 20mins. The section was then incubated with ab75941, 1ug/ml, for 15 mins at room temperature and detected using an HRP conjugated compact polymer system. DAB was used as the chromogen. The section was then counterstained with haematoxylin and mounted with DPX.

For other IHC staining systems (automated and non-automated) customers should optimize variable parameters such as antigen retrieval conditions, primary antibody concentration and antibody incubation times.

**Tissue obtained from the Human Research Tissue Bank, supported by the NIHR Cambridge Biomedical Research Centre*

Please note: All products are "FOR RESEARCH USE ONLY. NOT FOR USE IN DIAGNOSTIC PROCEDURES"

Our Abpromise to you: Quality guaranteed and expert technical support

- Replacement or refund for products not performing as stated on the datasheet
- Valid for 12 months from date of delivery
- Response to your inquiry within 24 hours
- We provide support in Chinese, English, French, German, Japanese and Spanish
- Extensive multi-media technical resources to help you
- We investigate all quality concerns to ensure our products perform to the highest standards

If the product does not perform as described on this datasheet, we will offer a refund or replacement. For full details of the Abpromise, please visit <https://www.abcam.co.jp/abpromise> or contact our technical team.

Terms and conditions

- Guarantee only valid for products bought direct from Abcam or one of our authorized distributors