

# Anti-Cystatin SN/CST1 antibody ab124281

画像数 2

### 製品の概要

製品名	Anti-Cystatin SN/CST1 antibody
製品の詳細	Rabbit polyclonal to Cystatin SN/CST1
由来種	Rabbit
アプリケーション	<b>適用あり:</b> IHC-P, ICC/IF, ELISA
種交差性	<b>交差種:</b> Human
免疫原	Synthetic peptide corresponding to Human Cystatin SN/CST1 (internal sequence).
ポジティブ・コントロール	Human prostate tissue. MCF7 cells.
特記事項	<p>The Life Science industry has been in the grips of a reproducibility crisis for a number of years. Abcam is leading the way in addressing this with our range of recombinant monoclonal antibodies and knockout edited cell lines for gold-standard validation. Please check that this product meets your needs before purchasing.</p> <p>If you have any questions, special requirements or concerns, please send us an inquiry and/or contact our Support team ahead of purchase. Recommended alternatives for this product can be found below, along with publications, customer reviews and Q&amp;As</p>

### 製品の特性

製品の状態	Liquid
保存方法	Shipped at 4°C. Upon delivery aliquot and store at -20°C. Avoid repeated freeze / thaw cycles.
バッファー	<p>pH: 7.40</p> <p>Preservative: 0.02% Sodium azide</p> <p>Constituents: 50% Glycerol (glycerin, glycerine), 0.88% Sodium chloride, 49% PBS</p>
精製度	Immunogen affinity purified
ポリ/モノ	ポリクローナル
アイソタイプ	IgG

### アプリケーション

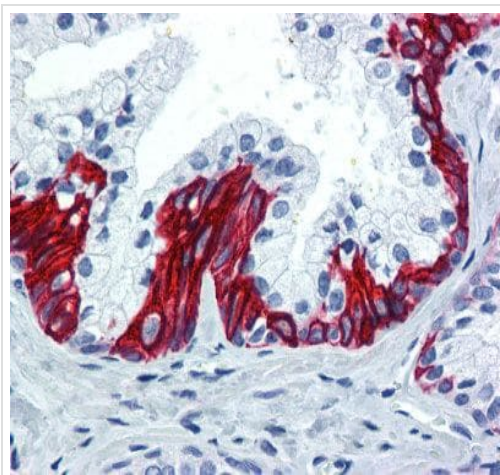
**The Abpromise guarantee**      **Abpromise保証は、** 次のテスト済みアプリケーションにおけるab124281の使用に適用されます  
 アプリケーションノートには、推奨の開始希釈率がありますが、適切な希釈率につきましてはご検討ください。

アプリケーション	Abreviews	特記事項
IHC-P		Use a concentration of 5 µg/ml.
ICC/IF		1/100 - 1/500.
ELISA		Use at an assay dependent concentration.

## ターゲット情報

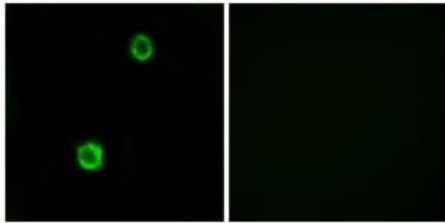
機能	Human saliva appears to contain several cysteine proteinase inhibitors that are immunologically related to cystatin S but that differ in their specificity due to amino acid sequence differences. Cystatin SN, with a pI of 7.5, is a much better inhibitor of papain and dipeptidyl peptidase I than is cystatin S, although both inhibit ficin equally well.
組織特異性	Expressed in submandibular and sublingual saliva but not in parotid saliva (at protein level). Expressed in saliva, tears, urine and seminal fluid.
配列類似性	Belongs to the cystatin family.
細胞内局在	Secreted.

## 画像



ab124281, at 5µg/ml, staining Cystatin SN/CST1 in formalin-fixed, paraffin-embedded Human prostate tissue.

Immunohistochemistry (Formalin/PFA-fixed paraffin-embedded sections) - Anti-Cystatin SN/CST1 antibody (ab124281)



Immunofluorescence analysis of MCF7 cells, using ab124281 at 1/100 dilution. The picture on the right is treated with the synthesized peptide.

Immunocytochemistry/ Immunofluorescence - Anti-Cystatin SN/CST1 antibody (ab124281)

**Please note:** All products are "FOR RESEARCH USE ONLY. NOT FOR USE IN DIAGNOSTIC PROCEDURES"

### Our Abpromise to you: Quality guaranteed and expert technical support

---

- Replacement or refund for products not performing as stated on the datasheet
- Valid for 12 months from date of delivery
- Response to your inquiry within 24 hours
- We provide support in Chinese, English, French, German, Japanese and Spanish
- Extensive multi-media technical resources to help you
- We investigate all quality concerns to ensure our products perform to the highest standards

If the product does not perform as described on this datasheet, we will offer a refund or replacement. For full details of the Abpromise, please visit <https://www.abcam.co.jp/abpromise> or contact our technical team.

### Terms and conditions

---

- Guarantee only valid for products bought direct from Abcam or one of our authorized distributors