

### Anti-Cystatin-B antibody [EPR3931] ab92449


KO 評価済

リコンビナント

RabMAb<sup>®</sup>

画像数 5

#### 製品の概要

製品名	Anti-Cystatin-B antibody [EPR3931]
製品の詳細	Rabbit monoclonal [EPR3931] to Cystatin-B
由来種	Rabbit
アプリケーション	<b>適用あり:</b> WB, IHC-P <b>適用なし:</b> ICC/IF or IP
種交差性	<b>交差種:</b> Human <b>交差が予測される動物種:</b> Rat 
免疫原	Synthetic peptide within Human Cystatin-B aa 50-150. The exact sequence is proprietary.
ポジティブ・コントロール	WB: HEK293T, U87-MG, JAR, and Human bladder cell lysates. IHC-P: Human colon tissue, human kidney tissue.
特記事項	<p>This product is a recombinant monoclonal antibody, which offers several advantages including:</p> <ul style="list-style-type: none"><li>- High batch-to-batch consistency and reproducibility</li><li>- Improved sensitivity and specificity</li><li>- Long-term security of supply</li><li>- Animal-free production</li></ul> <p>For more information <a href="#">see here</a>.</p> <p>Our RabMAb<sup>®</sup> technology is a patented hybridoma-based technology for making rabbit monoclonal antibodies. For details on our patents, please refer to <a href="#">RabMAb<sup>®</sup> patents</a>.</p> <p>Mouse: We have preliminary internal testing data to indicate this antibody may not react with this species. Please contact us for more information.</p>

#### 製品の特性

製品の状態	Liquid
保存方法	Shipped at 4°C. Store at -20°C. Stable for 12 months at -20°C.
バッファー	pH: 7.20 Preservative: 0.05% Sodium azide Constituents: 0.1% BSA, 40% Glycerol (glycerin, glycerine), 9.85% Tris glycine, 50% Tissue culture supernatant

精製度	Tissue culture supernatant
ポリ/モノ	モノクローナル
クローン名	EPR3931
アイソタイプ	IgG

## アプリケーション

**The Abpromise guarantee** Abpromise保証は、次のテスト済みアプリケーションにおけるab92449の使用に適用されず  
 アプリケーションノートには、推奨の開始希釈率がありますが、適切な希釈率につきましてはご検討ください。

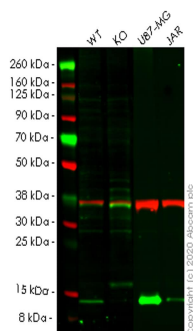
アプリケーション	Abreviews	特記事項
WB		1/1000 - 1/10000. Predicted molecular weight: 11 kDa.
IHC-P		1/100 - 1/250. Perform heat mediated antigen retrieval before commencing with IHC staining protocol.

**追加情報** Is unsuitable for ICC/IF or IP.

## ターゲット情報

<b>機能</b>	This is an intracellular thiol proteinase inhibitor. Tightly binding reversible inhibitor of cathepsins L, H and B.
<b>関連疾患</b>	Defects in CSTB are the cause of progressive myoclonic epilepsy type 1 (EPM1) [MIM:254800]. EPM1 is an autosomal recessive disorder characterized by severe, stimulus-sensitive myoclonus and tonic-clonic seizures. The onset, occurring between 6 and 13 years of age, is characterized by convulsions. Myoclonus begins 1 to 5 years later. The twitchings occur predominantly in the proximal muscles of the extremities and are bilaterally symmetrical, although asynchronous. At first small, they become late in the clinical course so violent that the victim is thrown to the floor. Mental deterioration and eventually dementia develop.
<b>配列類似性</b>	Belongs to the cystatin family.
<b>細胞内局在</b>	Cytoplasm. Nucleus.

## 画像



Western blot - Anti-Cystatin-B antibody [EPR3931] (ab92449)

**All lanes** : Anti-Cystatin-B antibody [EPR3931] (ab92449) at 1/1000 dilution

**Lane 1** : Wild-type HEK293T cell lysate

**Lane 2** : CSTB knockout HEK293T cell lysate

**Lane 3** : U87-MG cell lysate

**Lane 4** : JAR cell lysate

Lysates/proteins at 20 µg per lane.

#### Secondary

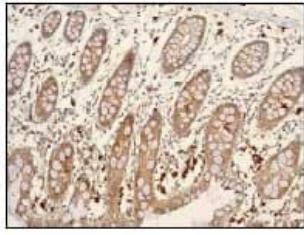
**All lanes** : Goat anti-Rabbit IgG H&L (IRDye® 800CW) preadsorbed ([ab216773](#)) at 1/10000 dilution

**Predicted band size:** 11 kDa

**Observed band size:** 15 kDa

**Lanes 1-4:** Merged signal (red and green). Green - ab92449 observed at 15 kDa. Red - loading control [ab8245](#) observed at 36 kDa.

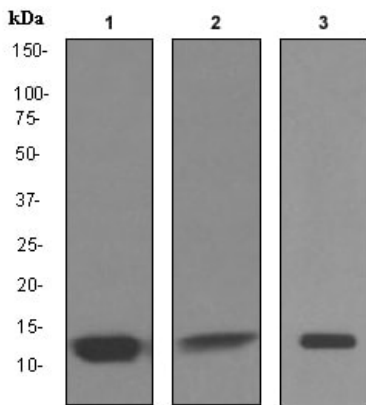
ab92449 Anti-Cystatin-B antibody [EPR3931] was shown to specifically react with Cystatin-B in wild-type HEK293T cells. Loss of signal was observed when knockout cell line [ab266321](#) (knockout cell lysate [ab257905](#)) was used. Wild-type and Cystatin-B knockout samples were subjected to SDS-PAGE. ab92449 and Anti-GAPDH antibody [6C5] - Loading Control ([ab8245](#)) were incubated overnight at 4°C at 1 in 1000 dilution and 1 in 20000 dilution respectively. Blots were developed with Goat anti-Rabbit IgG H&L (IRDye® 800CW) preadsorbed ([ab216773](#)) and Goat anti-Mouse IgG H&L (IRDye® 680RD) preadsorbed ([ab216776](#)) secondary antibodies at 1 in 20000 dilution for 1 hour at room temperature before imaging.



Immunohistochemistry (Formalin/PFA-fixed paraffin-embedded sections) - Anti-Cystatin-B antibody [EPR3931] (ab92449)

ab92449, at 1/100 dilution, staining Cystatin-B in paraffin-embedded Human colon tissue.

Heat mediated antigen retrieval was performed before commencing with IHC staining protocol.



Western blot - Anti-Cystatin-B antibody [EPR3931] (ab92449)

**All lanes :** Anti-Cystatin-B antibody [EPR3931] (ab92449) at 1/1000 dilution

**Lane 1 :** U-87 MG (Human glioblastoma-astrocytoma epithelial cell line) cell lysate

**Lane 2 :** JAR cell lysate

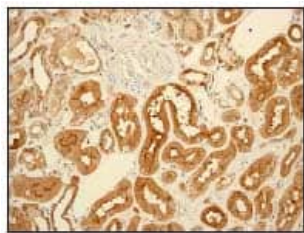
**Lane 3 :** Human bladder tissue lysate

Lysates/proteins at 10 µg per lane.

### Secondary

**All lanes :** HRP labelled goat anti-rabbit at 1/2000 dilution

**Predicted band size:** 11 kDa







Immunohistochemistry (Formalin/PFA-fixed paraffin-embedded sections) - Anti-Cystatin-B antibody [EPR3931] (ab92449)

ab92449, at 1/100 dilution, staining Cystatin-B in paraffin-embedded Human kidney tissue.

Heat mediated antigen retrieval was performed before commencing with IHC staining protocol.

Why choose a recombinant antibody?

 <p><b>Research with confidence</b> Consistent and reproducible results</p>	 <p><b>Long-term and scalable supply</b> Recombinant technology</p>
 <p><b>Success from the first experiment</b> Confirmed specificity</p>	 <p><b>Ethical standards compliant</b> Animal-free production</p>

Anti-Cystatin-B antibody [EPR3931] (ab92449)

**Please note:** All products are "FOR RESEARCH USE ONLY. NOT FOR USE IN DIAGNOSTIC PROCEDURES"

### Our Abpromise to you: Quality guaranteed and expert technical support

---

- Replacement or refund for products not performing as stated on the datasheet
- Valid for 12 months from date of delivery
- Response to your inquiry within 24 hours
- We provide support in Chinese, English, French, German, Japanese and Spanish
- Extensive multi-media technical resources to help you
- We investigate all quality concerns to ensure our products perform to the highest standards

If the product does not perform as described on this datasheet, we will offer a refund or replacement. For full details of the Abpromise, please visit <https://www.abcam.co.jp/abpromise> or contact our technical team.

### Terms and conditions

---

- Guarantee only valid for products bought direct from Abcam or one of our authorized distributors