

Anti-Cystatin-B antibody [2F1] ab72353

★★★★★ [1 Abreviews](#) [1 References](#) [画像数 3](#)

製品の概要

製品名	Anti-Cystatin-B antibody [2F1]
製品の詳細	Mouse monoclonal [2F1] to Cystatin-B
由来種	Mouse
アプリケーション	適用あり: WB, ICC/IF
種交差性	交差種: Human
免疫原	Recombinant full length protein corresponding to Human Cystatin-B.
ポジティブ・コントロール	A549 cell lysate
特記事項	<p>This product was changed from ascites to tissue culture supernatant on 08/05/2019. Please note that the dilutions may need to be adjusted accordingly. If you have any questions, please do not hesitate to contact our scientific support team.</p> <p>The Life Science industry has been in the grips of a reproducibility crisis for a number of years. Abcam is leading the way in addressing this with our range of recombinant monoclonal antibodies and knockout edited cell lines for gold-standard validation. Please check that this product meets your needs before purchasing.</p> <p>If you have any questions, special requirements or concerns, please send us an inquiry and/or contact our Support team ahead of purchase. Recommended alternatives for this product can be found below, along with publications, customer reviews and Q&As</p>

製品の特性

製品の状態	Liquid
保存方法	Shipped at 4°C. Upon delivery aliquot and store at -20°C or -80°C. Avoid repeated freeze / thaw cycles.
バッファー	<p>pH: 7.40</p> <p>Preservative: 0.1% Sodium azide</p> <p>Constituent: PBS</p>
精製度	Tissue culture supernatant
ポリ/モノ	モノクローナル
クローン名	2F1
アイソタイプ	IgG2b

アプリケーション

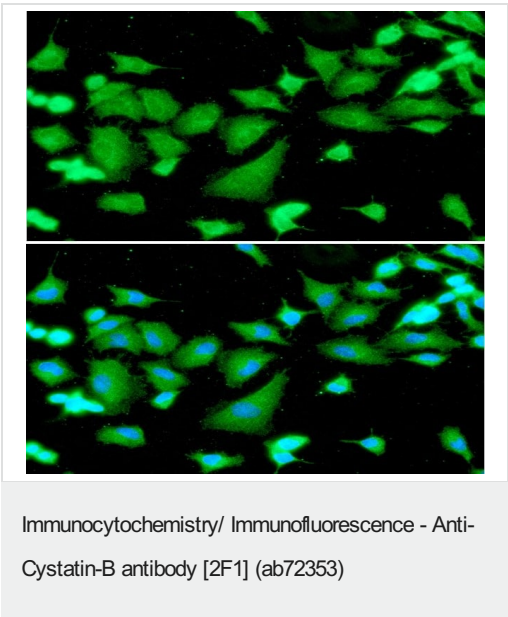
The Abpromise guarantee **Abpromise保証は、**次のテスト済みアプリケーションにおけるab72353の使用に適用されます
アプリケーションノートには、推奨の開始希釈率がありますが、適切な希釈率につきましてはご検討ください。

アプリケーション	Abreviews	特記事項
WB	★ ★ ★ ★ ★ (1)	Use at an assay dependent concentration. Detects a band of approximately 14 kDa (predicted molecular weight: 11 kDa).
ICC/IF		1/100.

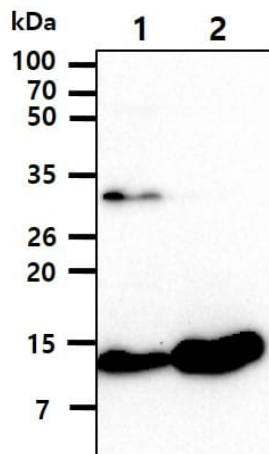
ターゲット情報

機能	This is an intracellular thiol proteinase inhibitor. Tightly binding reversible inhibitor of cathepsins L, H and B.
関連疾患	Defects in CSTB are the cause of progressive myoclonic epilepsy type 1 (EPM1) [MIM:254800]. EPM1 is an autosomal recessive disorder characterized by severe, stimulus-sensitive myoclonus and tonic-clonic seizures. The onset, occurring between 6 and 13 years of age, is characterized by convulsions. Myoclonus begins 1 to 5 years later. The twitchings occur predominantly in the proximal muscles of the extremities and are bilaterally symmetrical, although asynchronous. At first small, they become late in the clinical course so violent that the victim is thrown to the floor. Mental deterioration and eventually dementia develop.
配列類似性	Belongs to the cystatin family.
細胞内局在	Cytoplasm. Nucleus.

画像



ICC/IF analysis of CSTB in A549 cells. The cell was stained with ab72353(1:100). The secondary antibody (green) was used Alexa Fluor 488. DAPI was stained the cell nucleus (blue).



Western blot - Anti-Cystatin-B antibody [2F1]
(ab72353)

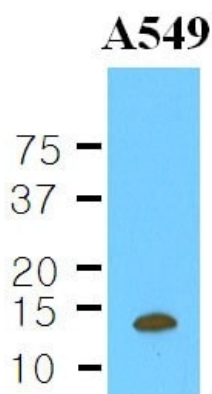
All lanes : Anti-Cystatin-B antibody [2F1] (ab72353) at 1/1000 dilution

Lane 1 : A549 cell lysate

Lane 2 : U87MG cell lysate

Lysates/proteins at 35 µg per lane.

Predicted band size: 11 kDa



Western blot - Anti-Cystatin-B antibody [2F1]
(ab72353)

Anti-Cystatin-B antibody [2F1] (ab72353) at 1/1000 dilution + A549 cells lysate at 35 µg

Secondary

goat anti-mouse secondary antibody conjugated to HRP

Developed using the ECL technique.

Predicted band size: 11 kDa

Observed band size: 14 kDa

This image was generated using the ascites version of the product.

Please note: All products are "FOR RESEARCH USE ONLY. NOT FOR USE IN DIAGNOSTIC PROCEDURES"

Our Abpromise to you: Quality guaranteed and expert technical support

- Replacement or refund for products not performing as stated on the datasheet
- Valid for 12 months from date of delivery
- Response to your inquiry within 24 hours
- We provide support in Chinese, English, French, German, Japanese and Spanish
- Extensive multi-media technical resources to help you
- We investigate all quality concerns to ensure our products perform to the highest standards

If the product does not perform as described on this datasheet, we will offer a refund or replacement. For full details of the Abpromise, please visit <https://www.abcam.co.jp/abpromise> or contact our technical team.

Terms and conditions

- Guarantee only valid for products bought direct from Abcam or one of our authorized distributors