

Anti-Cystathionase/CTH antibody [2E12-1C10] ab54573

## 11 References 画像数 4

製品名	Anti-Cystathionase/CTH antibody [2E12-1C10]
製品の詳細	Mouse monoclonal [2E12-1C10] to Cystathionase/CTH
由来種	Mouse
アプリケーション	<b>適用あり:</b> WB, IHC-P, ICC/IF, Flow Cyt
種交差性	<b>交差種:</b> Human
免疫原	Recombinant full length protein corresponding to Human Cystathionase/CTH aa 1-406.
特記事項	<p>This product was changed from ascites to tissue culture supernatant on 12/3/19. Please note that the dilutions may need to be adjusted accordingly. If you have any questions, please do not hesitate to contact our scientific support team.</p> <p>The Life Science industry has been in the grips of a reproducibility crisis for a number of years. Abcam is leading the way in addressing this with our range of recombinant monoclonal antibodies and knockout edited cell lines for gold-standard validation. Please check that this product meets your needs before purchasing.</p> <p>If you have any questions, special requirements or concerns, please send us an inquiry and/or contact our Support team ahead of purchase. Recommended alternatives for this product can be found below, along with publications, customer reviews and Q&amp;As</p>

製品の状態	Liquid
保存方法	Shipped at 4°C. Upon delivery aliquot and store at -20°C or -80°C. Avoid repeated freeze / thaw cycles.
バッファー	pH: 7.4
精製度	Tissue culture supernatant
ポリ/モノ	モノクローナル
クローン名	2E12-1C10
アイソタイプ	IgG1
軽鎖の種類	kappa

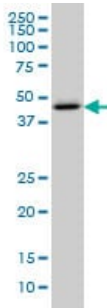
**The Abpromise guarantee**      **Abpromise保証は、** 次のテスト済みアプリケーションにおけるab54573の使用に適用されます  
アプリケーションノートには、推奨の開始希釈率がありますが、適切な希釈率につきましてはご検討ください。

アプリケーション	Abreviews	特記事項
WB		Use at an assay dependent concentration. Predicted molecular weight: 45 kDa.
IHC-P		Use at an assay dependent concentration.
ICC/IF		Use at an assay dependent concentration.
Flow Cyt		Use at an assay dependent concentration. <b>ab170190</b> - Mouse monoclonal IgG1, is suitable for use as an isotype control with this antibody.

## ターゲット情報

機能	Catalyzes the last step in the transsulfuration pathway from methionine to cysteine. Has broad substrate specificity. Converts cystathionine to cysteine, ammonia and 2-oxobutanoate. Converts two cysteine molecules to lanthionine and hydrogen sulfide. Can also accept homocysteine as substrate. Specificity depends on the levels of the endogenous substrates. Generates the endogenous signaling molecule hydrogen sulfide (H <sub>2</sub> S), and so contributes to the regulation of blood pressure.
パスウェイ	Amino-acid biosynthesis; L-cysteine biosynthesis; L-cysteine from L-homocysteine and L-serine: step 2/2.
関連疾患	Defects in CTH are the cause of cystathioninuria (CSTNU) [MIM:219500]. It is an autosomal recessive phenotype characterized by abnormal accumulation of plasma cystathionine, leading to increased urinary excretion.
配列類似性	Belongs to the trans-sulfuration enzymes family.
翻訳後修飾	Phosphorylated upon DNA damage, probably by ATM or ATR.
細胞内局在	Cytoplasm.

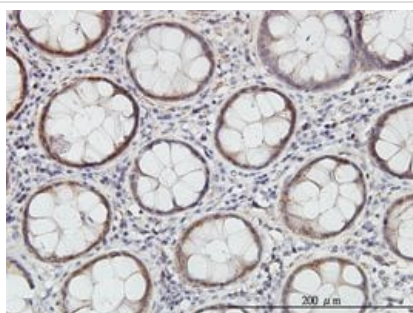
## 画像



Western blot - Anti-Cystathionase/CTH antibody  
[2E12-1C10] (ab54573)

Cystathionase/CTH antibody (ab54573) at 1ug/lane + K-562 cell lysate at 25ug/lane.

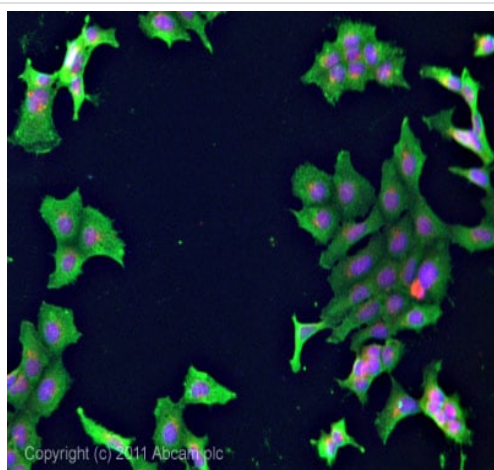
**This image was generated using the ascites version of the product.**



Immunohistochemistry (Formalin/PFA-fixed paraffin-embedded sections) - Anti-Cystathionase/CTH antibody [2E12-1C10] (ab54573)

Cystathionase/CTH antibody (ab54573) used in immunohistochemistry at 3ug/ml on formalin fixed and paraffin embedded human colon.

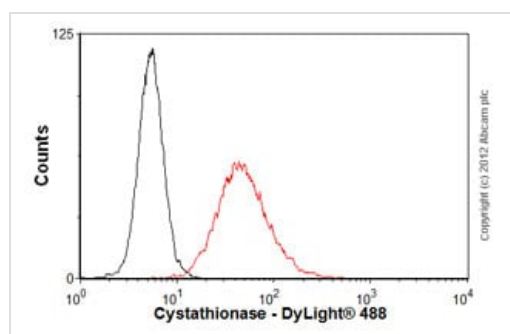
**This image was generated using the ascites version of the product.**



Immunocytochemistry/ Immunofluorescence - Anti-Cystathionase/CTH antibody [2E12-1C10] (ab54573)

ICC/IF image of ab54573 stained MCF7 cells. The cells were 4% formaldehyde fixed (10 min) and then incubated in 1%BSA / 10% normal goat serum / 0.3M glycine in 0.1% PBS-Tween for 1h to permeabilise the cells and block non-specific protein-protein interactions. The cells were then incubated with the antibody (ab54573, 5μg/ml) overnight at +4°C. The secondary antibody (green) was **ab96879**, DyLight® 488 goat anti-mouse IgG (H+L) used at a 1/250 dilution for 1h. Alexa Fluor® 594 WGA was used to label plasma membranes (red) at a 1/200 dilution for 1h. DAPI was used to stain the cell nuclei (blue) at a concentration of 1.43μM.

**This image was generated using the ascites version of the product.**



Flow Cytometry - Anti-Cystathionase/CTH antibody  
[2E12-1C10] (ab54573)

Overlay histogram showing K562 cells stained with ab54573 (red line). The cells were fixed with 4% paraformaldehyde (10 min) and then permeabilized with 0.1% PBS-Tween for 20 min. The cells were then incubated in 1x PBS / 10% normal goat serum / 0.3M glycine to block non-specific protein-protein interactions. The cells were then incubated with the antibody (ab54573, 1µg/1x10<sup>6</sup> cells) for 30 min at 22°C. The secondary antibody used was DyLight® 488 goat anti-mouse IgG (H+L) (**ab96879**) at 1/500 dilution for 30 min at 22°C. Isotype control antibody (black line) was mouse IgG1 [ICIGG1] (**ab91353**, 2µg/1x10<sup>6</sup> cells) used under the same conditions. Acquisition of >5,000 events was performed. This antibody gave a positive signal in K562 cells fixed with 80% methanol (5 min)/permeabilized with 0.1% PBS-Tween for 20 min used under the same conditions.

**This image was generated using the ascites version of the product.**

**Please note:** All products are "FOR RESEARCH USE ONLY. NOT FOR USE IN DIAGNOSTIC PROCEDURES"

### Our Abpromise to you: Quality guaranteed and expert technical support

- Replacement or refund for products not performing as stated on the datasheet
- Valid for 12 months from date of delivery
- Response to your inquiry within 24 hours
- We provide support in Chinese, English, French, German, Japanese and Spanish
- Extensive multi-media technical resources to help you
- We investigate all quality concerns to ensure our products perform to the highest standards

If the product does not perform as described on this datasheet, we will offer a refund or replacement. For full details of the Abpromise, please visit <https://www.abcam.co.jp/abpromise> or contact our technical team.

### Terms and conditions

- Guarantee only valid for products bought direct from Abcam or one of our authorized distributors