

Anti-CYP11B1 antibody [F21 P6 F5] ab55841

画像数 2

製品の概要

製品名	Anti-CYP11B1 antibody [F21 P6 F5]
製品の詳細	Mouse monoclonal [F21 P6 F5] to CYP11B1
由来種	Mouse
アプリケーション	適用あり: WB, IHC-P
種交差性	交差種: Human
免疫原	Synthetic peptide derived from the C terminus of human CYP450 4F11
ポジティブ・コントロール	Liposarcoma tissue, kidney
特記事項	<p>The Life Science industry has been in the grips of a reproducibility crisis for a number of years. Abcam is leading the way in addressing this with our range of recombinant monoclonal antibodies and knockout edited cell lines for gold-standard validation. Please check that this product meets your needs before purchasing.</p> <p>If you have any questions, special requirements or concerns, please send us an inquiry and/or contact our Support team ahead of purchase. Recommended alternatives for this product can be found below, along with publications, customer reviews and Q&As</p>

製品の特性

製品の状態	Liquid
保存方法	Shipped at 4°C. Upon delivery aliquot and store at -20°C. Avoid freeze / thaw cycles.
バッファー	Preservative: 0.08% Sodium azide Constituent: PBS
精製度	Protein G purified
ポリ/モノ	モノクローナル
クローン名	F21 P6 F5
ミエローマ	Ag8.653
アイソタイプ	IgG1

アプリケーション

The Abpromise guarantee

Abpromise保証は、次のテスト済みアプリケーションにおけるab55841の使用に適用されます

アプリケーションノートには、推奨の開始希釈率がありますが、適切な希釈率につきましてはご検討ください。

アプリケーション	Abreviews	特記事項
WB		Use a concentration of 1 - 2 µg/ml. Detects a band of approximately 60 kDa (predicted molecular weight: 60 kDa).
IHC-P		Use a concentration of 1 - 5 µg/ml.

ターゲット情報

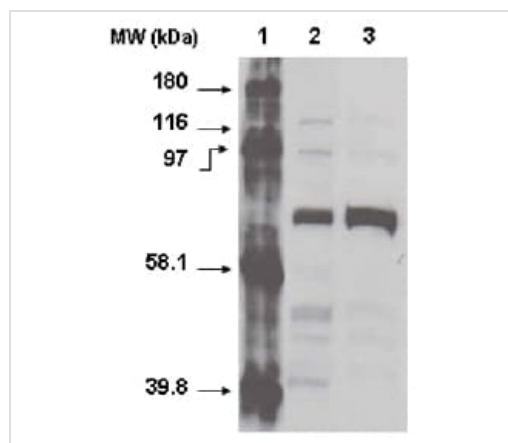
関連性

CYP11B1 is a member of the cytochrome P450 family of cytochrome monooxidases that catalyze many reactions involved in drug metabolism and synthesis of cholesterol, steroids and other lipids. CYP4F11 has catalytic properties towards endogenous eicosanoids as well as some clinically relevant drugs, and is able to metabolize large molecules such as erythromycin.

細胞内局在

Endoplasmic reticulum membrane; Single pass membrane protein

画像



Western blot - Anti-CYP11B1 antibody [F21 P6 F5] (ab55841)

All lanes : Anti-CYP11B1 antibody [F21 P6 F5] (ab55841) at 1 µg/ml

Lane 1 : molecular weight markers

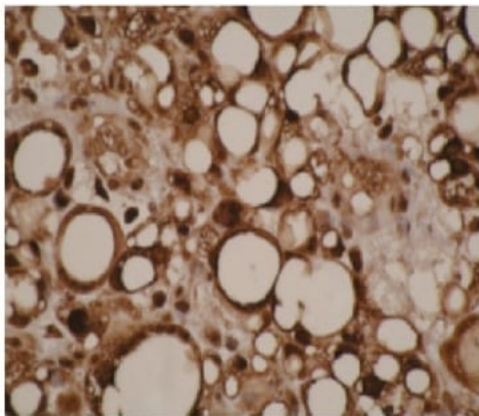
Lane 2 : normal kidney cell lysate

Lane 3 : kidney cancer cell lysate

Lysates/proteins at 20 µg per lane.

Predicted band size: 60 kDa

Observed band size: 60 kDa



ab55841 at 1 µg/ml staining human liposarcoma cells; formalin fixed, paraffin embedded.

Immunohistochemistry (Formalin/PFA-fixed paraffin-embedded sections) - Anti-CYPIVF11 antibody [F21 P6 F5] (ab55841)

Please note: All products are "FOR RESEARCH USE ONLY. NOT FOR USE IN DIAGNOSTIC PROCEDURES"

Our Abpromise to you: Quality guaranteed and expert technical support

- Replacement or refund for products not performing as stated on the datasheet
- Valid for 12 months from date of delivery
- Response to your inquiry within 24 hours
- We provide support in Chinese, English, French, German, Japanese and Spanish
- Extensive multi-media technical resources to help you
- We investigate all quality concerns to ensure our products perform to the highest standards

If the product does not perform as described on this datasheet, we will offer a refund or replacement. For full details of the Abpromise, please visit <https://www.abcam.co.jp/abpromise> or contact our technical team.

Terms and conditions

- Guarantee only valid for products bought direct from Abcam or one of our authorized distributors