


### Anti-CYP7A1 antibody ab65596

★★★★★ [4 Abreviews](#) [47 References](#) [画像数 1](#)

#### 製品の概要

製品名	Anti-CYP7A1 antibody
製品の詳細	Rabbit polyclonal to CYP7A1
由来種	Rabbit
アプリケーション	<b>適用あり:</b> WB, ELISA
種交差性	<b>交差種:</b> Mouse <b>交差が予測される動物種:</b> Rat, Dog, Human, Pig, Rhesus monkey 
免疫原	Synthetic peptide conjugated to KLH derived from within residues 100 - 200 of Human CYP7A1. Immunogen の所有権に関して (Peptide available as <a href="#">ab69726</a> .)
ポジティブ・コントロール	WB: High Fat Diet and regular Mouse Liver lysate
特記事項	<p>The Life Science industry has been in the grips of a reproducibility crisis for a number of years. Abcam is leading the way in addressing this with our range of recombinant monoclonal antibodies and knockout edited cell lines for gold-standard validation. Please check that this product meets your needs before purchasing.</p> <p>If you have any questions, special requirements or concerns, please send us an inquiry and/or contact our Support team ahead of purchase. Recommended alternatives for this product can be found below, along with publications, customer reviews and Q&amp;As</p>

#### 製品の特性

製品の状態	Liquid
保存方法	Shipped at 4°C. Store at +4°C short term (1-2 weeks). Upon delivery aliquot. Store at -20°C or -80°C. Avoid freeze / thaw cycle.
バッファー	pH: 7.40 Preservative: 0.02% Sodium azide Constituent: PBS  Batches of this product that have a concentration < 1mg/ml may have BSA added as a stabilising agent. If you would like information about the formulation of a specific lot, please contact our scientific support team who will be happy to help.
精製度	Immunogen affinity purified
ポリ/モノ	ポリクローナル

## アプリケーション

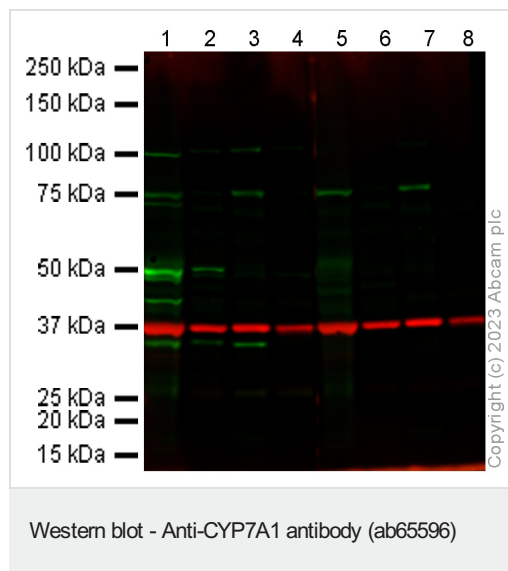
**The Abpromise guarantee** **Abpromise保証は、次のテスト済みアプリケーションにおけるab65596の使用に適用されます**  
アプリケーションノートには、推奨の開始希釈率がありますが、適切な希釈率につきましてはご検討ください。

アプリケーション	Abreviews	特記事項
WB	★★★★★ (4)	Use a concentration of 1 µg/ml. Predicted molecular weight: 57 kDa.
ELISA		Use at an assay dependent concentration.

## ターゲット情報

機能	Catalyzes a rate-limiting step in cholesterol catabolism and bile acid biosynthesis by introducing a hydrophilic moiety at position 7 of cholesterol. Important for cholesterol homeostasis.
組織特異性	Detected in liver.
パスウェイ	Lipid metabolism; bile acid biosynthesis.
配列類似性	Belongs to the cytochrome P450 family.
細胞内局在	Endoplasmic reticulum membrane. Microsome membrane.

## 画像



**All lanes** : Anti-CYP7A1 antibody (ab65596) at 1 µg/ml

**Lanes 1 & 5** : High Fat Diet Mouse Liver lysate

**Lanes 2 & 6** : Mouse Liver lysate

**Lanes 3 & 7** : Mouse Thymus lysate

**Lanes 4 & 8** : Mouse Colon lysate

Lysates/proteins at 20 µg per lane.

**Predicted band size:** 57 kDa

**Observed band size:** 50 kDa

Primary antibody (Green) - ab65596 without (Lanes 1-4) and with (Lanes 5-8) immunising peptide.

Loading Control (Red) - **ab8245** at 0.1 µg/ml, all lanes.

Secondary antibody - Goat anti-Rabbit IgG H&L (IRDye® 800CW)  
preabsorbed at 1/10000 dilution and Goat anti-Mouse IgG H&L  
(IRDye® 680RD) preabsorbed at 1/10000 Dilution.

Blocking Buffer - 3% Milk

**Please note:** All products are "FOR RESEARCH USE ONLY. NOT FOR USE IN DIAGNOSTIC PROCEDURES"

### **Our Abpromise to you: Quality guaranteed and expert technical support**

---

- Replacement or refund for products not performing as stated on the datasheet
- Valid for 12 months from date of delivery
- Response to your inquiry within 24 hours
  
- We provide support in Chinese, English, French, German, Japanese and Spanish
- Extensive multi-media technical resources to help you
- We investigate all quality concerns to ensure our products perform to the highest standards

If the product does not perform as described on this datasheet, we will offer a refund or replacement. For full details of the Abpromise, please visit <https://www.abcam.co.jp/abpromise> or contact our technical team.

### **Terms and conditions**

---

- Guarantee only valid for products bought direct from Abcam or one of our authorized distributors