

Anti-CYP4V2 antibody ab69392

1 References [画像数 3](#)

製品の概要

製品名	Anti-CYP4V2 antibody
製品の詳細	Mouse polyclonal to CYP4V2
由来種	Mouse
アプリケーション	適用あり: WB
種交差性	交差種: Human
免疫原	Recombinant full length protein within Human CYP4V2. The exact immunogen sequence used to generate this antibody is proprietary information. If additional detail on the immunogen is needed to determine the suitability of the antibody for your needs, please <u>contact</u> our Scientific Support team to discuss your requirements.
ポジティブ・コントロール	CYP4V2 transfected 293T cell lysate; human liver lysate.
特記事項	<p>The Life Science industry has been in the grips of a reproducibility crisis for a number of years. Abcam is leading the way in addressing this with our range of recombinant monoclonal antibodies and knockout edited cell lines for gold-standard validation. Please check that this product meets your needs before purchasing.</p> <p>If you have any questions, special requirements or concerns, please send us an inquiry and/or contact our Support team ahead of purchase. Recommended alternatives for this product can be found below, along with publications, customer reviews and Q&As</p>

製品の特性

製品の状態	Liquid
保存方法	Shipped at 4°C. Upon delivery aliquot and store at -20°C or -80°C. Avoid repeated freeze / thaw cycles.
バッファー	pH: 7.40 Constituent: 100% PBS
精製度	Protein G purified
ポリ/モノ	ポリクローナル
アイソタイプ	IgG

アプリケーション

The Abpromise guarantee

Abpromise保証は、次のテスト済みアプリケーションにおけるab69392の使用に適用されます

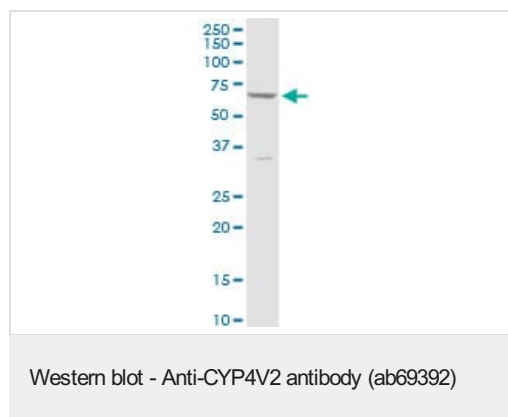
アプリケーションノートには、推奨の開始希釈率がありますが、適切な希釈率につきましてはご検討ください。

アプリケーション	Abreviews	特記事項
WB		1/500 - 1/1000. Detects a band of approximately 61 kDa (predicted molecular weight: 61 kDa).

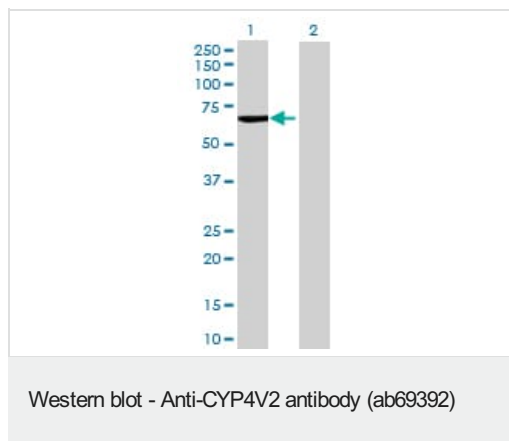
ターゲット情報

機能	Catalyzes the omega-hydroxylation of medium-chain saturated fatty acids such as laurate, myristate and palmitate in an NADPH-dependent pathway. The substrate specificity is higher for myristate > laurate > palmitate (C14>C16>C12). May have a role in fatty acid and steroid metabolism in the eye.
組織特異性	Broadly expressed. Detected in heart, brain, placenta, lung, liver, skeletal muscle, kidney, pancreas, retina, retinal pigment epithelium (RPE) and lymphocytes.
関連疾患	Bietti crystalline corneoretinal dystrophy (BCD) [MIM:210370]: An autosomal recessive ocular disease characterized by retinal degeneration and marginal corneal dystrophy. Typical features include multiple glistening intraretinal crystals scattered over the fundus, a characteristic degeneration of the retina, and sclerosis of the choroidal vessels, ultimately resulting in progressive night blindness and constriction of the visual field. Most patients have similar crystals at the corneoscleral limbus. Patients develop decreased vision, nyctalopia, and paracentral scotomata between the 2nd and 4th decade of life. Later, they develop peripheral visual field loss and marked visual impairment, usually progressing to legal blindness by the 5th or 6th decade of life. Note=The disease is caused by mutations affecting the gene represented in this entry.
配列類似性	Belongs to the cytochrome P450 family.
細胞内局在	Endoplasmic reticulum membrane.

画像



Western blot analysis of CYP4V2 in HeLa cell line using ab69392.



All lanes : Anti-CYP4V2 antibody (ab69392) at 1/500 dilution

Lane 1 : CYP4V2 transfected 293T cell lysate

Lane 2 : Non transfected 293T cell lysate

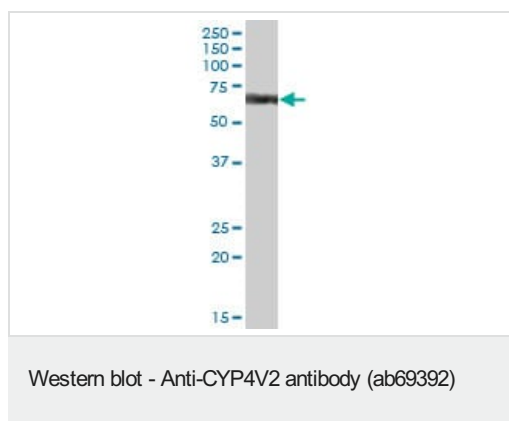
Lysates/proteins at 25 µg per lane.

Secondary

All lanes : Goat Anti-Mouse IgG (H&L)-HRP Conjugate at 1/2500 dilution

Predicted band size: 61 kDa

Observed band size: 61 kDa



Anti-CYP4V2 antibody (ab69392) at 1/500 dilution + human liver lysate at 50 µg

Secondary

Goat Anti-Mouse IgG (H&L)-HRP Conjugate at 1/2500 dilution

Predicted band size: 61 kDa

Observed band size: 61 kDa

Please note: All products are "FOR RESEARCH USE ONLY. NOT FOR USE IN DIAGNOSTIC PROCEDURES"

Our Abpromise to you: Quality guaranteed and expert technical support

- Replacement or refund for products not performing as stated on the datasheet
- Valid for 12 months from date of delivery
- Response to your inquiry within 24 hours
- We provide support in Chinese, English, French, German, Japanese and Spanish
- Extensive multi-media technical resources to help you
- We investigate all quality concerns to ensure our products perform to the highest standards

If the product does not perform as described on this datasheet, we will offer a refund or replacement. For full details of the Abpromise, please visit <https://www.abcam.co.jp/abpromise> or contact our technical team.

Terms and conditions

- Guarantee only valid for products bought direct from Abcam or one of our authorized distributors