


Anti-CYP3A43 antibody ab155029

5 References [画像数 3](#)

医薬用外劇物

製品の概要

製品名	Anti-CYP3A43 antibody
製品の詳細	Rabbit polyclonal to CYP3A43
由来種	Rabbit
アプリケーション	適用あり: WB, IHC-P, ICC/IF
種交差性	交差種: Human 交差が予測される動物種: Monkey 
免疫原	Recombinant fragment corresponding to a region within amino acids 33-248 of Human CYP3A43 (UniProt ID: Q9HB55).
ポジティブ・コントロール	HCT116, HepG2, HeLa and A549 whole cell lysate. HeLa cells. Human breast carcinoma tissue.
特記事項	<p>The Life Science industry has been in the grips of a reproducibility crisis for a number of years. Abcam is leading the way in addressing this with our range of recombinant monoclonal antibodies and knockout edited cell lines for gold-standard validation. Please check that this product meets your needs before purchasing.</p> <p>If you have any questions, special requirements or concerns, please send us an inquiry and/or contact our Support team ahead of purchase. Recommended alternatives for this product can be found below, along with publications, customer reviews and Q&As</p>

製品の特性

製品の状態	Liquid
保存方法	Shipped at 4°C. Upon delivery aliquot. Store at -20°C or -80°C. Avoid freeze / thaw cycle.
バッファー	pH: 7.00 Preservative: 0.01% Thimerosal (merthiolate) Constituents: 1.21% Tris, 0.75% Glycine, 20% Glycerol (glycerin, glycerine)
精製度	Immunogen affinity purified
ポリ/モノ	ポリクローナル
アイソタイプ	IgG

アプリケーション

The Abpromise guarantee **Abpromise保証は、次のテスト済みアプリケーションにおけるab155029の使用に適用されます**
アプリケーションノートには、推奨の開始希釈率がありますが、適切な希釈率につきましてはご検討ください。

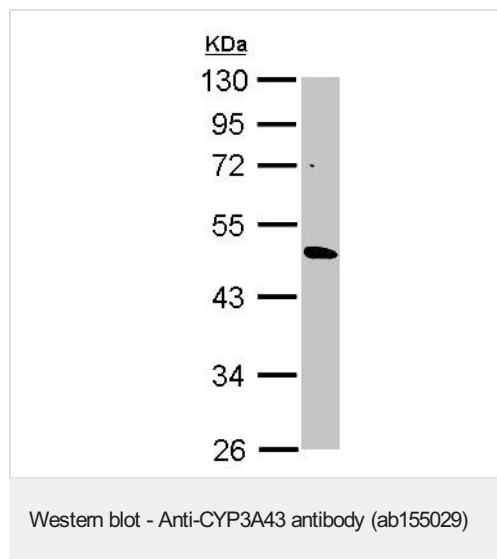
アプリケーション	Abreviews	特記事項
WB		1/500 - 1/3000. Predicted molecular weight: 58 kDa.
IHC-P		1/100 - 1/1000. Perform heat mediated antigen retrieval with citrate buffer pH 6 before commencing with IHC staining protocol.
ICC/IF		1/100 - 1/1000.

ターゲット情報

関連性 CYP3A43 is a member of the cytochrome P450 superfamily of enzymes which are monooxygenases which catalyze many reactions involved in drug metabolism and synthesis of cholesterol, steroids and other lipids. CYP3A43 exhibits low testosterone 6 beta hydroxylase activity.

細胞内局在 Endoplasmic reticulum membrane; Peripheral membrane protein. Microsome membrane; Peripheral membrane protein.

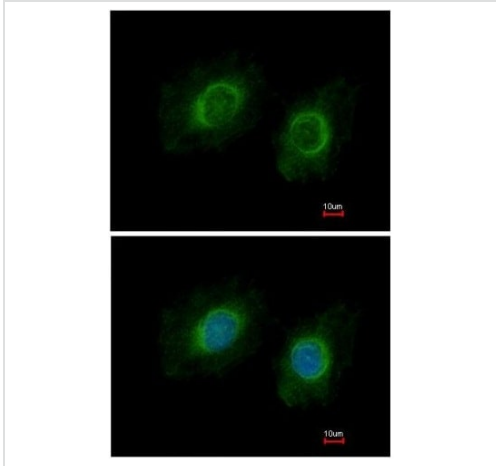
画像



Anti-CYP3A43 antibody (ab155029) at 1/2000 dilution + HepG2 whole cell lysate at 30 µg

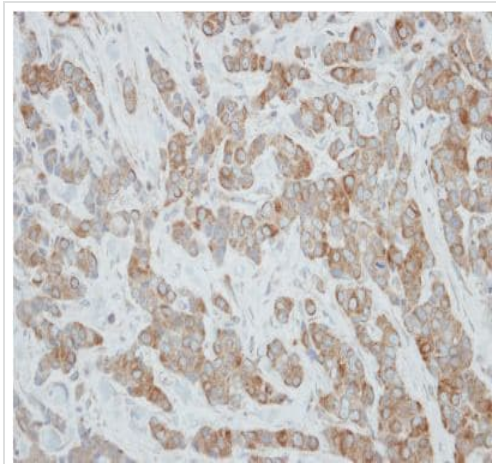
Predicted band size: 58 kDa

10% SDS PAGE



Immunofluorescence analysis of methanol fixed HeLa cells, labeling CYP3A43 using ab155029 at 1/200 dilution. Lower image costained with Hoechst 33342.

Immunocytochemistry/ Immunofluorescence - Anti-CYP3A43 antibody (ab155029)



Immunohistochemical analysis of paraffin embedded Human breast carcinoma tissue, labeling CYP3A43 using ab155029 at 1/250 dilution.

Immunohistochemistry (Formalin/PFA-fixed paraffin-embedded sections) - Anti-CYP3A43 antibody (ab155029)

Please note: All products are "FOR RESEARCH USE ONLY. NOT FOR USE IN DIAGNOSTIC PROCEDURES"

Our Abpromise to you: Quality guaranteed and expert technical support

- Replacement or refund for products not performing as stated on the datasheet
- Valid for 12 months from date of delivery

- Response to your inquiry within 24 hours
- We provide support in Chinese, English, French, German, Japanese and Spanish
- Extensive multi-media technical resources to help you
- We investigate all quality concerns to ensure our products perform to the highest standards

If the product does not perform as described on this datasheet, we will offer a refund or replacement. For full details of the Abpromise, please visit <https://www.abcam.co.jp/abpromise> or contact our technical team.

Terms and conditions

- Guarantee only valid for products bought direct from Abcam or one of our authorized distributors