


### Anti-CYP2U1 antibody ab65128

[3 References](#) [画像数 2](#)

#### 製品の概要

製品名	Anti-CYP2U1 antibody
製品の詳細	Rabbit polyclonal to CYP2U1
由来種	Rabbit
アプリケーション	<b>適用あり:</b> WB, ICC/IF
種交差性	<b>交差種:</b> Human <b>交差が予測される動物種:</b> Mouse, Rat 
免疫原	Synthetic peptide (Human) from an internal sequence
ポジティブ・コントロール	HeLa and LOVO cell extracts
特記事項	<p>The Life Science industry has been in the grips of a reproducibility crisis for a number of years. Abcam is leading the way in addressing this with our range of recombinant monoclonal antibodies and knockout edited cell lines for gold-standard validation. Please check that this product meets your needs before purchasing.</p> <p>If you have any questions, special requirements or concerns, please send us an inquiry and/or contact our Support team ahead of purchase. Recommended alternatives for this product can be found below, along with publications, customer reviews and Q&amp;As</p>

#### 製品の特性

製品の状態	Liquid
保存方法	Shipped at 4°C. Store at -20°C. Stable for 12 months at -20°C.
バッファー	pH: 7.40 Preservative: 0.02% Sodium azide Constituents: PBS, 50% Glycerol (glycerin, glycerine), 0.87% Sodium chloride
精製度	Without Mg <sup>2+</sup> and Ca <sup>2+</sup>
ポリ/モノ	Immunogen affinity purified
アイソタイプ	ポリクローナル
	IgG

アプリケーション

**The Abpromise guarantee**      **Abpromise保証は、次のテスト済みアプリケーションにおけるab65128の使用に適用されます**

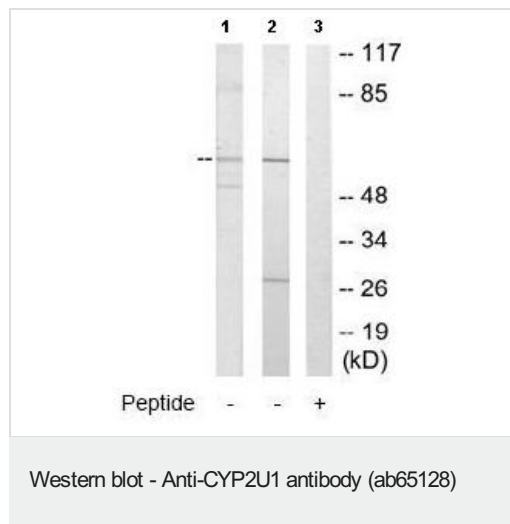
アプリケーションノートには、推奨の開始希釈率がありますが、適切な希釈率につきましてはご検討ください。

アプリケーション	Abreviews	特記事項
WB		1/500 - 1/1000. Detects a band of approximately 62 kDa (predicted molecular weight: 62 kDa).
ICC/IF		Use a concentration of 1 - 5 µg/ml.

## ターゲット情報

機能	Catalyzes the hydroxylation of arachidonic acid, docosahexaenoic acid and other long chain fatty acids. May modulate the arachidonic acid signaling pathway and play a role in other fatty acid signaling processes.
組織特異性	Widely expressed with stronger expression in thymus, heart and cerebellum.
配列類似性	Belongs to the cytochrome P450 family.
発生段階	Expressed in fetal thymus.
細胞内局在	Endoplasmic reticulum membrane. Microsome membrane.

## 画像



**All lanes :** Anti-CYP2U1 antibody (ab65128) at 1/500 dilution

**Lane 1 :** HeLa cell extract

**Lane 2 :** LOVO cell extract

**Lane 3 :** LOVO cell extract with immunising peptide at 5 µg

Lysates/proteins at 5 µg per lane.

**Predicted band size:** 62 kDa

**Observed band size:** 62 kDa

**Additional bands at:** 28 kDa, 55 kDa. We are unsure as to the identity of these extra bands.

Immunocytochemistry/ Immunofluorescence - Anti-CYP2U1 antibody (ab65128)

ICC/IF image of ab65128 stained HeLa cells. The cells were 4% PFA fixed (10 min) and then incubated in 1%BSA / 10% normal goat serum / 0.3M glycine in 0.1% PBS-Tween for 1h to permeabilise the cells and block non-specific protein-protein interactions. The cells were then incubated with the antibody (ab65128, 1µg/ml) overnight at +4°C. The secondary antibody (green) was Alexa Fluor® 488 goat anti-rabbit IgG (H+L) used at a

1/1000 dilution for 1h. Alexa Fluor® 594 WGA was used to label plasma membranes (red) at a 1/200 dilution for 1h. DAPI was used to stain the cell nuclei (blue) at a concentration of 1.43µM.

**Please note:** All products are "FOR RESEARCH USE ONLY. NOT FOR USE IN DIAGNOSTIC PROCEDURES"

### **Our Abpromise to you: Quality guaranteed and expert technical support**

---

- Replacement or refund for products not performing as stated on the datasheet
- Valid for 12 months from date of delivery
- Response to your inquiry within 24 hours
  
- We provide support in Chinese, English, French, German, Japanese and Spanish
- Extensive multi-media technical resources to help you
- We investigate all quality concerns to ensure our products perform to the highest standards

If the product does not perform as described on this datasheet, we will offer a refund or replacement. For full details of the Abpromise, please visit <https://www.abcam.co.jp/abpromise> or contact our technical team.

### **Terms and conditions**

---

- Guarantee only valid for products bought direct from Abcam or one of our authorized distributors