


Anti-CYP2S1 antibody ab69650

[3 References](#) [画像数 3](#)

製品の概要

製品名	Anti-CYP2S1 antibody
製品の詳細	Rabbit polyclonal to CYP2S1
由来種	Rabbit
アプリケーション	適用あり: WB, IHC-P, ICC/IF
種交差性	交差種: Human 交差が予測される動物種: Mouse 
免疫原	Synthetic peptide derived from an internal sequence of human CYP2S1
ポジティブ・コントロール	Extracts from HUVEC and COLO cells, A549 cells and human lung carcinoma tissue.
特記事項	<p>The Life Science industry has been in the grips of a reproducibility crisis for a number of years. Abcam is leading the way in addressing this with our range of recombinant monoclonal antibodies and knockout edited cell lines for gold-standard validation. Please check that this product meets your needs before purchasing.</p> <p>If you have any questions, special requirements or concerns, please send us an inquiry and/or contact our Support team ahead of purchase. Recommended alternatives for this product can be found below, along with publications, customer reviews and Q&As</p>

製品の特性

製品の状態	Liquid
保存方法	Shipped at 4°C. Store at -20°C. Stable for 12 months at -20°C.
バッファー	pH: 7.40 Preservative: 0.02% Sodium azide Constituents: 50% Glycerol (glycerin, glycerine), 0.87% Sodium chloride, PBS
精製度	Without Mg ²⁺ and Ca ²⁺ Immunogen affinity purified
特記事項 (精製)	ab69650 was affinity-purified from rabbit antiserum by affinity-chromatography using epitope-specific immunogen.
ポリ/モノ	ポリクローナル
アイソタイプ	IgG

アプリケーション

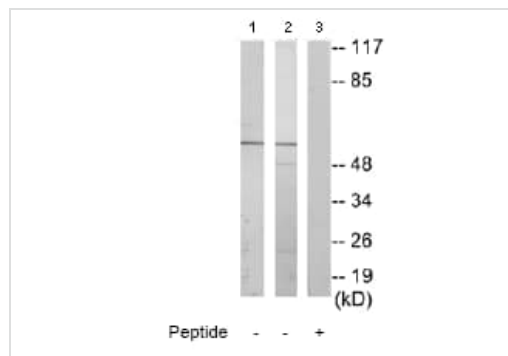
The Abpromise guarantee **Abpromise保証は、次のテスト済みアプリケーションにおけるab69650の使用に適用されず**
アプリケーションノートには、推奨の開始希釈率がありますが、適切な希釈率につきましてはご検討ください。

アプリケーション	Abreviews	特記事項
WB		1/500 - 1/1000. Detects a band of approximately 56 kDa (predicted molecular weight: 56 kDa).
IHC-P		1/50 - 1/100.
ICC/IF		1/500 - 1/1000.

ターゲット情報

機能	Has a potential importance for extrahepatic xenobiotic metabolism.
組織特異性	High level of expression in trachea, lung, stomach, small intestine, and spleen.
配列類似性	Belongs to the cytochrome P450 family.
細胞内局在	Endoplasmic reticulum membrane. Microsome membrane.

画像



Western blot - Anti-CYP2S1 antibody (ab69650)

All lanes : Anti-CYP2S1 antibody (ab69650) at 1/500 dilution

Lane 1 : HUVEC cell extract

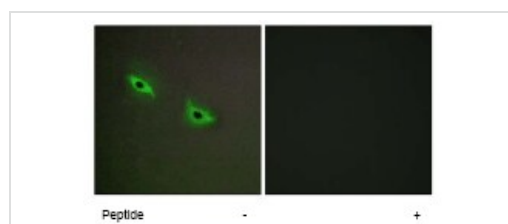
Lane 2 : COLO cell extract

Lane 3 : COLO cell extract with immunising peptide at 10 µg

Lysates/proteins at 30 µg per lane.

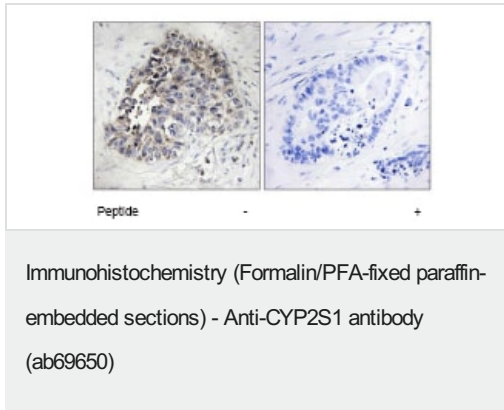
Predicted band size: 56 kDa

Observed band size: 56 kDa



Immunocytochemistry/ Immunofluorescence - Anti-CYP2S1 antibody (ab69650)

ab69650 at 1/500 dilution staining CYP2S1 in A549 cells by Immunofluorescence, in the absence or presence of the immunising peptide



ab69650 at 1/50 dilution staining CYP2S1 in human lung carcinoma by Immunohistochemistry, Paraffin-embedded tissue, in the absence or presence of the immunising peptide.

Please note: All products are "FOR RESEARCH USE ONLY. NOT FOR USE IN DIAGNOSTIC PROCEDURES"

Our Abpromise to you: Quality guaranteed and expert technical support

- Replacement or refund for products not performing as stated on the datasheet
- Valid for 12 months from date of delivery
- Response to your inquiry within 24 hours
- We provide support in Chinese, English, French, German, Japanese and Spanish
- Extensive multi-media technical resources to help you
- We investigate all quality concerns to ensure our products perform to the highest standards

If the product does not perform as described on this datasheet, we will offer a refund or replacement. For full details of the Abpromise, please visit <https://www.abcam.co.jp/abpromise> or contact our technical team.

Terms and conditions

- Guarantee only valid for products bought direct from Abcam or one of our authorized distributors