


Anti-CYP26A1 antibody [EPR11841] ab172474

リコンビナント RabMAb[®]

★★★★★ **1 Abreviews** **3 References** **画像数 8**

製品の概要

製品名	Anti-CYP26A1 antibody [EPR11841]
製品の詳細	Rabbit monoclonal [EPR11841] to CYP26A1
由来種	Rabbit
アプリケーション	適用あり: WB, IHC-P 適用なし: Flow Cyt, ICC/IF or IP
種交差性	交差種: Human 交差が予測される動物種: Rat  非交差種: Mouse
免疫原	Recombinant fragment corresponding to Human CYP26A1 aa 250-450. Database link: O43174
ポジティブ・コントロール	Human placenta, fetal liver and fetal kidney tissue lysates; 293T and HepG2 cell lysates; Human liver and pancreas tissues.
特記事項	This product is a recombinant monoclonal antibody, which offers several advantages including: <ul style="list-style-type: none">- High batch-to-batch consistency and reproducibility- Improved sensitivity and specificity- Long-term security of supply- Animal-free production For more information see here . Our RabMAb [®] technology is a patented hybridoma-based technology for making rabbit monoclonal antibodies. For details on our patents, please refer to RabMAb[®] patents .

製品の特性

製品の状態	Liquid
保存方法	Shipped at 4°C. Store at +4°C short term (1-2 weeks). Upon delivery aliquot. Store at -20°C long term. Avoid freeze / thaw cycle.
バッファー	pH: 7.20 Preservative: 0.01% Sodium azide Constituents: 9% PBS, 40% Glycerol (glycerin, glycerine), 0.05% BSA, 50% Tissue culture supernatant
精製度	Tissue culture supernatant

ポリ/モノ	モノクローナル
クローン名	EPR11841
アイソタイプ	IgG

アプリケーション

The Abpromise guarantee **Abpromise保証は、次のテスト済みアプリケーションにおけるab172474の使用に適用されます**
 アプリケーションノートには、推奨の開始希釈率がありますが、適切な希釈率につきましてはご検討ください。

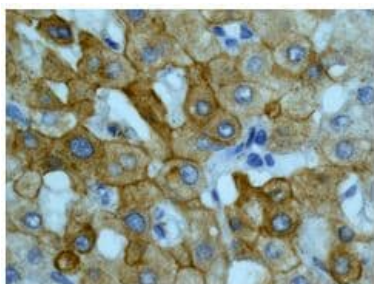
アプリケーション	Abreviews	特記事項
WB	★☆☆☆☆ (1)	1/1000 - 1/10000. Predicted molecular weight: 56 kDa.
IHC-P		1/250 - 1/500. Perform heat mediated antigen retrieval with citrate buffer pH 6 before commencing with IHC staining protocol.

追加情報 Is unsuitable for Flow Cyt, ICC/IF or IP.

ターゲット情報

機能	Plays a key role in retinoic acid metabolism. Acts on retinoids, including all-trans-retinoic acid (RA) and its stereoisomer 9-cis-RA. Capable of both 4-hydroxylation and 18-hydroxylation. Responsible for generation of several hydroxylated forms of RA, including 4-OH-RA, 4-oxo-RA and 18-OH-RA.
組織特異性	Highest levels in adult liver, heart, pituitary gland, adrenal gland, placenta and regions of the brain.
配列類似性	Belongs to the cytochrome P450 family.
細胞内局在	Endoplasmic reticulum membrane. Microsome membrane.

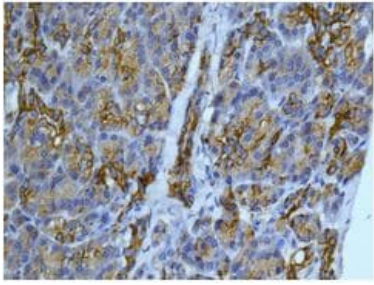
画像



Immunohistochemical analysis of paraffin embedded Human liver tissue labeling CYP26A1 with ab172474 at 1/250 dilution.

Perform heat mediated antigen retrieval with citrate buffer pH 6 before commencing with IHC staining protocol.

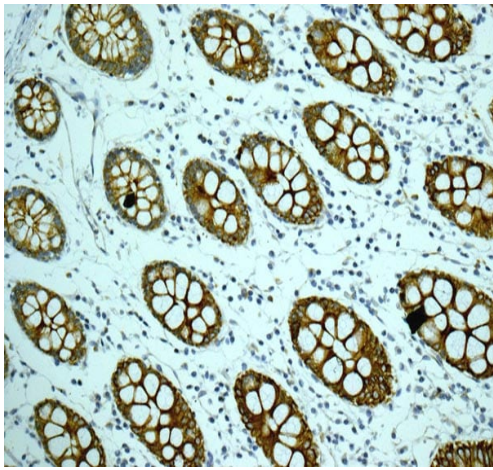
Immunohistochemistry (Formalin/PFA-fixed paraffin-embedded sections) - Anti-CYP26A1 antibody [EPR11841] (ab172474)



Immunohistochemistry (Formalin/PFA-fixed paraffin-embedded sections) - Anti-CYP26A1 antibody [EPR11841] (ab172474)

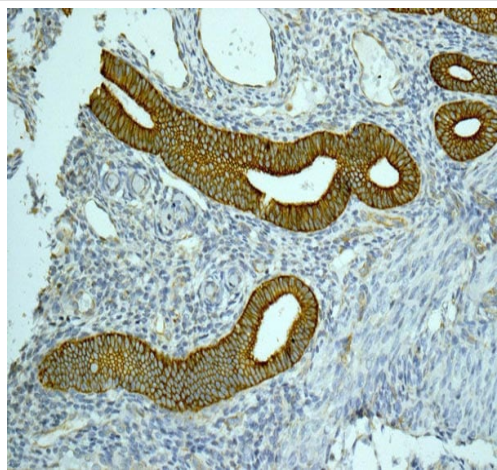
Immunohistochemical analysis of paraffin embedded Human pancreas tissue labeling CYP26A1 with ab172474 at 1/250 dilution.

Perform heat mediated antigen retrieval with citrate buffer pH 6 before commencing with IHC staining protocol.



Immunohistochemistry (Formalin/PFA-fixed paraffin-embedded sections) - Anti-CYP26A1 antibody [EPR11841] (ab172474)

ab172474 showing +ve staining in Human normal colon tissue. Perform heat mediated antigen retrieval with citrate buffer pH 6 before commencing with IHC staining protocol.



Immunohistochemistry (Formalin/PFA-fixed paraffin-embedded sections) - Anti-CYP26A1 antibody [EPR11841] (ab172474)

ab172474 showing +ve staining in Human normal uterus tissue.

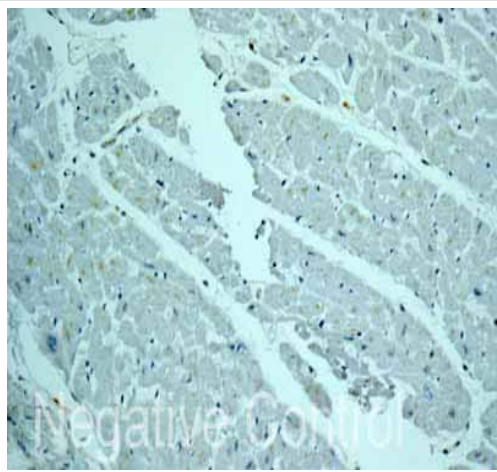
Perform heat mediated antigen retrieval with citrate buffer pH 6 before commencing with IHC staining protocol.



Immunohistochemistry (Formalin/PFA-fixed paraffin-embedded sections) - Anti-CYP26A1 antibody [EPR11841] (ab172474)

ab172474 showing -ve staining in Human skeletal muscle tissue.

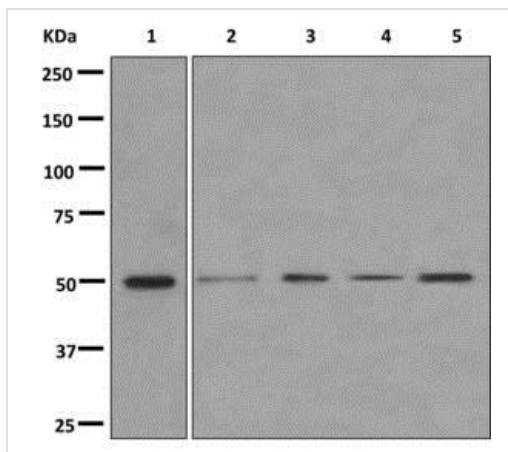
Perform heat mediated antigen retrieval with citrate buffer pH 6 before commencing with IHC staining protocol.



Immunohistochemistry (Formalin/PFA-fixed paraffin-embedded sections) - Anti-CYP26A1 antibody [EPR11841] (ab172474)

ab172474 showing -ve staining in Human heart muscle tissue.

Perform heat mediated antigen retrieval with citrate buffer pH 6 before commencing with IHC staining protocol.



Western blot - Anti-CYP26A1 antibody [EPR11841] (ab172474)

All lanes : Anti-CYP26A1 antibody [EPR11841] (ab172474) at 1/1000 dilution

Lane 1 : Human placenta tissue lysate

Lane 2 : Human fetal liver tissue lysate

Lane 3 : Human fetal kidney tissue lysate

Lane 4 : 293T (Human embryonic kidney epithelial cell) cell lysate

Lane 5 : HepG2 cell lysate

Lysates/proteins at 10 µg per lane.

Predicted band size: 56 kDa

Why choose a recombinant antibody?

Research with confidence
Consistent and reproducible results

Long-term and scalable supply
Recombinant technology

Success from the first experiment
Confirmed specificity

Ethical standards compliant
Animal-free production

Anti-CYP26A1 antibody [EPR11841] (ab172474)

Please note: All products are "FOR RESEARCH USE ONLY. NOT FOR USE IN DIAGNOSTIC PROCEDURES"

Our Abpromise to you: Quality guaranteed and expert technical support

- Replacement or refund for products not performing as stated on the datasheet
- Valid for 12 months from date of delivery
- Response to your inquiry within 24 hours

- We provide support in Chinese, English, French, German, Japanese and Spanish
- Extensive multi-media technical resources to help you
- We investigate all quality concerns to ensure our products perform to the highest standards

If the product does not perform as described on this datasheet, we will offer a refund or replacement. For full details of the Abpromise, please visit <https://www.abcam.co.jp/abpromise> or contact our technical team.

Terms and conditions

- Guarantee only valid for products bought direct from Abcam or one of our authorized distributors