




Anti-CYLD antibody ab60266

1 References [画像数 1](#)

製品の概要

製品名	Anti-CYLD antibody
製品の詳細	Goat polyclonal to CYLD
由来種	Goat
アプリケーション	適用あり: WB
種交差性	交差種: Rat 交差が予測される動物種: Horse, Cow, Dog, Human, Chimpanzee, Orangutan 
免疫原	Synthetic peptide: C-DSQQSKSKNPWYIDE , corresponding to internal sequence amino acids 361-375 of Mouse CYLD <div>  Run BLAST with  Run BLAST with </div>
ポジティブ・コントロール	PC: Rat Brain lysate.
特記事項	<p>The Life Science industry has been in the grips of a reproducibility crisis for a number of years. Abcam is leading the way in addressing this with our range of recombinant monoclonal antibodies and knockout edited cell lines for gold-standard validation. Please check that this product meets your needs before purchasing.</p> <p>If you have any questions, special requirements or concerns, please send us an inquiry and/or contact our Support team ahead of purchase. Recommended alternatives for this product can be found below, along with publications, customer reviews and Q&As</p>

製品の特性

製品の状態	Liquid
保存方法	Shipped at 4°C. Upon delivery aliquot and store at -20°C. Avoid freeze / thaw cycles.
バッファー	pH: 7.30 Preservative: 0.02% Sodium azide Constituents: Tris buffered saline, 0.5% BSA
精製度	Immunogen affinity purified
特記事項 (精製)	Purified from goat serum by ammonium sulphate precipitation followed by antigen affinity chromatography using the immunizing peptide.
ポリ/モノ	ポリクローナル

アプリケーション

The Abpromise guarantee Abpromise保証は、次のテスト済みアプリケーションにおけるab60266の使用に適用されます
 アプリケーションノートには、推奨の開始希釈率がありますが、適切な希釈率につきましてはご確認ください。

アプリケーション	Abreviews	特記事項
WB		

追加情報

Peptide ELISA: antibody detection limit dilution 1/32000.
 WB: Use at a concentration of 0.5 - 1.5 µg/ml. Detects a band of approximately 120 kDa (predicted molecular weight: 107 kDa).
 Not yet tested in other applications.
 Optimal dilutions/concentrations should be determined by the end user.

ターゲット情報

機能

Protease that specifically cleaves 'Lys-63'-linked polyubiquitin chains. Has endodeubiquitinase activity. Plays an important role in the regulation of pathways leading to NF-kappa-B activation. Contributes to the regulation of cell survival, proliferation and differentiation via its effects on NF-kappa-B activation. Negative regulator of Wnt signaling. Inhibits HDAC6 and thereby promotes acetylation of alpha-tubulin and stabilization of microtubules. Plays a role in the regulation of microtubule dynamics, and thereby contributes to the regulation of cell proliferation, cell polarization, cell migration, and angiogenesis. Required for normal cell cycle progress and normal cytokinesis. Inhibits nuclear translocation of NF-kappa-B. Plays a role in the regulation of inflammation and the innate immune response, via its effects on NF-kappa-B activation. Dispensable for the maturation of intrathymic natural killer cells, but required for the continued survival of immature natural killer cells. Negatively regulates TNFRSF11A signaling and osteoclastogenesis.

組織特異性

Detected in fetal brain, testis, and skeletal muscle, and at a lower level in adult brain, leukocytes, liver, heart, kidney, spleen, ovary and lung. Isoform 2 is found in all tissues except kidney.

関連疾患

Defects in CYLD are the cause of familial cylindromatosis (FCYL) [MIM:132700]; also known as Ansell-Spiegler cylindromas or turban tumor syndrome or dermal eccrine cylindromatosis. CYLD is an autosomal dominant and highly tumor type-specific disorder. The tumors (known as cylindromas because of their characteristic microscopic architecture) are believed to arise from or recapitulate the appearance of the eccrine or apocrine cells of the skin that secrete sweat and scent respectively. Cylindromas arise predominantly in hairy parts of the body with approximately 90% on the head and neck. The development of a confluent mass which may ulcerate or become infected has led to the designation 'turban tumor syndrome'. The skin tumors show differentiation in the direction of hair structures, hence the synonym trichoepithelioma.
 Defects in CYLD are the cause of multiple familial trichoepithelioma type 1 (MFT1) [MIM:601606]; also known as epithelioma adenoides cysticum of Brooke (EAC) or hereditary multiple benign cystic epithelioma or Brooke-Fordyce trichoepitheliomas. MFT1 is an autosomal dominant dermatosis characterized by the presence of many skin tumors predominantly on the face. Since histologic examination shows dermal aggregates of basaloid cells with connection to or differentiation toward hair follicles, this disorder has been thought to represent a benign

hamartoma of the pilosebaceous apparatus. Trichoepitheliomas can degenerate into basal cell carcinoma.

Defects in CYLD are the cause of Brooke-Spiegler syndrome (BRSS) [MIM:605041]. BRSS is an autosomal dominant disorder characterized by the appearance of multiple skin appendage tumors such as cylindroma, trichoepithelioma, and spiradenoma. These tumors are typically located in the head and neck region, appear in early adulthood, and gradually increase in size and number throughout life.

配列類似性

Belongs to the peptidase C67 family.

Contains 3 CAP-Gly domains.

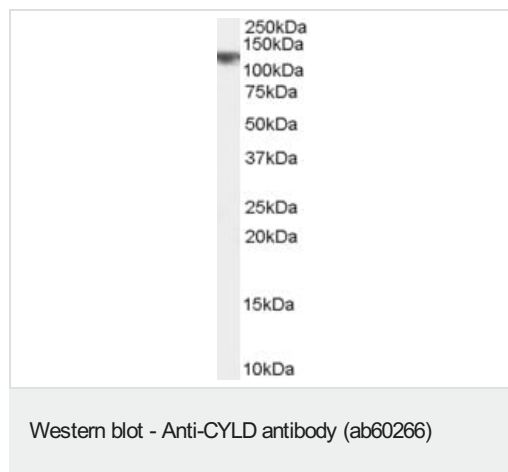
翻訳後修飾

Phosphorylated on several serine residues by IKKA and/or IKKB in response to immune stimuli. Phosphorylation requires IKBKG. Phosphorylation abolishes TRAF2 deubiquitination, interferes with the activation of Jun kinases, and strongly reduces CD40-dependent gene activation by NF-kappa-B.

細胞内局在

Cytoplasm. Cytoplasm > perinuclear region. Cytoplasm > cytoskeleton. Cell membrane. Detected at the microtubule cytoskeleton during interphase. Detected at the midbody during telophase.

画像



Anti-CYLD antibody (ab60266) at 0.5 µg/ml + Rat brain lysate at 35 µg

Predicted band size: 107 kDa

Observed band size: 120 kDa

Primary incubation was 1 hour. Detected by chemiluminescence. RIPA buffer used.

Please note: All products are "FOR RESEARCH USE ONLY. NOT FOR USE IN DIAGNOSTIC PROCEDURES"

Our Abpromise to you: Quality guaranteed and expert technical support

- Replacement or refund for products not performing as stated on the datasheet
- Valid for 12 months from date of delivery
- Response to your inquiry within 24 hours
- We provide support in Chinese, English, French, German, Japanese and Spanish
- Extensive multi-media technical resources to help you
- We investigate all quality concerns to ensure our products perform to the highest standards

If the product does not perform as described on this datasheet, we will offer a refund or replacement. For full details of the Abpromise, please visit <https://www.abcam.co.jp/abpromise> or contact our technical team.

Terms and conditions

- Guarantee only valid for products bought direct from Abcam or one of our authorized distributors