

Anti-CYFIP1 antibody ab108220

2 References [画像数 2](#)

製品の概要

製品名	Anti-CYFIP1 antibody
製品の詳細	Rabbit polyclonal to CYFIP1
由来種	Rabbit
アプリケーション	適用あり: WB, IP
種交差性	交差種: Human 交差が予測される動物種: Chimpanzee, Lizard, Rhesus monkey, Gorilla, Orangutan 
免疫原	Synthetic peptide corresponding to a region between residue 1203 and 1253 of Human CYFIP1 (NP_055423.1).
ポジティブ・コントロール	HeLa and 293T whole cell lysates
特記事項	<p>The Life Science industry has been in the grips of a reproducibility crisis for a number of years. Abcam is leading the way in addressing this with our range of recombinant monoclonal antibodies and knockout edited cell lines for gold-standard validation. Please check that this product meets your needs before purchasing.</p> <p>If you have any questions, special requirements or concerns, please send us an inquiry and/or contact our Support team ahead of purchase. Recommended alternatives for this product can be found below, along with publications, customer reviews and Q&As</p>

製品の特性

製品の状態	Liquid
保存方法	Shipped at 4°C. Upon delivery aliquot and store at -20°C. Avoid freeze / thaw cycles.
バッファー	pH: 7 Preservative: 0.09% Sodium azide Constituent: Tris citrate/phosphate
精製度	Immunogen affinity purified
特記事項(精製)	ab108220 was affinity purified using an epitope specific to CYFIP1 immobilized on solid support.
ポリモノ	ポリクローナル
アイソタイプ	IgG

The Abpromise guarantee **Abpromise保証は、** 次のテスト済みアプリケーションにおけるab108220の使用に適用されます
 アプリケーションノートには、推奨の開始希釈率がありますが、適切な希釈率につきましてはご検討ください。

アプリケーション	Abreviews	特記事項
WB		1/1000 - 1/5000. Predicted molecular weight: 145 kDa.
IP		Use at 2-5 µg/mg of lysate.

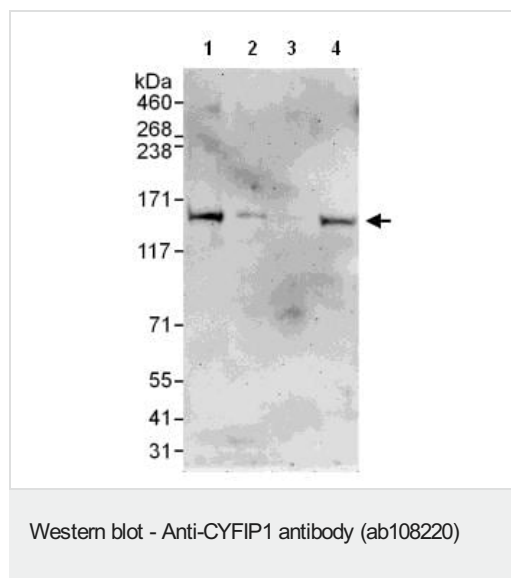
ターゲット情報

機能 Component of the CYFIP1-EIF4E-FMR1 complex which binds to the mRNA cap and mediates translational repression. In the CYFIP1-EIF4E-FMR1 complex this subunit is an adapter between EIF4E and FMR1. Promotes the translation repression activity of FMR1 in brain probably by mediating its association with EIF4E and mRNA (By similarity). Involved in formation of membrane ruffles and lamellipodia protrusions and in axon outgrowth. Binds to F-actin but not to RNA. Regulator of epithelial morphogenesis. May act as an invasion suppressor in cancers.

配列類似性 Belongs to the CYFIP family.

細胞内局在 Cytoplasm > perinuclear region. Cell projection > lamellipodium. Cell projection > ruffle. Cell junction > synapse > synaptosome. Highly expressed in the perinuclear region. Enriched in synaptosomes, membrane ruffles and at the tips of lamellipodia.

画像



All lanes : Anti-CYFIP1 antibody (ab108220) at 0.4 µg/ml

Lane 1 : HeLa whole cell lysate

at 50 µg

Lane 2 : HeLa whole cell lysate

at 15 µg

Lane 3 : HeLa whole cell lysate

at 5 µg

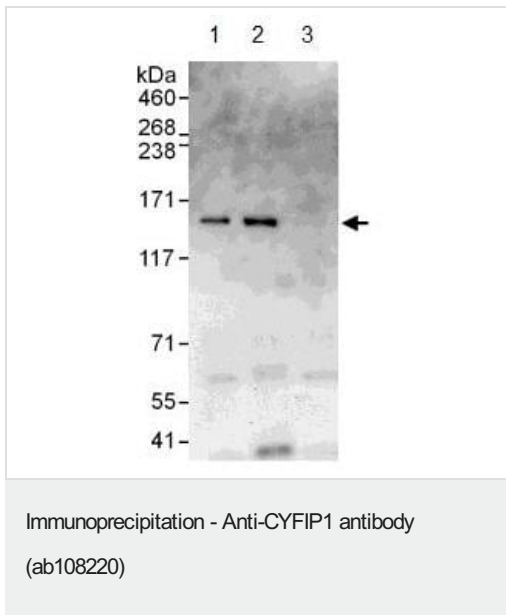
Lane 4 : 293T whole cell lysate

at 50 µg

Developed using the ECL technique.

Predicted band size: 145 kDa

Exposure time: 3 minutes



ab108220 at 1 $\mu\text{g/ml}$ detecting CYFIP1 in HeLa whole cell lysate by WB following IP.

Lane 1: IP with an antibody which recognizes an upstream epitope of CYFIP1

Lane 2: ab108220 at 6 $\mu\text{g/mg}$ of lysate

Lane 3: Control IgG.

In each case, 1 mg of lysate was used for IP and 20% of the IP was loaded.

Detection: Chemiluminescence with an exposure time of 30 seconds

Please note: All products are "FOR RESEARCH USE ONLY. NOT FOR USE IN DIAGNOSTIC PROCEDURES"

Our Abpromise to you: Quality guaranteed and expert technical support

- Replacement or refund for products not performing as stated on the datasheet
- Valid for 12 months from date of delivery
- Response to your inquiry within 24 hours
- We provide support in Chinese, English, French, German, Japanese and Spanish
- Extensive multi-media technical resources to help you
- We investigate all quality concerns to ensure our products perform to the highest standards

If the product does not perform as described on this datasheet, we will offer a refund or replacement. For full details of the Abpromise, please visit <https://www.abcam.co.jp/abpromise> or contact our technical team.

Terms and conditions

- Guarantee only valid for products bought direct from Abcam or one of our authorized distributors