

### Anti-Cyclophilin A antibody ab41684

★★★★★ [7 Abreviews](#) [53 References](#) [画像数 4](#)

#### 製品の概要

製品名	Anti-Cyclophilin A antibody
製品の詳細	Rabbit polyclonal to Cyclophilin A
由来種	Rabbit
特異性	Replenishment batches of our polyclonal antibody, ab41684 are tested in WB. Previous batches were additionally validated in ICC/IF. This application is still expected to work and is covered by our Abpromise guarantee. You may also be interested in our alternative recombinant antibody, <a href="#">ab126738</a> .
アプリケーション	<b>適用あり:</b> WB, ICC/IF
種交差性	<b>交差種:</b> Rat, Human <b>交差が予測される動物種:</b> Mouse, Cow, Dog, Pig, Monkey, Gorilla, Chinese hamster, Orangutan
免疫原	Synthetic peptide conjugated to KLH derived from within residues 100 to the C-terminus of Human Cyclophilin A. <b>Immunogen の所有権に関して</b> (Peptide available as <a href="#">ab42406</a> .)
特記事項	<p>The Life Science industry has been in the grips of a reproducibility crisis for a number of years. Abcam is leading the way in addressing this with our range of recombinant monoclonal antibodies and knockout edited cell lines for gold-standard validation. Please check that this product meets your needs before purchasing.</p> <p>If you have any questions, special requirements or concerns, please send us an inquiry and/or contact our Support team ahead of purchase. Recommended alternatives for this product can be found below, along with publications, customer reviews and Q&amp;As</p>

#### 製品の特性

製品の状態	Liquid
保存方法	Shipped at 4°C. Store at +4°C short term (1-2 weeks). Upon delivery aliquot. Store at -20°C or -80°C. Avoid freeze / thaw cycle.
バッファー	pH: 7.40 Preservative: 0.02% Sodium azide Constituent: PBS

Batches of this product that have a concentration < 1mg/ml may have BSA added as a stabilising agent. If you would like information about the formulation of a specific lot, please contact our

scientific support team who will be happy to help.

精製度

Immunogen affinity purified

ポリ/モノ

ポリクローナル

アイソタイプ

IgG

アプリケーション

The Abpromise guarantee

**Abpromise保証は、次のテスト済みアプリケーションにおけるab41684の使用に適用されます**

アプリケーションノートには、推奨の開始希釈率がありますが、適切な希釈率につきましてはご検討ください。

アプリケーション	Abreviews	特記事項
WB	★★★★★ (3)	Use a concentration of 1 µg/ml. Detects a band of approximately 18 kDa (predicted molecular weight: 18 kDa).
ICC/IF	★★★★★ (1)	Use a concentration of 1 µg/ml.

ターゲット情報

機能

PPlases accelerate the folding of proteins. It catalyzes the cis-trans isomerization of proline imidic peptide bonds in oligopeptides.

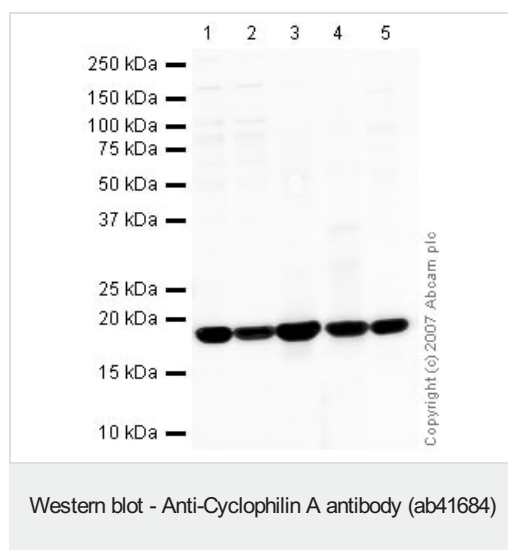
配列類似性

Belongs to the cyclophilin-type PPlase family. PPlase A subfamily.  
Contains 1 PPlase cyclophilin-type domain.

細胞内局在

Cytoplasm.

画像



**All lanes :** Anti-Cyclophilin A antibody (ab41684) at 1 µg/ml

**Lane 1 :** HeLa (Human epithelial carcinoma cell line) Whole Cell Lysate

**Lane 2 :** A431 (Human epithelial carcinoma cell line) Whole Cell Lysate

**Lane 3 :** Human lymph node tissue lysate - total protein (**ab29871**)

**Lane 4 :** Human thymus tissue lysate - total protein (**ab30146**)

**Lane 5 :** Lung (Rat) Tissue Lysate

Lysates/proteins at 10 µg per lane.

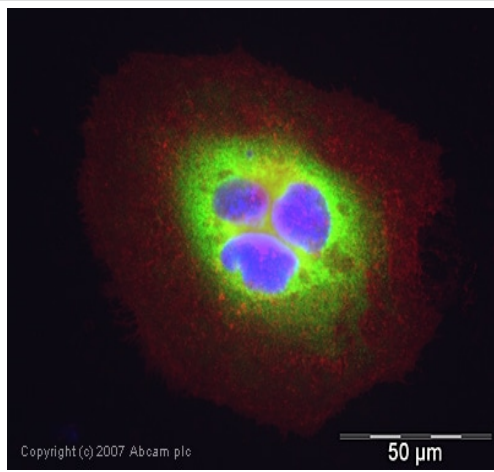
Secondary

**All lanes :** IRDye 680 Conjugated Goat Anti-Rabbit IgG (H+L) at 1/10000 dilution

Performed under reducing conditions.

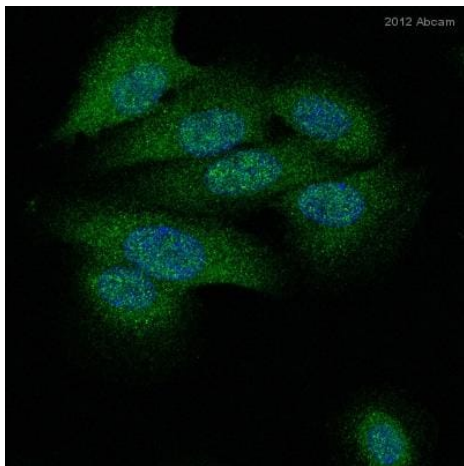
**Predicted band size:** 18 kDa

**Observed band size:** 18 kDa



Immunocytochemistry/ Immunofluorescence - Anti-Cyclophilin A antibody (ab41684)

ICC/IF image of ab41684 stained human HeLa cells. The cells were PFA fixed (10 min), permeabilised in TBS-T (20 min) and incubated with the antibody (ab41684, 1μg/ml) for 1h at room temperature. 1%BSA / 10% normal serum / 0.3M glycine was used to quench autofluorescence and block non-specific protein-protein interactions. The secondary antibody (green) was Alexa Fluor® 488 goat anti-rabbit IgG (H+L) used at a 1/1000 dilution for 1h. Alexa Fluor® 594 WGA was used to label plasma membranes (red). DAPI was used to stain the cell nuclei (blue).



Immunocytochemistry/ Immunofluorescence - Anti-Cyclophilin A antibody (ab41684)

This image is courtesy of an abreview submitted by Alina Macovei.

Immunocytochemistry/ Immunofluorescence analysis of HepaRG cells labeling Cyclophilin A with ab41684 at 1μg/ml. Cells were fixed with formaldehyde and permeabilized with 0.2% Triton X-100 in PBS. The cells were blocked with 1% milk for 20 minutes at room temperature. A polyclonal goat anti-rabbit Alexa Fluor 488 secondary antibody was used at 1/400 dilution.



Western blot - Anti-Cyclophilin A antibody (ab41684)

**ab88202** is a GST-tagged recombinant protein with an expected molecular weight of 50kDa.

**Please note:** All products are "FOR RESEARCH USE ONLY. NOT FOR USE IN DIAGNOSTIC PROCEDURES"

### Our Abpromise to you: Quality guaranteed and expert technical support

---

- Replacement or refund for products not performing as stated on the datasheet
- Valid for 12 months from date of delivery
- Response to your inquiry within 24 hours
- We provide support in Chinese, English, French, German, Japanese and Spanish
- Extensive multi-media technical resources to help you
- We investigate all quality concerns to ensure our products perform to the highest standards

If the product does not perform as described on this datasheet, we will offer a refund or replacement. For full details of the Abpromise, please visit <https://www.abcam.co.jp/abpromise> or contact our technical team.

### Terms and conditions

---

- Guarantee only valid for products bought direct from Abcam or one of our authorized distributors